



THE UNIVERSITY *of* EDINBURGH

Edinburgh Research Explorer

## Associations Between Systolic Interarm Differences in Blood Pressure and Cardiovascular Disease Outcomes and Mortality

### Citation for published version:

Clark, CE, Warren, FC, Boddy, K, McDonagh, STJ, Moore, SF, Goddard, J, Reed, N, Turner, M, Alzamora, MT, Ramos Blanes, R, Chuang, S-Y, Criqui, M, Dahl, M, Engström, G, Erbel, R, Espeland, M, Ferrucci, L, Guerchet, M, Hattersley, A, Lahoz, C, McClelland, RL, McDermott, MM, Price, J, Stoffers, HE, Wang, J-G, Westerink, J, White, J, Cloutier, L, Taylor, RS, Shore, AC, McManus, RJ, Aboyans, V & Campbell, JL 2021, 'Associations Between Systolic Interarm Differences in Blood Pressure and Cardiovascular Disease Outcomes and Mortality: Individual Participant Data Meta-Analysis, Development and Validation of a Prognostic Algorithm: The INTERPRESS-IPD Collaboration', *Hypertension*, vol. 77, no. 2, pp. HYPERTENSIONAHA12015997. <https://doi.org/10.1161/HYPERTENSIONAHA.120.15997>

### Digital Object Identifier (DOI):

[10.1161/HYPERTENSIONAHA.120.15997](https://doi.org/10.1161/HYPERTENSIONAHA.120.15997)

### Link:

[Link to publication record in Edinburgh Research Explorer](#)

### Document Version:

Publisher's PDF, also known as Version of record

### Published In:

Hypertension

### General rights

Copyright for the publications made accessible via the Edinburgh Research Explorer is retained by the author(s) and / or other copyright owners and it is a condition of accessing these publications that users recognise and abide by the legal requirements associated with these rights.

### Take down policy

The University of Edinburgh has made every reasonable effort to ensure that Edinburgh Research Explorer content complies with UK legislation. If you believe that the public display of this file breaches copyright please contact [openaccess@ed.ac.uk](mailto:openaccess@ed.ac.uk) providing details, and we will remove access to the work immediately and investigate your claim.





# Associations Between Systolic Interarm Differences in Blood Pressure and Cardiovascular Disease Outcomes and Mortality

## Individual Participant Data Meta-Analysis, Development and Validation of a Prognostic Algorithm: The INTERPRESS-IPD Collaboration

Christopher E. Clark<sup>1</sup>, Fiona C. Warren, Kate Boddy<sup>1</sup>, Sinead T.J. McDonagh<sup>1</sup>, Sarah F. Moore<sup>1</sup>, John Goddard<sup>1</sup>, Nigel Reed<sup>1</sup>, Malcolm Turner, Maria Teresa Alzamora, Rafel Ramos Blanes<sup>1</sup>, Shao-Yuan Chuang<sup>1</sup>, Michael Criqui, Marie Dahl<sup>1</sup>, Gunnar Engström, Raimund Erbel, Mark Espeland, Luigi Ferrucci, Maëlen Guerchet, Andrew Hattersley, Carlos Lahoz, Robyn L. McClelland, Mary M. McDermott<sup>1</sup>, Jackie Price, Henri E. Stoffers, Ji-Guang Wang, Jan Westerink, James White, Lyne Cloutier<sup>1</sup>, Rod S. Taylor<sup>1</sup>, Angela C. Shore, Richard J. McManus, Victor Aboyans, John L. Campbell

**ABSTRACT:** Systolic interarm differences in blood pressure have been associated with all-cause mortality and cardiovascular disease. We undertook individual participant data meta-analyses to (1) quantify independent associations of systolic interarm difference with mortality and cardiovascular events; (2) develop and validate prognostic models incorporating interarm difference, and (3) determine whether interarm difference remains associated with risk after adjustment for common cardiovascular risk scores. We searched for studies recording bilateral blood pressure and outcomes, established agreements with collaborating authors, and created a single international dataset: the Inter-arm Blood Pressure Difference - Individual Participant Data (INTERPRESS-IPD) Collaboration. Data were merged from 24 studies (53827 participants). Systolic interarm difference was associated with all-cause and cardiovascular mortality: continuous hazard ratios 1.05 (95% CI, 1.02–1.08) and 1.06 (95% CI, 1.02–1.11), respectively, per 5 mmHg systolic interarm difference. Hazard ratios for all-cause mortality increased with interarm difference magnitude from a  $\geq 5$  mmHg threshold (hazard ratio, 1.07 [95% CI, 1.01–1.14]). Systolic interarm differences per 5 mmHg were associated with cardiovascular events in people without preexisting disease, after adjustment for Atherosclerotic Cardiovascular Disease (hazard ratio, 1.04 [95% CI, 1.00–1.08]), Framingham (hazard ratio, 1.04 [95% CI, 1.01–1.08]), or QRISK cardiovascular disease risk algorithm version 2 (QRISK2) (hazard ratio, 1.12 [95% CI, 1.06–1.18]) cardiovascular risk scores. Our findings confirm that systolic interarm difference is associated with increased all-cause mortality, cardiovascular mortality, and cardiovascular events. Blood pressure should be measured in both arms during cardiovascular assessment. A systolic interarm difference of 10 mmHg is proposed as the upper limit of normal.

**REGISTRATION:** URL: [https://www.crd.york.ac.uk/prospero/display\\_record.php?ID=CRD42015031227](https://www.crd.york.ac.uk/prospero/display_record.php?ID=CRD42015031227) (**Hypertension. 2020;77:00-00. DOI: 10.1161/HYPERTENSIONAHA.120.15997.**) • **Data Supplement**

**Key Words:** blood pressure ■ cardiovascular disease ■ meta-analysis ■ mortality ■ risk

Cardiovascular disease is the leading cause of death worldwide, and hypertension is a major risk factor.<sup>1</sup> Benefits of hypertension treatment are greatest

for individuals with the highest estimated cardiovascular risk,<sup>2</sup> but the majority of events occur in individuals with low to medium cardiovascular risk scores, therefore,

Correspondence to: Christopher Clark, Primary Care Research Group, Institute of Health Services Research, University of Exeter Medical School, College of Medicine & Health, Smeall Bldg, St Luke's Campus, Magdalen Rd, Exeter, Devon, England EX1 2LU. Email [c.e.clark@exeter.ac.uk](mailto:c.e.clark@exeter.ac.uk)

This paper was sent to Suzanne Oparil, Consulting Editor, for review by expert referees, editorial decision, and final disposition.

The Data Supplement is available with this article at <https://www.ahajournals.org/doi/suppl/10.1161/HYPERTENSIONAHA.120.15997>.

For Sources of Funding and Disclosures, see page xxx.

© 2020 The Authors. *Hypertension* is published on behalf of the American Heart Association, Inc., by Wolters Kluwer Health, Inc. This is an open access article under the terms of the [Creative Commons Attribution](https://creativecommons.org/licenses/by/4.0/) License, which permits use, distribution, and reproduction in any medium, provided that the original work is properly cited.

*Hypertension* is available at [www.ahajournals.org/journal/hyp](http://www.ahajournals.org/journal/hyp)

## Novelty and Significance

### What Is New?

- To determine the impact of differences in blood pressure between arms on cardiovascular outcomes (eg, heart attack, death), data from over 57 000 individuals from 24 studies around the world were collated into one large dataset and analyzed.
- Results suggest that interarm differences above 5 mm of mercury (mm Hg) predict all-cause mortality, cardiovascular mortality and cardiovascular events.
- Results are based on a single pair of measurements with blood pressure measured in one arm and then the other, and challenge advice that interarm differences in blood pressure should be confirmed using a simultaneous method (blood pressure measured in both arms at the same time).

### What Is Relevant?

- Interarm differences in blood pressure identify additional risk of having a cardiovascular event beyond that predicted by existing cardiovascular risk scores alone; this could inform clinical decisions regarding primary prevention of cardiovascular disease.

### Summary

A 10 mmHg difference in systolic blood pressure between arms should now be regarded as an upper limit of normal. Checking blood pressure in both arms, beyond choosing which arm to measure for the detection and management of high blood pressure, is a key part of cardiovascular risk assessment and should become routine clinical practice.

## Nonstandard Abbreviation and Acronyms

<b>ASCVD</b>	Atherosclerotic Cardiovascular Disease
<b>BP</b>	blood pressure
<b>HDL</b>	high-density lipoprotein
<b>HR</b>	hazard ratio
<b>IAD</b>	interarm BP differences
<b>IPD</b>	individual participant data
<b>PRISMA-IPD</b>	Preferred Reporting Items for Systematic Reviews and Meta-Analyses of IPD
<b>QRISK2</b>	QRISK cardiovascular disease risk algorithm version 2
<b>SCORE</b>	Systematic Coronary Risk Evaluation

novel additional risk markers may help to identify individuals most likely to benefit from preventative measures.<sup>3</sup> Cardiovascular risk assessments generally take place in primary care settings,<sup>4</sup> so ideally risk markers should be easily measured, with low acquisition costs for practical implementation.<sup>5</sup>

Measurement of blood pressure (BP) in both arms is easily achieved. International hypertension guidelines recommend checking BP in both arms and subsequently monitoring BP on the higher reading arm.<sup>6-9</sup> Guidelines also acknowledge the association of systolic interarm BP differences (IAD) with cardiovascular risk.<sup>6,7</sup> Systolic IADs  $\geq 10$  mmHg arise in 11% of hypertensive people and in 4% of the general population.<sup>10</sup> Cross-sectional studies report higher prevalence of systolic IAD in the presence of diabetes and cardiovascular, cerebrovascular, or

peripheral arterial diseases.<sup>10-12</sup> IAD, after adjustment for BP, is associated with increased left ventricular mass,<sup>13</sup> greater arterial stiffness,<sup>13-15</sup> diabetic nephropathy,<sup>16,17</sup> and retinopathy.<sup>16</sup> Study-level meta-analyses have observed associations of IAD with cardiovascular and all-cause mortality and with increased cardiovascular event rates.<sup>12,18</sup> Independent risk has also been demonstrated for IAD after adjustment for Framingham risk scores.<sup>19-21</sup>

However, study-level meta-analyses are limited in their ability to draw conclusions since they combine studies with different patient characteristics, methodological choices, and analytical approaches. Such limitations can be minimized by using individual participant data (IPD).

We established the Inter-arm Blood Pressure Difference - Individual Participant Data (INTERPRESS-IPD) Collaboration to (1) to conduct the first international IPD meta-analysis to examine the independent association of systolic IAD with risk for cardiovascular events, all-cause mortality, and cardiovascular mortality; (2) develop and validate new cardiovascular risk prediction models that incorporate IAD; and (3) determine whether IAD predicts additional risk beyond existing cardiovascular risk scores.

## METHODS

Data-sharing agreements were signed with each collaborating study lead author, and an Independent Monitoring Group oversaw conduct. Under terms of the data-sharing agreements the INTERPRESS-IPD dataset is not freely available but can be discussed with the corresponding author on reasonable request. The study protocol is registered with the international prospective register of systematic reviews (PROSPERO) and has been published.<sup>22</sup> This study was conducted in accordance with the PRISMA-IPD (Preferred Reporting Items for Systematic Reviews and Meta-Analyses of IPD) statement.<sup>23</sup>

## Literature Search and Study Identification

Medline, Old Medline, Medline in process, Embase, and CINAHL were searched (Table S1 in the [Data Supplement](#)) for prospective studies reporting BP measurement in both arms. Unpublished data were sought from collaborators and the OpenGrey database. Searches were undertaken on April 19, 2016 with monthly updates until January 2017; dataset submission closed on April 7, 2017. Citations were screened in Covidence (Veritas Health Innovation, Melbourne, Australia) by 2 coauthors (S.F. Moore and S.T.J. McDonagh, L. Cloutier, C.E. Clark, J.L. Campbell, R.J. McManus, or A.C. Shore) independently; conflicts were resolved by discussion, with adjudication by C.E. Clark if unresolved.

Observational longitudinal studies or randomized controlled trials without BP lowering interventions, recording recruitment BP in both arms, were eligible. Inclusion criteria were participants aged  $\geq 18$  years, recruited from community, primary care, or general clinic settings. Primary outcomes were all-cause mortality, cardiovascular mortality, or fatal and nonfatal cardiovascular events. Selective cohorts such as vascular clinics were excluded. Participant and study-level characteristics known to relate to cardiovascular risk or BP and IAD measurement were sought. These included age, sex, ethnic group, body mass index, smoking status, total and HDL (high-density lipoprotein) cholesterol, and preexisting diagnoses of hypertension, diabetes, cardiovascular, renal and peripheral arterial diseases, cerebrovascular disease, and methods of BP measurement.

## Data Extraction and Preparation

Eligible study authors were invited to share data; nonresponders received 2 reminders. Anonymized data were securely transferred to the University of Exeter server and cleaned with reference to published data and author discussion, where necessary. Datasets were combined using Stata v14.0 (StataCorp, TX). For randomized controlled trials, we excluded interaction effects on outcomes between systolic IAD and treatment before including both trial arms in the IPD dataset. To overcome varying classifications of ethnicity, we mapped participants to the most commonly observed ethnic groups, seeking author and expert advice where required (Table S2). Two authors (S.T.J. McDonagh, L. Cloutier, or C.E. Clark) independently assessed study quality using a modified Quality Improvement in Prognostic Studies tool (Table S3).<sup>24</sup>

## Statistical Analysis

We defined IAD as absolute difference between the first pair of systolic arm BP readings. Where baseline BP was also measured separately to paired measurements during recruitment, we used this measurement in adjusted models. If only paired readings existed we adopted the higher reading arm BP.<sup>6,7</sup> For the inferential analyses and modeling, follow-up analysis times were truncated to 10 years. Cardiovascular events were defined as first occurrence of myocardial infarction, physician confirmed angina, coronary revascularisation, transient ischemic attack, or stroke. Preexisting cardiovascular disease was defined as a history of any one of these events, or of peripheral arterial disease, at baseline.

Time-to-event outcomes for all-cause mortality, cardiovascular mortality, and first fatal or nonfatal cardiovascular event were investigated using Cox proportional hazards models to derive hazard ratios (HR). Initial 2-stage IPD meta-analyses, modeling IAD for each study as both a continuous variable and serially

as dichotomous variables with 1 mmHg increments up to 20 mmHg,<sup>25</sup> were used to estimate heterogeneity. This was categorized according to  $I^2$  values as low ( $<25\%$ ) moderate ( $25\%–50\%$ ) or high ( $>50\%$ ).<sup>26</sup> All models were adjusted for baseline systolic BP, age, and sex.

One-stage random-effects flexible parametric models failed to converge (probably due to low between-study heterogeneity). Therefore, fixed-effect one-stage Cox proportional hazards modeling, stratified by study, was adopted, as per protocol.<sup>22</sup> For prognostic modeling, 4 cohorts (4264 participants) were reserved as a validation dataset. Validation cohorts were chosen nonrandomly to include participants of both sexes covering the full age range.<sup>27</sup> Two authors (F. Warren and C.E. Clark) independently chose 4 cohorts then agreed on the final selection by consensus (Figure S1).<sup>28–31</sup> One-stage Cox proportional hazards models, stratified by study, used the remaining cohorts (the derivation dataset) to investigate effects of participant-level covariates on outcomes with inclusion of IAD within the model. Baseline HDL cholesterol was missing for 7 studies, so was omitted as a candidate covariate in model development. Statistically significant covariates (threshold  $P < 0.1$ ) were entered into multivariable models and retained if  $P$  values were  $< 0.05$ . Excluded covariates were individually returned to check whether inclusion improved model fit, tested with likelihood ratio tests, and the Akaike Information Criterion.<sup>32</sup>

Final models were validated using calibration slopes and internal-external cross-validation analysis, with goodness of fit assessed using Harrell C statistic.<sup>33</sup> Kaplan-Meier curves for derivation and validation cohorts were compared using cutoffs approximating to 10-year mortality risks groups of  $< 10\%$ ,  $10\%$  to  $20\%$ , and  $> 20\%$ .

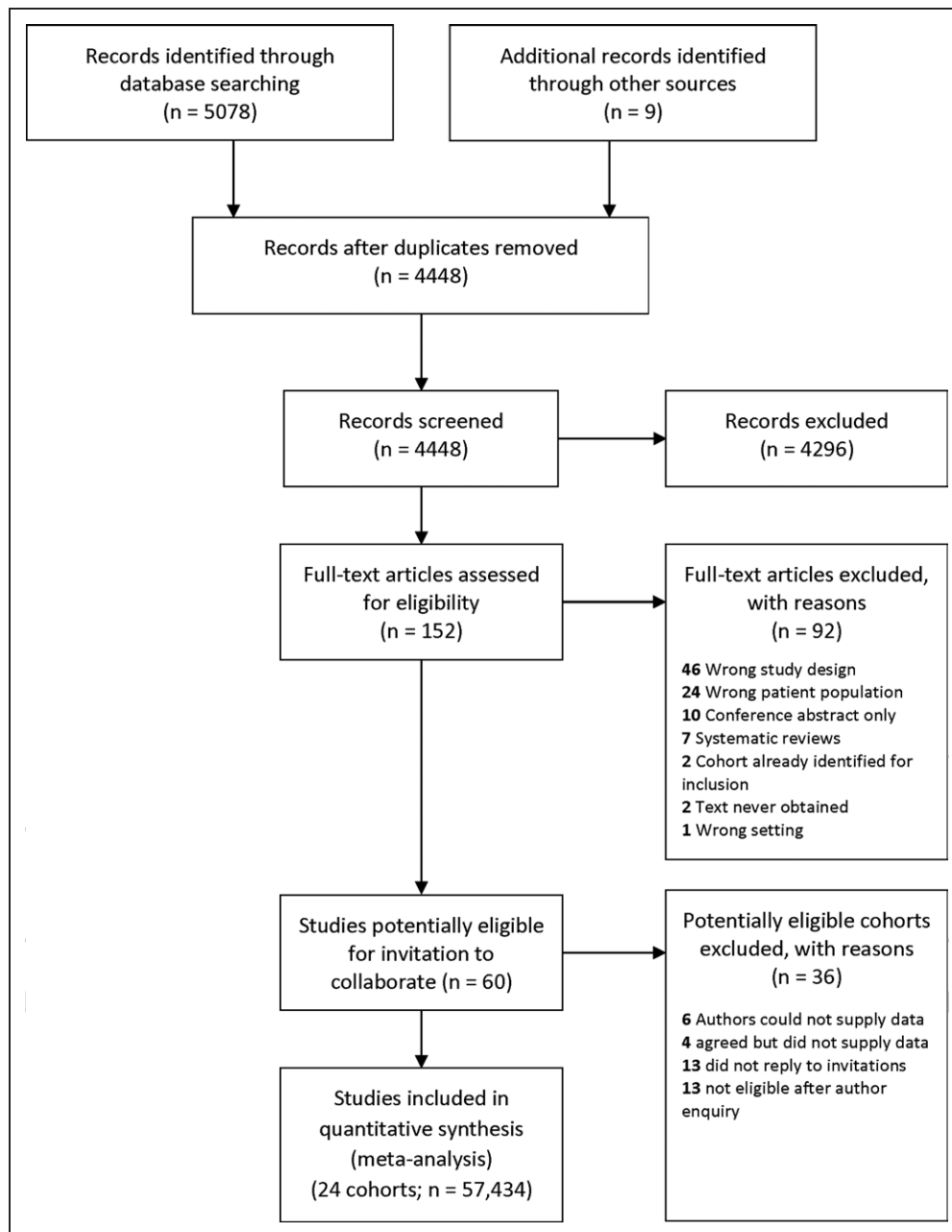
For participants without preexisting cardiovascular disease, systolic IAD was adjusted using Cox proportional hazards models stratified by study for 4 guideline-recommended cardiovascular risk scores: Atherosclerotic Cardiovascular Disease (ASCVD),<sup>9,34</sup> Framingham,<sup>8,35</sup> QRISK cardiovascular disease risk algorithm version 2 (QRISK2),<sup>6,36</sup> and the European Systematic Coronary Risk Evaluation score (SCORE).<sup>7,37</sup> Analyses were restricted to validated ethnicities and age ranges for each score (ASCVD: 40–79, Framingham: 20–79, QRISK2: 25–84, and SCORE: 40–65 years).<sup>34–37</sup>

Inclusion bias was assessed by comparing outcomes in the INTERPRESS-IPD dataset with published cohorts not in the Collaboration. Publication bias was assessed visually using a funnel plot and quantified with Egger test.<sup>38</sup>

Following multiple imputation of missing baseline data by chained equations, risk modeling was repeated and compared with models derived using observed data only; no missing outcome data were imputed. A total of 32 imputed datasets were produced, imputing baseline data across the pooled dataset, accounting for study in the imputation algorithm. A 3-person Public Advisory Group, facilitated by K. Boddy, was fully integrated throughout the study, contributing to bimonthly project meetings and facilitating dissemination of findings in accessible ways.

## RESULTS

Twenty-four studies contributed data to the Collaboration (Figure 1; Table S4); ten others were eligible but unable to supply data,<sup>21,39–47</sup> and a further 26 were ruled out after consultations with authors (Table S5).<sup>48–73</sup> Records for



**Figure 1. PRISMA flow chart for literature search.**

53 827 (93.7%) participants contained at least one pair of BP readings. Mean age was 60.3 (SD, 12.5; range, 18–102), 47.8% were female, and baseline BP was 138.3/80.9 (SD, 21.8/11.8) mmHg (Table S6). Studies originated from Western Europe (14), United States (7), East Asia (2), and Sub-Saharan Africa (1). Most participants were White (76%); other ethnicities were East Asian (8.6%), African American (6.0%), Hispanic American (3.8%) Black African (2.0%) with 0.8% unknown (coded as other; Table S2) and 2.8% missing. Studies recruited subjects from community or primary care registers (n=20),<sup>16,19,28–31,74–87</sup> study recruitment clinics (n=3),<sup>88–90</sup> and a Veterans' medical service (n=1).<sup>20</sup> Participants were free of cardiovascular disease in 3 cohorts,<sup>11,28,74</sup> had

diabetes in 2,<sup>16,87</sup> hypertension in 1<sup>19</sup> and were selected for intermediate vascular risk (10-year coronary event risk between 5 and 15%) in another.<sup>86</sup> Remaining cohorts were not selected according to cardiovascular risk factors (Table S4). Distribution of variables and outcomes by study is described in the Tables S7 through S9).

### Study quality and assessment of bias

Modified Quality Improvement in Prognostic Studies assessments judged 19 datasets to be at low risk of bias; 5 were unclear and none high (Table S10); Quality Improvement in Prognostic Studies judgments were non-discriminatory for outcomes. One published IAD study

was not included in the INTERPRESS-IPD dataset; heterogeneity between HRs for it and included studies was low ( $P=0\%$ ; Figure S1).<sup>21</sup> We found no evidence of publication bias (Egger  $P=0.657$ ; Figure S2).

## Time-to-Event Analyses and Model Development

### All-Cause Mortality

All-cause mortality was reported in 23 studies with 4939 (9.2%) deaths (Figure S3). Two-stage random-effects modeling in 50661 cases, adjusted for age, sex, and baseline systolic BP, identified that continuous IAD was significantly associated with time to all-cause mortality (HR, 1.04 [95% CI, 1.01–1.07] per 5 mmHg of absolute IAD; heterogeneity between studies was moderate ( $P=35\%$ ; Figure S4). Using 35901 participants from 19 cohorts with complete data for candidate covariates as the derivation dataset systolic, IAD was a significant predictor of mortality (HR, 1.05 [1.02–1.08] per 5 mmHg) with baseline systolic BP, age, sex, ethnicity, current smoking, total cholesterol, hypertensive, and diabetic status. Findings using all available data from those cohorts (40124 participants) were similar (HR, 1.05 [1.02–1.07] per 5 mmHg; Table 1). Harrell C statistic showed overlapping values between derivation (0.76 [95% CI, 0.75–0.77]) and validation (0.77 [95% CI, 0.75–0.80]) cohorts, with an overall pooled calibration slope on internal-external cross-validation of 0.97 (95% CI, 0.88–1.06; Figure S5).

Hazard curves for each risk group showed good overlap between derivation and validation cohorts and good separation between groups (Figure 2). Using the model described above and all available data, dichotomized IAD cutoffs at 1 mmHg increments indicated increasing hazards of all-cause mortality for an IAD rising from  $\geq 5$  mmHg (HR for IAD  $\geq 5$  mmHg: 1.07 [95% CI, 1.01–1.14];  $P=0\%$ ; 23 studies, 50661 participants; Figure 3).

After imputation of missing baseline covariates (HDL, 7 studies; body mass index, 1 study), IAD was no longer a significant predictor of all-cause mortality in the fully adjusted (IAD plus all covariates found to be statistically significant) model (Table S11).

### Cardiovascular Mortality

Cardiovascular deaths were reported for 1435 (3.0%) of 48261 participants from 21 studies (Figure S3). Continuous systolic IAD, adjusted for age, sex, and baseline systolic BP was significantly associated with cardiovascular mortality (HR, 1.07 [95% CI, 1.03–1.12];  $P=11\%$ ) per 5 mmHg of IAD (Figure S6). The derivation dataset for cardiovascular risk modeling consisted of 18 studies (33650 participants with complete case data). The final model included systolic IAD (HR, 1.06 [95% CI, 1.02–1.11] per 5 mmHg) and, apart from total cholesterol, the same coefficients as the all-cause mortality model (Table 2). Harrell C statistics were good and overlapped for the derivation (0.80 [95% CI, 0.79–0.82]) and validation (0.83 [95% CI, 0.79–0.87]) cohorts. Internal-external cross-validation gave a pooled calibration slope of 0.97 (95% CI, 0.83–1.10; Figure S7). Continuous systolic IAD remained a significant predictor of cardiovascular mortality after imputation of missing covariates (Table S12).

### Fatal and Nonfatal Cardiovascular Events

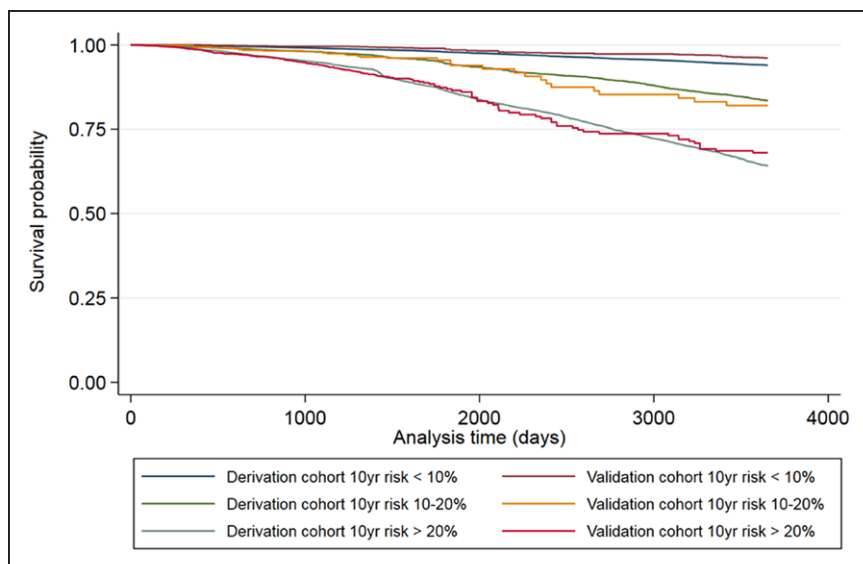
Of 51405 participants in 23 studies, 5800 (11.3%) had an event within 10 years. In the 2-stage random-effects model, continuous systolic IAD was associated with greater risk for any cardiovascular event after adjustment for age, sex, and baseline systolic BP (HR, 1.03 per 5 mmHg increment [95% CI, 1.00–1.06];  $P=25\%$ ; Figure S8). In the 1-stage fixed-effect model, continuous systolic IAD was not associated with risk of events (HR, 1.01 per 5 mmHg increment [95% CI, 0.99–1.03],  $P=0.174$ ); therefore, multivariable modeling was not pursued as per protocol. After

**Table 1. Results of One-Stage Meta-Analysis to Develop Overall Final Model for All-Cause Mortality**

Covariate	Development dataset, complete case data; 16 studies, 35901 participants		Development dataset, all available case data; 19 studies, 40124 participants	
	HR (95% CI)	P value	HR (95% CI)	P value
Systolic IAD per 5 mmHg	1.05 (1.02–1.08)	<0.001	1.05 (1.02–1.07)	<0.001
Baseline SBP per 10 mmHg	1.03 (1.01–1.05)	0.002	1.03 (1.01–1.04)	0.003
Age	1.11 (1.10–1.11)	<0.001	1.11 (1.10–1.11)	<0.001
Sex (reference: female)	1.63 (1.51–1.77)	<0.001	1.62 (1.51–1.74)	<0.001
Smoking status	1.89 (1.74–2.06)	<0.001	1.91 (1.77–2.06)	<0.001
Ethnic group* (reference: white)	African American: 1.27 (1.10–1.46)	Global: 0.038	African American: 1.27 (1.10–1.46)	Global: 0.042
	Hispanic-American: 0.94 (0.78–1.13)		Hispanic-American: 0.96 (0.80–1.15)	
	Other: 0.76 (0.62–0.94)		Other: 0.76 (0.62–0.94)	
Total cholesterol	0.94 (0.91–0.98)	<0.001	0.94 (0.91–0.97)	<0.001
Hypertension diagnosis	1.13 (1.03–1.23)	0.007	1.12 (1.03–1.22)	0.006
Diabetes diagnosis	1.49 (1.36–1.63)	<0.001	1.52 (1.39–1.66)	<0.001

HR indicates hazard ratios; and IAD, interarm blood pressure differences.

\*Black African and East Asian categories omitted from model.



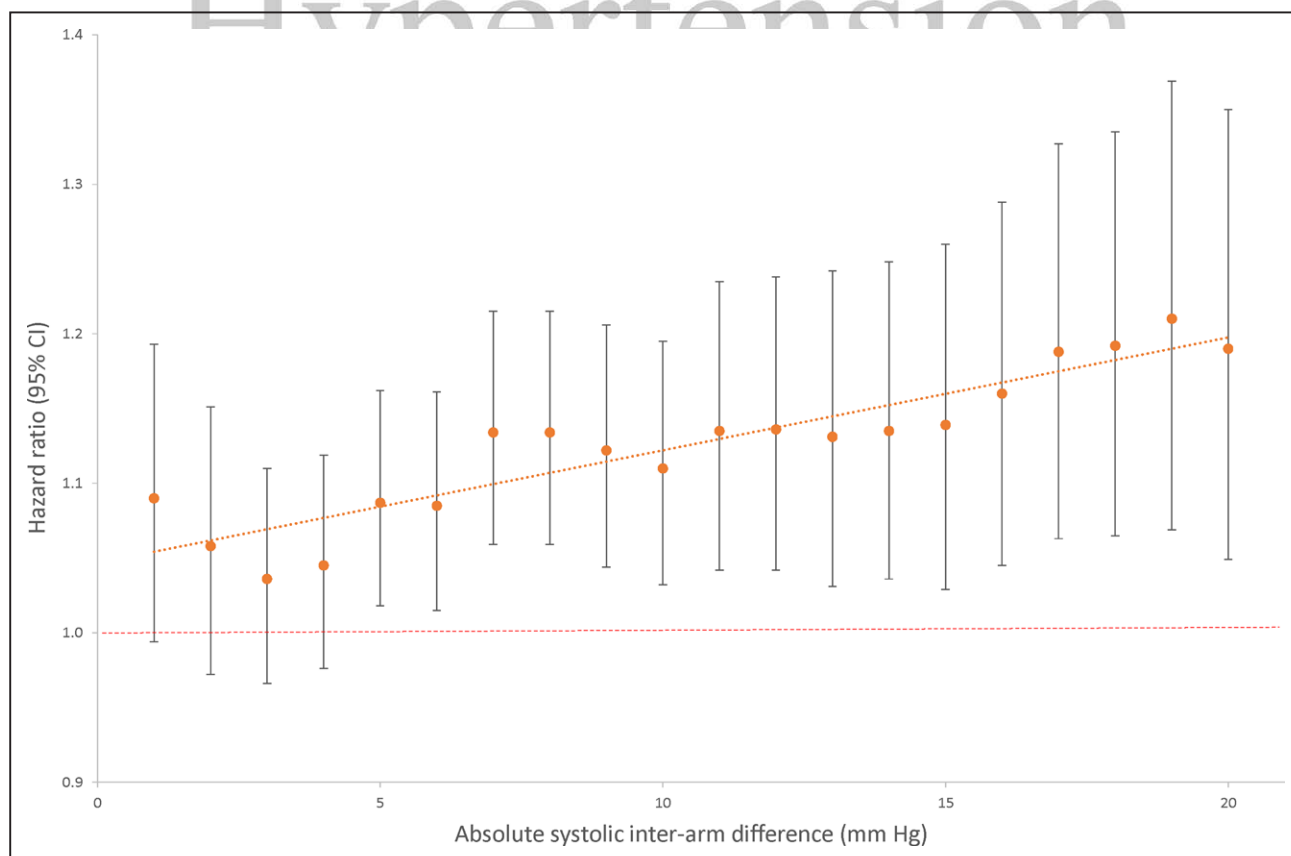
**Figure 2.** Kaplan-Meier plots comparing all-cause mortality for the derivation and validation cohorts for 3 risk groups corresponding to 10% and 20% 10-year risk thresholds.

imputation of missing data, however, systolic IAD became a significant predictor of outcome (Table S13).

### Interarm Difference and Existing Cardiovascular Risk Models

Systolic IADs remained significantly associated with fatal or nonfatal cardiovascular events over 10 years after

adjustment for the ASCVD, Framingham, or QRISK2 risk scores: residual HRs for an IAD  $\geq 10$  mmHg ranged from 1.2 to 1.4 (Table 3). As continuous variables, HRs per 5 mmHg increment of systolic IAD was 1.04 (95% CI, 1.01–1.08) when adjusted for the Framingham score, 1.04 (95% CI, 1.00–1.08) for ASCVD and 1.12 (95% CI, 1.06–1.18) for QRISK2, representing 4% to 12% increases in 10-year cardiovascular risk scores (Figure S9). After restricting analyses to a cohort eligible by age for



**Figure 3.** All-cause mortality hazard ratios for systolic interarm difference in fully adjusted model.

**Table 2. Results of One-Stage Meta-Analysis to Develop Overall Final Model for Cardiovascular Mortality**

Covariate	Development dataset, complete case data; 15 studies, 33650 participants		Development dataset, all available case data; 18 studies, 38908 participants	
	HR (95% CI)	P value	HR (95% CI)	P value
Systolic IAD per 5 mmHg	1.06 (1.02–1.11)	0.007	1.06 (1.02–1.10)	0.007
Baseline SBP per 10 mmHg	1.04 (1.01–1.08)	0.014	1.05 (1.02–1.08)	0.009
Age	1.13 (1.12–1.14)	<0.001	1.13 (1.12–1.13)	<0.001
Sex (reference: female)	1.65 (1.43–1.90)	<0.001	1.73 (1.53–1.97)	<0.001
Smoking status	1.66 (1.42–1.94)	<0.001	1.69 (1.47–1.95)	<0.001
Ethnic group* (reference: white)	African American: 1.45 (1.05–2.00)	0.257	African American: 1.48 (1.07–2.03)	0.452
	Hispanic American: 1.07 (0.7–1.61)		Hispanic American: 1.10 (0.73–1.64)	
	Other: 0.70 (0.44–1.11)		Other: 0.79 (0.52–1.22)	
Hypertension diagnosis	1.51 (1.26–1.80)	<0.001	1.45 (1.24–1.70)	<0.001
Diabetes diagnosis	1.87 (1.61–2.18)	<0.001	1.93 (1.67–2.23)	<0.001

HR indicates hazard ratios; IAD, interarm blood pressure differences; and SBP, systolic blood pressure.

\*Black African and East Asian categories omitted from model.

all 3 risk scores (40–79 years), variation in HRs between scores was minimized (Table 3). The HR of IAD for cardiovascular mortality, after adjustment for SCORE in 18239 participants was not statistically significant (HR, 1.07 per 5 mmHg increment [95% CI, 0.97–1.18];  $P=0.178$ ).

demonstrated that IAD remains associated with additional risk of cardiovascular events after adjustment for 3 currently used cardiovascular event risk prediction scores.

People with an IAD  $\geq 5$  mmHg had higher mortality rates than those with an IAD  $< 5$  mmHg. Each 1 mmHg increment in IAD was associated with approximately a 1% inflation of a given 10-year risk for all-cause mortality and a 1% to 2% inflation of 10-year risk of cardiovascular death. These prospective findings are based on a single pair of BP measurements, the most readily available means of measuring IAD, and so are of direct relevance to current clinical practice.

Previous studies have generally failed to observe a dose-response association of rising HRs for mortality with

## DISCUSSION

This is the first international IPD meta-analysis to report and model the risks of all-cause mortality, cardiovascular mortality, and fatal or nonfatal cardiovascular events associated with a systolic IAD. We have developed and validated multivariable risk models incorporating IAD to predict all-cause and cardiovascular mortality and

**Table 3. Hazard Ratios for First Cardiovascular Fatal and Nonfatal Events for Interarm Differences Adjusted for 10-Year Cardiovascular Risk Scores**

Risk score	Number (studies)	Mean 10-year risk score (SD)*	sIAD $\geq 10$ mmHg		Continuous sIAD per 5 mmHg	
			Hazard ratio (95%CI)	P value	Hazard ratio (95%CI)	P value
All complete case data within eligible age range for risk score analyzed						
QRISK2†	9641 (5)	17.2 (12.5)	1.37 (1.18–1.59)	<0.001	1.12 (1.06–1.18)	<0.001
ASCVD	19081 (15)	13.1 (12.7)	1.15 (1.03–1.28)	0.016	1.04 (1.00–1.08)	0.030
Framingham	23802 (15)	20.3 (15.8)	1.15 (1.03–1.28)	0.010	1.04 (1.01–1.08)	0.013
Sensitivity analysis—complete cases aged 40 to 79 only, eligible for all 3 risk score calculations						
QRISK2	7140 (5)	17.0 (11.6)	1.32 (1.12–1.58)	0.001	1.09 (1.03–1.16)	0.004
ASCVD	7140 (15)	16.1 (12.1)	1.31 (1.10–1.56)	0.002	1.09 (1.03–1.16)	0.004
Framingham	7140 (15)	22.0 (16.0)	1.32 (1.11–1.57)	0.002	1.10 (1.03–1.16)	0.003

ASCVD: risk algorithm (pooled cohort equation). ASCVD indicates Atherosclerotic Cardiovascular Disease; and sIAD, systolic interarm blood pressure difference.

\*10-year risk of fatal and nonfatal cardiovascular events.

†QRISK2 requires additional variables (atrial fibrillation, chronic kidney disease, and body mass index), hence lower numbers of complete cases and eligible cohorts.



increasing IADs, as now demonstrated after adjustment in this IPD analysis.<sup>12,18,74</sup> This supports the case for IAD as a marker of cardiovascular risk.<sup>91</sup> Our findings confirm the risk associated with IAD after adjusting for Framingham risk scores and, for the first time, also show this additional cardiovascular risk after adjustment for ASCVD or QRISK2 scores in patients without cardiovascular disease at baseline.<sup>19–21</sup> This suggests that the additional impact of IAD on risk should be considered when assessing cardiovascular risk using existing risk equations. This approach is consistent with guidelines to recognize additional individual cardiovascular risk factors that are not incorporated in risk scores.<sup>7</sup> IAD was not a significant predictor of cardiovascular mortality after adjustment for SCORE. Gradual improvements in secondary prevention mean fewer cardiovascular deaths now occur as a proportion of total events, rendering prediction of fatal events alone less clinically relevant. The cardiovascular death rate over 10 years in SCORE eligible participants in this study was only 192 out of 20 785 (0.9%) in comparison to 7934 out of 205 178 (3.9%) in the original SCORE derivation study.<sup>92</sup>

Current European and National Institute for Health and Care Excellence guidance note that a systolic IAD >15 mmHg is associated with additional cardiovascular risk.<sup>67</sup> Our findings confirm previous individual cohort study findings of risk arising for IADs from the lower threshold of  $\geq 5$  mmHg.<sup>20,74,89</sup> Sequential measurement of arms can overestimate magnitude of IADs compared with simultaneous measurement but also has a high negative predictive value in ruling out a simultaneous IAD.<sup>16,93</sup> Taking a conservative view of our findings, we think that a 10 mmHg difference can now be reasonably regarded as an upper limit of normal for systolic IAD measured sequentially during routine assessment. This information should be incorporated into future guidelines and clinical practice in assessing cardiovascular risk.

Guidelines advise checking BP in both arms when assessing people for hypertension but are widely ignored.<sup>6,7,94</sup> Failure to check both arms risks errors in BP interpretation and management and suboptimal BP control.<sup>95,96</sup> Uptake of bilateral arm BP measurement is increasing but has not yet become standard care.<sup>97</sup> Our findings show how IAD identifies additional cardiovascular risk beyond ASCVD, Framingham, or QRISK2 scores alone. This could inform decision-making with individuals about primary prevention of cardiovascular disease. These results are based on IAD derived from a single sequential pair of BP measurements, easily obtained in practice, and challenge advice that IAD should be confirmed using simultaneous measurement during clinical assessment.<sup>7</sup>

## Study Limitations

Comprehensive searches were undertaken for cohorts that reported either IAD or ankle-brachial index. Additional data were identified through author contacts.<sup>77,81,82,88,89</sup> In total,

we combined data from 24 of 34 confirmed eligible studies, representing two-thirds of potentially eligible participants, and comparison with the one published eligible IAD study that we did not obtain showed no evidence of inclusion bias. These IPD meta-analyses have required considerable data cleaning and preparation; closure of data inclusion in 2017 means that we could have excluded relevant recent publications, however, continued search updates to April 2020 have only identified one new potentially eligible study.<sup>98</sup> Our search strategy could have missed cohorts or registries holding bilateral BP data if no linked IAD or ankle-brachial index publications exist. We did not search specifically for pulse-wave velocity studies but are aware that recent technology for measuring this can generate bilateral BP data.<sup>99</sup>

We derived and validated risk models for all-cause and cardiovascular mortality, which, in addition to IAD, included risk markers congruent with previously published risk models.<sup>100</sup> Participants were largely based not only in North America and low risk (according to SCORE definition) European countries<sup>37</sup> but also included Asia and sub-Saharan Africa, thus offering relevance to a range of populations. Since residual confounding with existing risk scores may make it easier to show that a new marker improves prediction, we regard our de novo derived risk models as key demonstrations of the contribution of IAD to risk prediction.<sup>101</sup> The amount of missing data varied widely across studies and across variables. Sensitivity analyses incorporating multiple imputation of missing data were carried out on the assumption that missing data are missing at random. Some discrepancies between results of models using observed data alone and models using observed and imputed data were noted, suggesting that the missing at random assumption may not be valid; however, we emphasize that the models using observed data only were our primary outcomes.

No intervention studies based on detection of an IAD exist, and it is vital that novel risk markers are fully evaluated.<sup>102</sup> In general, there is a paucity of evidence that interventions based on cardiovascular risk result in reductions in mortality.<sup>103</sup> This study has incorporated IAD into multivariable risk models but these will need prospective evaluation.

## Conclusions

This study demonstrates and quantifies the independent association of IAD with cardiovascular events and mortality. Findings based on a single pair of sequential BP readings suggest a reduction of the currently accepted normal systolic IAD to a limit of 10 mmHg can be justified. These findings are relevant to primary care practice and to low resource settings. BP should be measured in both arms when undertaking cardiovascular assessments.

## Perspectives

Associations of sequentially measured systolic interarm differences in BP with all-cause mortality, cardiovascular

mortality, and events were investigated in a multinational individual participant data meta-analyses including 53 827 participants. Adjusted associations of IAD with all-cause mortality and cardiovascular mortality were confirmed, and models incorporating IAD were developed and validated. Interarm differences were also associated with higher risks of cardiovascular events after adjustment for commonly used cardiovascular risk scores. BP should be measured in both arms during cardiovascular assessment. Further research is needed to determine whether selection of intensive cardiovascular risk reduction strategies, on the basis of a detected interarm difference, can modify outcomes for people with an interarm difference.

## ARTICLE INFORMATION

Received July 16, 2020; accepted November 10, 2020.

### Affiliations

From the Primary Care Research Group, Institute of Health Services Research (C.E.C., F.C.W., S.T.J.M., S.F.M., R.S.T., J.L.C.), Patient and Public Involvement Team, PenCLAHRC (K.B., J.G., N.R., M.T.); Institute of Biomedical and Clinical Science (A.H.), University of Exeter Medical School, College of Medicine & Health, Devon, England; Unitat de Suport a la Recerca Metropolitana Nord, Fundació Institut Universitari per a la recerca a l'Atenció Primària de Salut Jordi Gol i Gurina (IDIAPJGo), Mataró, Spain (M.T.A.); Unitat de Suport a la Recerca Girona, Fundació Institut Universitari per a la recerca a l'Atenció Primària de Salut Jordi Gol i Gurina (IDIAPJGo), Institut d'Investigació Biomèdica de Girona (IdIBGi), Department of Medical Sciences, School of Medicine, University of Girona, Spain (R.R.B.); Institute of Population Health Sciences, National Health Research Institutes (NHRI), Taiwan, R.O.C (S.-Y.C.); Department of Family Medicine and Public Health, University of California, San Diego, School of Medicine, La Jolla (M.C.); Vascular Research Unit, Department of Vascular Surgery, Viborg Regional Hospital, Heibergs Allé 4, 8800 Viborg, Denmark (M.D.); Department of Clinical Medicine, Aarhus University, Denmark (M.D.); Department of Clinical Science in Malmö, Lund University, Sweden (G.E.); Institute of Medical Informatics, Biometry and Epidemiology, University Hospital Essen, Germany (R.E.); Wake Forest School of Medicine, NC (M.E.); National Institute on Aging, Baltimore MD (L.F.); INSERM U1094 & IRD, Tropical Neuroepidemiology, Institut d'Epidémiologie et de Neurologie Tropicale (IENT), Faculté de Médecine de l'Université de Limoges, Limoges Cedex, France (M.G., V.A.); Lipid and Vascular Risk Unit, Internal Medicine Service, Carlos III, La Paz Hospital, Madrid, Spain (C.L.); Department of Biostatistics, University of Washington, WA (R.L.M.); Northwestern University Feinberg School of Medicine, Chicago, IL (M.M.M.); Usher Institute of Population Health Sciences and Informatics, University of Edinburgh, Scotland (J.P.); Department of Family Medicine, CAPHRI Care and Public Health Research Institute, Maastricht University, the Netherlands (H.E.S.); Centre for Epidemiological Studies and Clinical Trials, Shanghai Key Laboratory of Hypertension, The Shanghai Institute of Hypertension, Ruijin Hospital, Shanghai Jiaotong University School of Medicine, China (J.-G.W.); Department of Vascular Medicine, University Medical Center Utrecht, the Netherlands (J. Westerink); DECIPHER, Centre for Trials Research, College of Biomedical and Life Sciences, Cardiff University, Wales (J. White); Département des Sciences Infirmières, Université du Québec à Trois-Rivières, Canada (L.C.); MRC/CSO Social and Public Health Sciences Unit & Robertson Centre for Biostatistics, Institute of Health and Well Being, University of Glasgow, Scotland (R.S.T.); NIHR Exeter Clinical Research Facility, Royal Devon and Exeter Hospital and University of Exeter College of Medicine & Health, England (A.C.S.); Nuffield Department of Primary Care Health Sciences, University of Oxford, England (R.J.M.); and Department of Cardiology, Dupuytren University Hospital, and Inserm 1094, Tropical Neuroepidemiology, Limoges, France (V.A.).

### Acknowledgments

We thank the following for their involvement in the Inter-arm Blood Pressure Difference - Individual Participant Data (INTERPRESS-IPD) Collaboration: Independent Monitoring Group: Alun Hughes (chair), Gary Collins, and Tom Fahey. Data management Group: Tim Eames and Sofia Sanabria (Exeter Clinical Trials Unit). Public Advisory Group: J. Goddard, M. Turner, and N. Reed. Ellie Kingsland provided administrative support throughout the study. We thank Professor Gerry Fowkes (ankle-brachial index collaboration) and Professor Colin Baigent (Antithrombotic Trialists' and Cholesterol Treatment Trialists') for their assistance in establishing that existing trialists'

collaborations could not address these research questions. Monwenna Rogers assisted in development and piloting of the search strategy, Francesco Cappuccio (European Society of Hypertension Working Group on Hypertension and Cardiovascular Risk assessment in subjects living in or emigrating from Low Resource Settings) advised on ethnic classification across cohorts. Oana Builete assisted with translation of Spanish language papers. Chang-Sheng Sheng assisted in preparing the Elderly Chinese Cohort data. James White piloted and commented on the draft data request proforma. We thank Stephen Hippisley-Cox at ClinRisk Ltd for calculating ORISK2-2017 scores from an input data file prepared by the authors. C.E. Clark proposed the study; C.E. Clark, K. Boddy, F.C. Warren, V. Aboynas, L. Cloutier, R.J. McManus, A.C. Shore, R.S. Taylor, and J.L. Campbell were co-applicants on this project; S.T.J. McDonagh and S.F. Moore were researchers on the project. The protocol was drafted by C.E. Clark, F.C. Warren, R.S. Taylor, and J.L. Campbell, then revised, and edited by all co-applicants. K. Boddy led and coordinated public and patient involvement throughout the study; J. Goddard, N. Reed, M. Turner were the public and patient advisors, S.T.J. McDonagh, S.F. Moore, J.L. Campbell, A.C. Shore, and C.E. Clark undertook literature searches, C.E. Clark liaised with and obtained data from collaborating authors. F.C. Warren undertook data cleaning and led the analyses, R.S. Taylor supervised the analyses, A.C. Shore, L. Cloutier, R.J. McManus, and V. Aboynas advised on study conduct, analysis, and interpretation of findings. All authors contributed to the article and have read and reviewed the final article, which was then approved by the independent monitoring group. C.E. Clark has full access to the data and will act as guarantor for the study. The following collaborating authors contributed data to the INTERPRESS-IPD Collaboration and contributed to the final article: Mid Devon cohorts: C.E. Clark; Elderly Chinese: J.-G. Wang; Vietnam Experience Study: J. White; Diabetes Alliance for Research in England: A. Hattersley; Aspirin for Asymptomatic Atherosclerosis: J. Price; Invecchiare in Chianti: L. Ferrucci; Heinz-Nixdorf Recall Study: R. Erbel; Second Manifestations of ARterial disease: J. Westerink; LRC & San Diego Population Study: M. Criqui; Fuencarral Health Center: C. Lahoz; Peripheral Arterial Disease: M.T. Alzamor; Epidemiology of dementia in Central Africa: M. Guerchet; Multi Ethnic Study of Atherosclerosis: R.L. McClelland; Lifestyle Interventions and Independence for Elders & Walking and Leg Circulation Study: M.M. McDermott; Limburg Peripheral Arterial Occlusive Disease Study: H.E. Stoffers; Men born in 1914: G. Engström; Look Action for Health in Diabetes: M. Espeland; Kinmen Health Survey: S.-Y. Chuang; Viborg Women Cohort: M. Dahl; Surrogate markers for Micro- and Macrovascular hard endpoints as Innovative diabetes tools: A.C. Shore; Improving interMediAte RiSk management Study: R. Ramos Blanés.

### Sources of Funding

This study was funded by the National Institute for Health Research (NIHR) Research for Patient Benefit Programme (PB-PG-0215-36009). C.E. Clark was supported by an NIHR Clinical Lectureship award. R.J. McManus receives support from the NIHR Oxford Collaboration for Leadership in Applied Health Research and Care. The views expressed are those of the authors and not necessarily those of the NIHR, the National Health Service, or the Department of Health.

### Disclosures

C.E. Clark has received an honorarium from Bayer (unrelated to interarm BP differences work) and has been loaned bilateral blood pressure (BP) monitors by Microlife and Jawon Medical for unrestricted evaluation. R.J. McManus has received monitors for BP research from Omron. No company has had, or will have, any involvement in the design, conduct or reporting of this study. The other authors report no conflicts.

## REFERENCES

- Naghavi M, Wang HD, Lozano R, Davis A, Liang XF, Zhou MG, Vollset SE, Ozgoren AA, Abdalla S, Abd-Allah F, et al. Global, regional, and national age-sex specific all-cause and cause-specific mortality for 240 causes of death, 1990-2013: a systematic analysis for the Global Burden of Disease Study 2013. *Lancet*. 2015;385:117-171. doi: 10.1016/S0140-6736(14)61682-2
- Sundstrom J, Arima H, Woodward M, Jackson R, Karmali K, Lloyd-Jones D, Baigent C, Emberson J, Rahimi K, MacMahon S, et al. Blood pressure-lowering treatment based on cardiovascular risk: a meta-analysis of individual patient data. *Lancet*. 2014;384:591-598. doi: 10.1016/S0140-6736(14)61212-5
- Wald NJ, Law MR. A strategy to reduce cardiovascular disease by more than 80%. *BMJ*. 2003;326:1419. doi: 10.1136/bmj.326.7404.1419
- Dzeshka MS, Gill PS, Lip GY. Cardiovascular risk prediction: balancing complexity against simple practicality. *Br J Gen Pract*. 2015;65:4-5. doi: 10.3399/bjgp15X683005
- Simon A, Levenson J. May subclinical arterial disease help to better detect and treat high-risk asymptomatic individuals? *J Hypertens*. 2005;23:1939-1945. doi: 10.1097/01.hjh.0000184407.20257.58

6. National Institute for Health and Care Excellence. Hypertension in adults: diagnosis and management. (NG 136). London, 2019.
7. Williams B, Mancia G, Spiering W, Agabiti Rosei E, Azizi M, Burnier M, Clement DL, Coca A, de Simone G, Dominiczak A, et al; ESC Scientific Document Group. 2018 ESC/ESH guidelines for the management of arterial hypertension. *Eur Heart J*. 2018;39:3021–3104. doi: 10.1093/eurheartj/ehy339
8. Nerenberg KA, Zarnke KB, Leung AA, Dasgupta K, Butalia S, McBrien K, Harris KC, Nakhla M, Cloutier L, Gelfer M, et al. Hypertension Canada's 2018 guidelines for diagnosis, risk assessment, prevention, and treatment of hypertension in adults and children. *Can J Cardiol*. 2018;34:506–525. doi: 10.1016/j.cjca.2018.02.022
9. Whelton PK, Carey RM, Aronow WS, Casey DE, Collins KJ, Dennison Himmelfarb C, DePalma SM, Gidding S, Jamerson KA, et al. 2017 ACC/AHA/AAPA/ABC/ACPM/AGS/APhA/ASH/ASPC/NMA/PCNA guideline for the prevention, detection, evaluation, and management of high blood pressure in adults. A report of the American College of Cardiology/American Heart Association Task Force on Clinical Practice Guidelines. *Hypertension*. 2018;71:1269–1324. doi: 10.1161/HYP.000000000000066
10. Clark CE, Taylor RS, Shore AC, Campbell JL. Prevalence of systolic interarm differences in blood pressure for different primary care populations: systematic review and meta-analysis. *Br J Gen Pract*. 2016;66:e838–e847. doi: 10.3399/bjgp16X687553
11. Abovans V, Kaminen A, Allison MA, McDermott MM, Crouse JR, Ni H, Szklo M, Criqui MH. The epidemiology of subclavian stenosis and its association with markers of subclinical atherosclerosis: the Multi-Ethnic Study of Atherosclerosis (MESA). *Atherosclerosis*. 2010;211:266–270. doi: 10.1016/j.atherosclerosis.2010.01.013
12. Clark CE, Taylor RS, Shore AC, Ukoumunne OC, Campbell JL. Association of a difference in systolic blood pressure between arms with vascular disease and mortality: a systematic review and meta-analysis. *Lancet*. 2012;379:905–914. doi: 10.1016/S0140-6736(11)61710-8
13. Su HM, Lin TH, Hsu PC, Chu CY, Lee WH, Chen SC, Lee CS, Voon WC, Lai WT, et al. Association of interarm systolic blood pressure difference with atherosclerosis and left ventricular hypertrophy. *PLoS ONE*. 2012;7:e41173. doi: 10.1371/journal.pone.0041173
14. Canepa M, Milaneschi Y, Ameri P, AlGhatrif M, Leoncini G, Spallarossa P, Pontremoli R, Brunelli C, Strait JB, Lakatta EG, et al. Relationship between inter-arm difference in systolic blood pressure and arterial stiffness in community-dwelling older adults. *J Clin Hypertens (Greenwich)*. 2013;15:880–887. doi: 10.1111/jch.12178
15. Ma W, Zhang B, Yang Y, Qi L, Meng L, Zhang Y, Huo Y. Correlating the relationship between interarm systolic blood pressure and cardiovascular disease risk factors. *J Clin Hypertens*. 2017;19:466–467. doi: 10.1111/jch.12987
16. Clark CE, Steele AM, Taylor RS, Shore AC, Ukoumunne OC, Campbell JL. Interarm blood pressure difference in people with diabetes: measurement and vascular and mortality implications: a cohort study. *Diabetes Care*. 2014;37:1613–1620. doi: 10.2337/dc13-1576
17. Okada H, Fukui M, Tanaka M, Matsumoto S, Mineoka Y, Nakanishi N, Asano M, Yamazaki M, Hasegawa G, Nakamura N. A difference in systolic blood pressure between arms and between lower limbs is a novel risk marker for diabetic nephropathy in patients with type 2 diabetes. *Hypertens Res*. 2013;36:403–407. doi: 10.1038/hr.2012.207
18. Cao K, Xu J, Shangquan Q, Hu W, Li P, Cheng X, Su H. Association of an inter-arm systolic blood pressure difference with all-cause and cardiovascular mortality: an updated meta-analysis of cohort studies. *Int J Cardiol*. 2015;189:211–219. doi: 10.1016/j.ijcard.2015.04.079
19. Clark CE, Taylor RS, Shore AC, Campbell JL. The difference in blood pressure readings between arms and survival: primary care cohort study. *BMJ*. 2012;344:e1327. doi: 10.1136/bmj.e1327
20. White J, Mortensen LH, Kivimäki M, Gale CR, Batty GD. Interarm differences in systolic blood pressure and mortality among US army veterans: aetiological associations and risk prediction in the Vietnam Experience Study. *Eur J Prev Cardiol*. 2014;21:1394–1400. doi: 10.1177/2047487313496193
21. Weinberg I, Gona P, O'Donnell CJ, Jaff MR, Murabito JM. The systolic blood pressure difference between arms and cardiovascular disease in the Framingham Heart Study. *Am J Med*. 2014;127:209–215. doi: 10.1016/j.amjmed.2013.10.027
22. Clark CE, Boddy K, Warren FC, Taylor RS, Abovans V, Cloutier L, McManus RJ, Shore AC, Campbell JL. Associations between interarm differences in blood pressure and cardiovascular disease outcomes: protocol for an individual patient data meta-analysis and development of a prognostic algorithm. *BMJ Open*. 2017;7:e016844. doi: 10.1136/bmjopen-2017-016844
23. Stewart LA, Clarke M, Rovers M, Riley RD, Simmonds M, Stewart G, Tierney JF; PRISMA-IPD Development Group. Preferred reporting items for systematic review and meta-analyses of individual participant data: the PRISMA-IPD statement. *JAMA*. 2015;313:1657–1665. doi: 10.1001/jama.2015.3656
24. Hayden JA, van der Windt DA, Cartwright JL, Côté P, Bombardier C. Assessing bias in studies of prognostic factors. *Ann Intern Med*. 2013;158:280–286. doi: 10.7326/0003-4819-158-4-201302190-00009
25. Miller R, Siegmund D. Maximally selected Chi square statistics. *Biometrics*. 1982;38:1011–1016.
26. Higgins JP, Thompson SG. Quantifying heterogeneity in a meta-analysis. *Stat Med*. 2002;21:1539–1558. doi: 10.1002/sim.1186
27. Altman DG, Vergouwe Y, Royston P, Moons KG. Prognosis and prognostic research: validating a prognostic model. *BMJ*. 2009;338:b605. doi: 10.1136/bmj.b605
28. Lahoz C, Barrionuevo M, García-Fernández T, Vicente I, García-Iglesias MF, Mostaza JM. Cardiovascular morbidity-mortality associated to ankle-brachial index in the general population. *Rev Clin Esp (Barc)*. 2014;214:1–7. doi: 10.1016/j.rce.2013.08.008
29. Chuang SY, Sung SH, Cheng HM, Hsu PF, Chou P, Chen CH. Ankle-brachial index and brachial-ankle pulse wave velocity jointed to predict mortality in a community study. *Eur Heart J*. 2015;36:1015–1016.
30. Hooi JD, Stoffers HE, Kester AD, Rinkens PE, Kaiser V, van Ree JW, Knottnerus JA. Risk factors and cardiovascular diseases associated with asymptomatic peripheral arterial occlusive disease. The Limburg PAOD Study. Peripheral arterial occlusive disease. *Scand J Prim Health Care*. 1998;16:177–182. doi: 10.1080/028134398750003142
31. Espeland MA, Newman AB, Sink K, Gill TM, King AC, Miller ME, Guralnik J, Katula J, Church T, Manini T, et al; LIFE Study Group. Associations between ankle-brachial index and cognitive function: results from the lifestyle interventions and independence for elders trial. *Am Med Dir Assoc*. 2015;16:682–689. doi: 10.1016/j.jamda.2015.03.010
32. Akaike H. A new look at the statistical model identification. *IEEE Trans Autom Control*. 1974;19:716–723.
33. Royston P, Altman DG. External validation of a Cox prognostic model: principles and methods. *BMC Med Res Methodol*. 2013;13:33. doi: 10.1186/1471-2288-13-33
34. Goff DC Jr, Lloyd-Jones DM, Bennett G, Coady S, D'Agostino RB, Gibbons R, Greenland P, Lackland DT, Levy D, O'Donnell CJ, et al; American College of Cardiology/American Heart Association Task Force on Practice Guidelines. 2013 ACC/AHA guideline on the assessment of cardiovascular risk: a report of the American College of Cardiology/American Heart Association Task Force on Practice Guidelines. *Circulation*. 2014;129(25 Suppl 2):S49–S73. doi: 10.1161/01.cir.0000437741.48606.98
35. D'Agostino RB Sr, Vasan RS, Pencina MJ, Wolf PA, Cobain M, Massaro JM, Kannel WB. General cardiovascular risk profile for use in primary care: the Framingham Heart Study. *Circulation*. 2008;117:743–753. doi: 10.1161/CIRCULATIONAHA.107.699579
36. Hippisley-Cox J, Coupland C, Vinogradova Y, Robson J, Minhas R, Sheikh A, Brindle P. Predicting cardiovascular risk in England and Wales: prospective derivation and validation of QRISK2. *BMJ*. 2008;336:1475–1482. doi: 10.1136/bmj.39609.449676.25
37. Conroy RM, Pyörälä K, Fitzgerald AP, Sans S, Menotti A, De Backer G, De Bacquer D, Ducimetière P, Jousilahti P, Keil U, et al; SCORE project group. Estimation of ten-year risk of fatal cardiovascular disease in Europe: the SCORE project. *Eur Heart J*. 2003;24:987–1003. doi: 10.1016/s0195-668x(03)00114-3
38. Egger M, Davey Smith G, Schneider M, Minder C. Bias in meta-analysis detected by a simple, graphical test. *BMJ*. 1997;315:629–634. doi: 10.1136/bmj.315.7109.629
39. Shock NW; Gerontology Research Center (U.S.). *Normal Human Aging: The Baltimore Longitudinal Study of Aging*. Washington, DC: U.S. Dept. of Health and Human Services; 1984.
40. Diehm C, Schuster A, Spengel FA, Trampisch HJ, Allenberg JR, Darius H, Haberl R, Fricke R, Holland-Letz T, Lange S, et al. getABI: German epidemiological trial on ankle brachial index for elderly patients in family practice to detect peripheral arterial disease, significant marker for high mortality. *Vasa*. 2002;31:241–248. doi: 10.1024/0301-1526.31.4.241
41. Jager A, Kostense PJ, Ruhé HG, Heine RJ, Nijpels G, Dekker JM, Bouter LM, Stehouwer CD. Microalbuminuria and peripheral arterial disease are independent predictors of cardiovascular and all-cause mortality, especially

- among hypertensive subjects: five-year follow-up of the Hoorn Study. *Arterioscler Thromb Vasc Biol*. 1999;19:617–624. doi: 10.1161/01.atv.19.3.617
42. Ortiz-Panoso E, Lajous M, Yunes-Diaz E, Mercado N, Luviano A, Flores-Silva F, Dircio-Delgado V, Cantu-Brito C, Catzin-Kuhlmann A, Lopez-Ridaura R. Peripheral arterial disease and carotid atherosclerosis among middle-aged women living in Chiapas, Mexico: preliminary results. *Circulation*. 2013;127:AP112
  43. Kojima I, Ninomiya T, Hata J, Fukuhara M, Hirakawa Y, Mukai N, Yoshida D, Kitazono T, Kiyohara Y. A low ankle brachial index is associated with an increased risk of cardiovascular disease: the Hisayama study. *J Atheroscler Thromb*. 2014;21:966–973. doi: 10.5551/jat.22608
  44. De Graauw J, Chonchol M, Poppert H, Etgen T, Sander D. Relationship between kidney function and risk of asymptomatic peripheral arterial disease in elderly subjects. *Nephrol Dial Transplant*. 2011;26:927–932. doi: 10.1093/ndt/gfq455
  45. Allison MA, Laughlin GA, Barrett-Connor E, Langer R. Association between the ankle-brachial index and future coronary calcium (the Rancho Bernardo study). *Am J Cardiol*. 2006;97:181–186. doi: 10.1016/j.amjcard.2005.08.019
  46. Sakamoto R, Okumiya K, Ishine M, Wada T, Fujisawa M, Imai H, Ishimoto Y, Kimura Y, Fukutomi E, Chen W, et al. Predictors of difficulty in carrying out basic activities of daily living among the old-old: a 2-year community-based cohort study. *Geriatr Gerontol Int*. 2016;16:214–222. doi: 10.1111/ggi.12462
  47. McKenna M, Wolfson S, Kuller L. The ratio of ankle and arm arterial pressure as an independent predictor of mortality. *Atherosclerosis*. 1991;87:119–128. doi: 10.1016/0021-9150(91)90014-t
  48. Abbott RD, Petrovitch H, Rodriguez BL, Yano K, Schatz IJ, Popper JS, Masaki KH, Ross GW, Curb JD. Ankle/brachial blood pressure in men >70 years of age and the risk of coronary heart disease. *Am J Cardiol*. 2000;86:280–284. doi: 10.1016/s0002-9149(00)00914-0
  49. Carbayo Herencia JA, Artigao Rodenas LM, Divison Garrote JA, Caldevilla Bernardo D, Sanchis Domenech C, Torres Moreno P. Ankle-brachial index and the incidence of all-cause mortality and cardiovascular morbidity in a prospective cohort study of a general population. [Spanish]. *Clinica e Investigacion en Arteriosclerosis*. 2011;23:21–28.
  50. Filippella M, Lillaz E, Ciccarelli A, Giardina S, Massimetti E, Navaretta F, Antico A, Veronesi M, Lombardi G, Colao A, et al. Ankle brachial pressure index usefulness as predictor factor for coronary heart disease in diabetic patients. *J Endocrinol Invest*. 2007;30:721–725. doi: 10.1007/BF03350808
  51. Bundó M, Muñoz L, Pérez C, Montero JJ, Montellà N, Torán P, Pera G. Asymptomatic peripheral arterial disease in type 2 diabetes patients: a 10-year follow-up study of the utility of the ankle brachial index as a prognostic marker of cardiovascular disease. *Ann Vasc Surg*. 2010;24:985–993. doi: 10.1016/j.avsg.2010.06.001
  52. Mlacac B, Blinc A, Pohar M, Stare J. Peripheral arterial disease and ankle-brachial pressure index as predictors of mortality in residents of Metlika County, Slovenia. *Croat Med J*. 2006;47:327–334.
  53. Xu Y, Li J, Luo Y, Wu Y, Zheng L, Yu J, Ma J, Gu J, Hu D. The association between ankle-brachial index and cardiovascular or all-cause mortality in metabolic syndrome of elderly Chinese. *Hypertens Res*. 2007;30:613–619. doi: 10.1291/hyres.30.613
  54. Ulmer H, Kelleher C, Diem G, Concin H. Long-term tracking of cardiovascular risk factors among men and women in a large population-based health system: the Vorarlberg Health Monitoring & Promotion Programme. *Eur Heart J*. 2003;24:1004–1013. doi: 10.1016/s0195-668x(03)00170-2
  55. Hasimu B, Li J, Nakayama T, Yu J, Yang J, Li X, Hu D. Ankle brachial index as a marker of atherosclerosis in Chinese patients with high cardiovascular risk. *Hypertens Res*. 2006;29:23–28. doi: 10.1291/hyres.29.23
  56. Li J, Luo Y, Xu Y, Yang J, Zheng L, Hasimu B, Jinming Y, Hu D. Risk factors of peripheral arterial disease and relationship between low ankle-brachial index and mortality from all-cause and cardiovascular disease in Chinese patients with type 2 diabetes. *Circ J*. 2007;71:377–381.
  57. Yokoyama H, Sone H, Honjo J, Okizaki S, Yamada D, Shudo R, Shimizu H, Moriya T, Haneda M. Relationship between a low ankle brachial index and all-cause death and cardiovascular events in subjects with and without diabetes. *J Atheroscler Thromb*. 2014;21:574–581.
  58. Tanaka S, Kaneko H, Kano H, Matsuno S, Suzuki S, Takai H, Otsuka T, Uejima T, Oikawa Y, Nagashima K, et al. The predictive value of the borderline ankle-brachial index for long-term clinical outcomes: an observational cohort study. *Atherosclerosis*. 2016;250:69–76. doi: 10.1016/j.atherosclerosis.2016.05.014
  59. Wang Y, Mou Q, Zhao D, Xu Y, Hu D, Ma H, Liu J, Guo X, Li J. Predictive value of ankle-brachial index and blood glucose on the outcomes of six-year all-cause mortality and cardiovascular mortality in a Chinese population of type 2 diabetes patients. *Int Angiol*. 2012;31:586–594.
  60. Guo WW, Li J, Yu JM, Luo YY, Liu H, Zheng LQ, Buaijaer H, Li XK, Hu DY. [The relationship of ankle brachial index to all-cause and cardiovascular disease mortality in Chinese male patients with hypertension]. *Chung-Hua Yu Fang i Hsueh Tsa Chih [Chinese Journal of Preventive Medicine]*. 2007;41:487–491.
  61. Newman AB, Shemanski L, Manolio TA, Cushman M, Mittelmark M, Polak JF, Powe NR, Siscovick D. Ankle-arm index as a predictor of cardiovascular disease and mortality in the Cardiovascular Health Study. The Cardiovascular Health Study Group. *Arterioscler Thromb Vasc Biol*. 1999;19:538–545. doi: 10.1161/01.atv.19.3.538
  62. Diederichsen AC, Rasmussen LM, Søgaard R, Lambrechtsen J, Steffensen FH, Frost L, Egstrup K, Urbonaviciene G, Busk M, Olsen MH, et al. The Danish Cardiovascular Screening Trial (DANCAVAS): study protocol for a randomized controlled trial. *Trials*. 2015;16:554. doi: 10.1186/s13063-015-1082-6
  63. Kallio M, Forsblom C, Groop PH, Groop L, Lepäntalo M. Development of new peripheral arterial occlusive disease in patients with type 2 diabetes during a mean follow-up of 11 years. *Diabetes Care*. 2003;26:1241–1245. doi: 10.2337/diacare.26.4.1241
  64. Hyun S, Forbang NI, Allison MA, Denenberg JO, Criqui MH, Ix JH. Ankle-brachial index, toe-brachial index, and cardiovascular mortality in persons with and without diabetes mellitus. *J Vasc Surg*. 2014;60:390–395. doi: 10.1016/j.jvs.2014.02.008
  65. Kusunose K, Sato M, Yamada H, Saijo Y, Bando M, Hirata Y, Nishio S, Hayashi S, Sata M. Prognostic implications of non-invasive vascular function tests in high-risk atherosclerosis patients. *Circ J*. 2016;80:1034–1040. doi: 10.1253/circj.CJ-15-1356
  66. Merino J, Clara A, Planas A, De Moner A, Gasol A, Contreras C. Influence of an increased ankle/brachial index on cardiovascular risk and survival in adult men with no peripheral arterial disease. [Spanish]. *Angiologia*. 2012;64:1–6.
  67. Feinkohl I, Keller M, Robertson CM, Morling JR, Williamson RM, Nee LD, McLachlan S, Sattar N, Welsh P, Reynolds RM, et al. Edinburgh Type 2 Diabetes Study (ET2DS) Investigators. Clinical and subclinical macrovascular disease as predictors of cognitive decline in older patients with type 2 diabetes: the Edinburgh Type 2 Diabetes Study. *Diabetes Care*. 2013;36:2779–2786. doi: 10.2337/dc12-2241
  68. Ohman EM, Bhatt DL, Steg PG, Goto S, Hirsch AT, Liao CS, Mas JL, Richard AJ, Röther J, Wilson PW; REACH Registry Investigators. The REDUction of Atherothrombosis for Continued Health (REACH) Registry: an international, prospective, observational investigation in subjects at risk for atherothrombotic events-study design. *Am Heart J*. 2006;151:786. e1–786.10. doi: 10.1016/j.ahj.2005.11.004
  69. Velescu A, Clara A, Peñafiel J, Ramos R, Marti R, Grau M, Dégano IR, Marrugat J, Elosua R; REGICOR Study Group. Adding low ankle brachial index to classical risk factors improves the prediction of major cardiovascular events. The REGICOR study. *Atherosclerosis*. 2015;241:357–363. doi: 10.1016/j.atherosclerosis.2015.05.017
  70. Alonso-Bouzón C, Carcaillon L, García-García FJ, Amor-Andrés MS, El Assar M, Rodríguez-Mañás L. Association between endothelial dysfunction and frailty: the Toledo Study for Healthy Aging. *Age (Dordr)*. 2014;36:495–505. doi: 10.1007/s11357-013-9576-1
  71. Hyde Z, Mylankal KJ, Hankey GJ, Flicker L, Norman PE. Peripheral arterial disease increases the risk of subsequent hip fracture in older men: the Health in Men Study. *Osteoporos Int*. 2013;24:1683–1688. doi: 10.1007/s00198-012-2218-0
  72. Bo M, Zanocchi M, Poli L, Molaschi M. The ankle-brachial index is not related to mortality in elderly subjects living in nursing homes. *Angiology*. 2005;56:693–697. doi: 10.1177/0003319705056006060
  73. Grøndal N, Søgaard R, Lindholt JS. Baseline prevalence of abdominal aortic aneurysm, peripheral arterial disease and hypertension in men aged 65–74 years from a population screening study (VIVA trial). *Br J Surg*. 2015;102:902–906. doi: 10.1002/bjs.9825
  74. Clark CE, Taylor RS, Butcher I, Stewart MC, Price J, Fowkes FG, Shore AC, Campbell JL. Inter-arm blood pressure difference and mortality: a cohort study in an asymptomatic primary care population at elevated cardiovascular risk. *Br J Gen Pract*. 2016;66:e297–e308. doi: 10.3399/bjgp16X684949
  75. Ögren M, Hedblad B, Engstrom G, Janzon L. Prevalence and prognostic significance of asymptomatic peripheral arterial disease in 68-year-old men with diabetes. Results from the population study 'Men born in 1914' from Malmö, Sweden. *Eur J Vasc Endovasc Surg*. 2005;29:182–189. doi: 10.1016/j.jevs.2004.11.013
  76. Clark CE, Powell RJ. The differential blood pressure sign in general practice: prevalence and prognostic value. *Fam Pract*. 2002;19:439–441. doi: 10.1093/fampra/19.5.439

77. Dahl M, Frost L, Sogaard R, Klausen IC, Lorentzen V, Lindholt J. A population-based screening study for cardiovascular diseases and diabetes in Danish postmenopausal women: acceptability and prevalence. *BMC Cardiovasc Disord*. 2018;18:20. doi: 10.1186/s12872-018-0758-8
78. Bild DE, Bluemke DA, Burke GL, Detrano R, Diez Roux AV, Folsom AR, Greenland P, Jacob DR Jr, Kronmal R, Liu K, et al. Multi-ethnic study of atherosclerosis: objectives and design. *Am J Epidemiol*. 2002;156:871–881. doi: 10.1093/aje/kw113
79. Criqui MH, Fronek A, Barrett-Connor E, Klauber MR, Gabriel S, Goodman D. The prevalence of peripheral arterial disease in a defined population. *Circulation*. 1985;71:510–515. doi: 10.1161/01.cir.71.3.510
80. Erbel R, Möhlenkamp S, Moebus S, Schmermund A, Lehmann N, Stang A, Dragano N, Grönemeyer D, Seibel R, Kälch H, et al; Heinz Nixdorf Recall Study Investigative Group. Coronary risk stratification, discrimination, and reclassification improvement based on quantification of subclinical coronary atherosclerosis: the Heinz Nixdorf Recall study. *J Am Coll Cardiol*. 2010;56:1397–1406. doi: 10.1016/j.jacc.2010.06.030
81. Clark CE, Thomas D, Llewellyn DJ, Ferrucci L, Bandinelli S, Campbell JL. Systolic inter-arm blood pressure difference and risk of cognitive decline in older people: a cohort study. *Br J Gen Pract*. 2020;70:e472–e480. doi: 10.3399/bjgp20X709589
82. Guerchet M, Mbelesso P, Ndamba-Bandzouzi B, Pilleron S, Desormais I, Lacroix P, Aboyans V, Jésus P, Desport JC, Tchalla AE, et al; EPIDEMCA group. Epidemiology of dementia in Central Africa (EPIDEMCA): protocol for a multicentre population-based study in rural and urban areas of the Central African Republic and the Republic of Congo. *Springerplus*. 2014;3:338. doi: 10.1186/2193-1801-3-338
83. Sheng CS, Liu M, Zeng WF, Huang QF, Li Y, Wang JG. Four-limb blood pressure as predictors of mortality in elderly Chinese. *Hypertension*. 2013;61:1155–1160. doi: 10.1161/HYPERTENSIONAHA.111.00969
84. McDermott MM, Greenland P, Liu K, Guralnik JM, Criqui MH, Dolan NC, Chan C, Celic L, Pearce WH, Schneider JR, et al. Leg symptoms in peripheral arterial disease: associated clinical characteristics and functional impairment. *JAMA*. 2001;286:1599–1606. doi: 10.1001/jama.286.13.1599
85. Alzamora MT, Baena-Diez JM, Sorribes M, Forés R, Toran P, Vicheto M, Pera G, Reina MD, Albaladejo C, Llussà J, et al; PERART study. Peripheral Arterial Disease study (PERART): prevalence and predictive values of asymptomatic peripheral arterial occlusive disease related to cardiovascular morbidity and mortality. *BMC Public Health*. 2007;7:348. doi: 10.1186/1471-2458-7-348
86. Martí R, Parramon D, García-Ortiz L, Rigo F, Gómez-Marcos MA, Sempere I, García-Regalado N, Recio-Rodríguez JI, Agudo-Conde C, Feuerbach N, et al. Improving interMediate risk management. MARK study. *BMC Cardiovasc Disord*. 2011;11:61. doi: 10.1186/1471-2261-11-61
87. Espeland MA, Beavers KM, Gibbs BB, Johnson KC, Hughes TM, Baker LD, Jakicic J, Korytkowski M, Miller M, Bray GA. Ankle-brachial index and inter-arm blood pressure differences as predictors of cognitive function in overweight and obese older adults with diabetes: results from the Action for Health in Diabetes movement and memory study. *Int J Geriatr Psychiatry*. 2015;30:999–1007. doi: 10.1002/gps.4253
88. Clark CE, Casanova F, Gooding K, Pamphilon N, Aizawa K, Mawson D, Adingupu D, Ball C, Worthington F, Elyas S, et al. Inter-arm blood pressure difference and arterial stiffness. *J Hypertens*. 2014;32:e30.
89. Kranenburg G, Spiering W, de Jong PA, Kappelle LJ, de Borst GJ, Cramer MJ, Visseren FLJ, Aboyans V, Westerink J; SMART study group. Inter-arm systolic blood pressure differences, relations with future vascular events and mortality in patients with and without manifest vascular disease. *Int J Cardiol*. 2017;244:271–276. doi: 10.1016/j.ijcard.2017.06.044
90. Wassel CL, Loomba R, Ix JH, Allison MA, Denenberg JO, Criqui MH. Family history of peripheral artery disease is associated with prevalence and severity of peripheral artery disease: the San Diego population study. *J Am Coll Cardiol*. 2011;58:1386–1392. doi: 10.1016/j.jacc.2011.06.023
91. Hlatky MA, Greenland P, Arnett DK, Ballantyne CM, Criqui MH, Elkind MS, Go AS, Harrell FE Jr, Hong Y, Howard BV, et al; American Heart Association Expert Panel on Subclinical Atherosclerotic Diseases and Emerging Risk Factors and the Stroke Council. Criteria for evaluation of novel markers of cardiovascular risk: a scientific statement from the American Heart Association. *Circulation*. 2009;119:2408–2416. doi: 10.1161/CIRCULATIONAHA.109.192278
92. Mortensen MB, Falk E. Limitations of the SCORE-guided European guidelines on cardiovascular disease prevention. *Eur Heart J*. 2017;38:2259–2263. doi: 10.1093/eurheartj/ehw568
93. Schwartz CL, Clark C, Koshiaris C, Gill PS, Greenfield SM, Haque SM, Heer G, Johal A, Kaur R, Mant J, et al. Interarm difference in systolic blood pressure in different ethnic groups and relationship to the “white coat effect”: a cross-sectional study. *Am J Hypertens*. 2017;30:884–891. doi: 10.1093/ajh/hpx073
94. Heneghan C, Perera R, Mant D, Glasziou P. Hypertension guideline recommendations in general practice: awareness, agreement, adoption, and adherence. *Br J Gen Pract*. 2007;57:948–952. doi: 10.3399/096016407782604965
95. Giles TD, Egan P. Inter-arm difference in blood pressure may have serious research and clinical implications. *J Clin Hypertens (Greenwich)*. 2012;14:491–492. doi: 10.1111/j.1751-7176.2012.00668.x
96. Clark CE, Greaves C, Evans PH, Dickens A, Campbell JL. The inter-arm blood pressure difference in type 2 diabetes: a barrier to effective management? *Br J Gen Pract*. 2009;59:428–432. doi: 10.3399/bjgp09X420752
97. Mejzner N, Clark CE, Smith LF, Campbell JL. Trends in the diagnosis and management of hypertension: repeated primary care survey in South West England. *Br J Gen Pract*. 2017;67:e306–e313. doi: 10.3399/bjgp17X690461
98. Hirono A, Kusunose K, Kageyama N, Sumitomo M, Abe M, Fujinaga H, Sata M. Development and validation of optimal cut-off value in inter-arm systolic blood pressure difference for prediction of cardiovascular events. *J Cardiol*. 2018;71:24–30. doi: 10.1016/j.jicc.2017.06.010
99. Tomiyama H, Ohkuma T, Ninomiya T, Mastumoto C, Kario K, Hoshida S, Kita Y, Inoguchi T, Maeda Y, Kohara K, et al; collaborative group for J-BAVEL-IAD (Japan Brachial-Ankle Pulse Wave Velocity Individual Participant Data Meta-Analysis of Prospective Studies to Examine the Significance of Inter-Arm Blood Pressure Difference). Simultaneously measured interarm blood pressure difference and stroke: an individual participants data meta-analysis. *Hypertension*. 2018;71:1030–1038. doi: 10.1161/HYPERTENSIONAHA.118.10923
100. American Heart Association; American College of Cardiology. Pooled cohort equations cardiovascular risk calculator. 2014. <http://tools.acc.org/ASCVD-Risk-Estimator/>. Accessed November 25, 2020.
101. Libby P, King K. Biomarkers: a challenging conundrum in cardiovascular disease. *Arterioscler Thromb Vasc Biol*. 2015;35:2491–2495. doi: 10.1161/ATVBAHA.115.305233
102. Ferket BS, van Kempen BJ, Hunink MG, Agarwal I, Kavousi M, Franco OH, Steyerberg EW, Max W, Fleischmann KE. Predictive value of updating Framingham risk scores with novel risk markers in the U.S. general population. *PLoS One*. 2014;9:e88312. doi: 10.1371/journal.pone.0088312
103. Willis A, Davies M, Yates T, Khunti K. Primary prevention of cardiovascular disease using validated risk scores: a systematic review. *J R Soc Med*. 2012;105:348–356. doi: 10.1258/jrsm.2012.110193