



## Edinburgh Research Explorer

### Maldives Monsoon and Sea Level

**Citation for published version:**

Betzler, C, Alvarez-zarikian, CA, Kroon, D, Lanci, L, Laya, JC, Mee, ALH, Lüdmann, T, Nakakuni, M, Nath, BN, Niino, K, Petruny, LM, Pratiwi, SD, Reijmer, JJG, Reolid, J & Slagle, AL 2017, Maldives Monsoon and Sea Level. in Proceedings of the International Ocean Discovery Program Volume 359. International Ocean Discovery Program.

**Link:**

[Link to publication record in Edinburgh Research Explorer](#)

**Document Version:**

Publisher's PDF, also known as Version of record

**Published In:**

Proceedings of the International Ocean Discovery Program Volume 359

**Publisher Rights Statement:**

Except where otherwise noted, this work is licensed under a Creative Commons Attribution License ([http://creativecommons.org/licenses/by/4.0/deed.en\\_US](http://creativecommons.org/licenses/by/4.0/deed.en_US)). Unrestricted use, distribution, and reproduction are permitted, provided the original author and source are credited. Examples of how to cite this volume or part of this volume are available at <http://publications.iodp.org/proceedings/359/359title.html#bib>.

**General rights**

Copyright for the publications made accessible via the Edinburgh Research Explorer is retained by the author(s) and / or other copyright owners and it is a condition of accessing these publications that users recognise and abide by the legal requirements associated with these rights.

**Take down policy**

The University of Edinburgh has made every reasonable effort to ensure that Edinburgh Research Explorer content complies with UK legislation. If you believe that the public display of this file breaches copyright please contact [openaccess@ed.ac.uk](mailto:openaccess@ed.ac.uk) providing details, and we will remove access to the work immediately and investigate your claim.



## Proceedings of the International Ocean Discovery Program

---

### Volume 359

### Maldives Monsoon and Sea Level

Expedition 359 of the riserless drilling platform

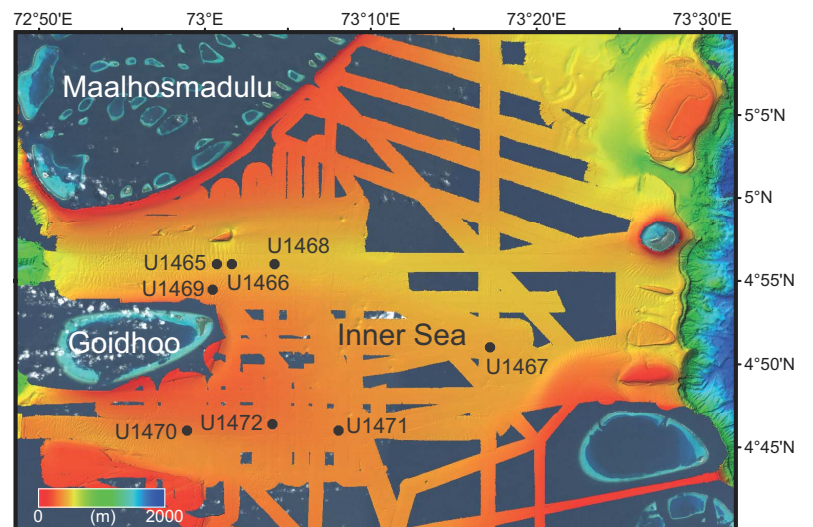
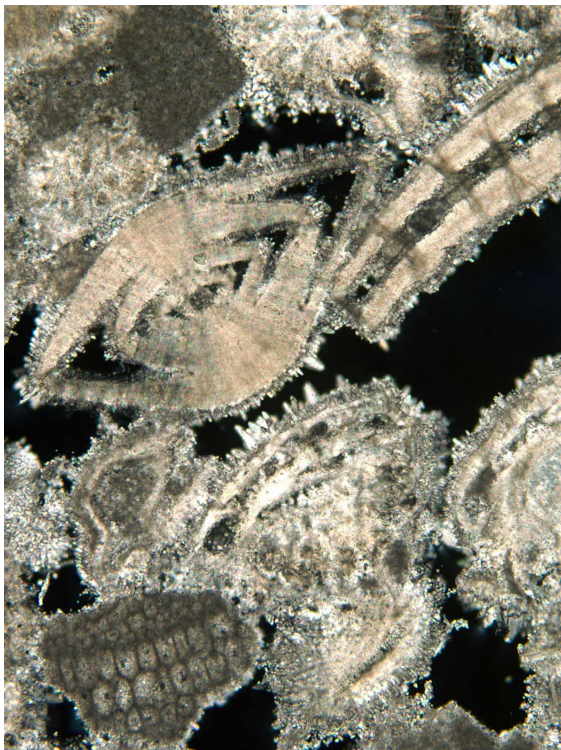
Darwin, Australia, to Colombo, Sri Lanka

Sites U1465–U1472

30 September–30 November 2015

#### Volume authorship

Betzler, C., Eberli, G.P., Alvarez Zarikian, C.A., and the Expedition 359 Scientists



## Publisher's notes

This publication was prepared by the *JOIDES Resolution* Science Operator (JRSO) at Texas A&M University (TAMU) as an account of work performed under the International Ocean Discovery Program (IODP). Funding for IODP is provided by the following international partners:

National Science Foundation (NSF), United States  
Ministry of Education, Culture, Sports, Science and Technology (MEXT), Japan  
European Consortium for Ocean Research Drilling (ECORD)  
Ministry of Science and Technology (MOST), People's Republic of China  
Korea Institute of Geoscience and Mineral Resources (KIGAM)  
Australia-New Zealand IODP Consortium (ANZIC)  
Ministry of Earth Sciences (MoES), India  
Coordination for Improvement of Higher Education Personnel (CAPES), Brazil

Any opinions, findings, and conclusions or recommendations expressed in this publication are those of the author(s) and do not necessarily reflect the views of the participating agencies, TAMU, or Texas A&M Research Foundation.

The bulk of the shipboard-collected core data from this expedition is accessible at <http://iodp.tamu.edu/database/index.html>. If you cannot access this site or need additional data, please contact Data Librarian, International Ocean Discovery Program *JOIDES Resolution* Science Operator, Texas A&M University, 1000 Discovery Drive, College Station TX 77845-9547, USA. Tel: (979) 845-8495; Fax: (979) 458-1617; Email: [database@iodp.tamu.edu](mailto:database@iodp.tamu.edu).

A complete set of the logging data collected during the expedition is available at <http://brg.ldeo.columbia.edu/logdb>. If you have problems downloading the data, wish to receive additional logging data, or have questions regarding the data, please contact Database Administrator, Borehole Research Group, Lamont-Doherty Earth Observatory of Columbia University, PO Box 1000, 61 Route 9W, Palisades NY 10964, USA. Tel: (845) 365-8343; Fax: (845) 365-3182; Email: [logdb@ldeo.columbia.edu](mailto:logdb@ldeo.columbia.edu).

Supplemental data were provided by the authors and may not conform to IODP publication formats.

JRSO expedition photos are the property of IODP and are in the public domain.

Some core photographs have been tonally enhanced to better illustrate particular features of interest. High-resolution images are available upon request.

Cover photograph shows dogtooth cements in *Amphistegina*. Photo credit: IODP JRSO.

## Copyright

Except where otherwise noted, this work is licensed under a Creative Commons Attribution License ([http://creativecommons.org/licenses/by/4.0/deed.en\\_US](http://creativecommons.org/licenses/by/4.0/deed.en_US)). Unrestricted use, distribution, and reproduction are permitted, provided the original author and source are credited.

Examples of how to cite this volume or part of this volume are available at <http://publications.iodp.org/proceedings/359/359title.html#bib>.

## ISSN

World Wide Web: 2377-3189

## Publication date

4 May 2017

## Contents

### Expedition reports

#### Chapters

##### [Expedition 359 summary](#)

C. Betzler et al.

##### [Expedition 359 methods](#)

C. Betzler et al.

##### [Site U1465](#)

C. Betzler et al.

##### [Site U1466](#)

C. Betzler et al.

##### [Site U1467](#)

C. Betzler et al.

##### [Site U1468](#)

C. Betzler et al.

##### [Site U1469](#)

C. Betzler et al.

##### [Site U1470](#)

C. Betzler et al.

##### [Site U1471](#)

C. Betzler et al.

##### [Site U1472](#)

C. Betzler et al.

##### [Data report: surface seawater plankton sampling for coccolithophores undertaken during IODP Expedition 359](#)

Jeremy R. Young, Santi Pratiwi, Xiang Su, and the Expedition 359 Scientists

#### Core descriptions

Visual core descriptions (VCDs), smear slides, and thin sections are combined into PDF files for each site. The entire set of core images in PDF is available in the IMAGES directory.

##### [Site U1465](#)

[Visual core descriptions](#) · [Thin sections](#)

##### [Site U1466](#)

[Visual core descriptions](#) · [Thin sections](#)

##### [Site U1467](#)

[Visual core descriptions](#) · [Thin sections](#)

##### [Site U1468](#)

[Visual core descriptions](#) · [Thin sections](#)

##### [Site U1469](#)

[Visual core descriptions](#) · [Thin sections](#)

##### [Site U1470](#)

[Visual core descriptions](#) · [Thin sections](#)

##### [Site U1471](#)

[Visual core descriptions](#) · [Thin sections](#)

##### [Site U1472](#)

[Visual core descriptions](#)

#### Supplementary material

Supplementary material for the Volume 359 expedition reports includes DESClogik exports in Microsoft Excel, SHIL log sheets in PDF, and an oversized figure of the transects in AI format with a caption in Microsoft Word. A full list of directories can be found in SUPP\_MAT in the volume zip folder or on the [Supplementary material for Volume 359 expedition reports](#) web page.

### Expedition research results

#### Data reports

Titles are available in [HTML](#).

#### Syntheses

Titles are available in [HTML](#).

### Drilling location maps

A site map showing the drilling locations for this expedition and maps showing the drilling locations of all International Ocean Discovery Program (IODP), produced using QGIS (<http://www.qgis.org>), and Integrated Ocean Drilling Program, Ocean Drilling Program (ODP), and Deep Sea Drilling Project (DSDP) expeditions, produced using Generic Mapping Tools (GMT) of Paul Wessel and Walter H.F. Smith (<http://gmt.soest.hawaii.edu>), are available in PDF.

##### [IODP Expedition 359 site map](#)

[IODP map](#) (Expeditions 349–356 and 359)

[Integrated Ocean Drilling Program map](#) (Expeditions 301–348)

[ODP map](#) (Legs 100–210)

[DSDP map](#) (Legs 1–96)

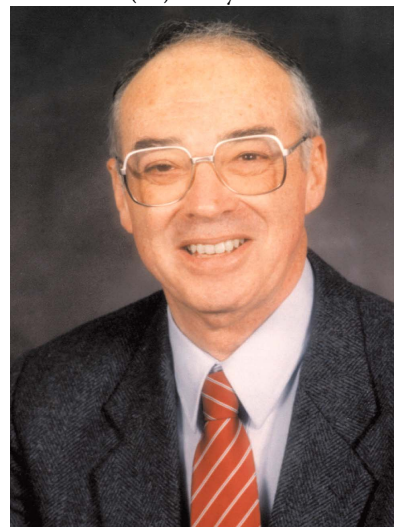
## Dedication

We dedicate this volume to Ed Purdy for his seminal work on the Maldives carbonate platform. In addition to his pioneering studies on modern carbonates of the Bahamas and Belize, Ed was a driving force behind seismic and core studies in the Maldives to further the investigation of Neogene platforms and their response to sea level change.

## Acknowledgments

This research used samples and data provided by the International Ocean Discovery Program (IODP). We thank all of the personnel aboard the R/V *JOIDES Resolution* during Expedition 359 for their skill and dedication. Particular thanks go to the Technical Support staff for the quality and timeliness of their work. We greatly appreciate the qualified advice from the entire drilling crew and their efforts to core the challenging carbonate sections. The success of the expedition was also enabled by the help of the Environmental Protection and Safety Panel, which allowed us to readjust our drilling strategies even during the expedition. Dr. Mohamed Shainee is thanked for personal support that allowed us to drill in the Maldives. The editorial staff at the IODP *JOIDES Resolution* Science Operator at Texas A&M University is thanked for support with publication of this document. We thank Andre Droxler for initiating the planning for an IODP expedition to the Maldives and the other drilling proposal proponents, as well as the members of the Science Evaluation Panel (Chair: Dick Kroon) for making Expedition 359 possible.

Dr. Edward (Ed) Purdy



## Foreword

The International Ocean Discovery Program (IODP) represents the latest incarnation of almost five decades of scientific ocean drilling excellence and is generally accepted as the most successful international collaboration in the history of the Earth sciences. IODP builds seamlessly on the accomplishments of previous phases: the Deep Sea Drilling Project, Ocean Drilling Program, and Integrated Ocean Drilling Program. The 2013–2023 IODP Science Plan (*Illuminating Earth's Past, Present, and Future*) defines four themes and thirteen challenges for this decade of scientific ocean drilling that are both of fundamental importance in understanding how the Earth works and of significant relevance to society as the Earth changes, at least in part in response to anthropogenic forcing. This phase of IODP represents a renewed level of international collaboration in bringing diverse drilling platforms and strategies to increasing our understanding of climate and ocean change, the deep biosphere and evolution of ecosystems, connections between Earth's deep processes and surface manifestations, and geologically induced hazards on human timeframes.

The *Proceedings of the International Ocean Discovery Program* presents the scientific and engineering results of IODP drilling projects, expedition by expedition. As in the preceding Integrated Ocean Drilling Program, expeditions in the new IODP are conducted by three implementing organizations, each providing a different drilling capability. These are the US Implementing Organization (USIO; through September 2014) and the *JOIDES Resolution* Science Operator (JRSO; as of October 2014), providing the leased commercial vessel *JOIDES Resolution* for riserless drilling operations; JAMSTEC's Center for Deep Earth Exploration (CDEX), providing the drillship *Chikyu* for riser and occasional riserless operations; and the European Consortium for Ocean Research Drilling (ECORD) Science Operator (ESO), providing "mission-specific" platforms (MSPs) for expeditions that extend the IODP operational range where neither drillship is suitable, for example, in polar environments and in shallow waters. Scheduling decisions for each capability are made by three independent Facility Boards, each of which includes scientists, operators, and platform funding partners: the *JOIDES Resolution* Facility Board (JRFB), *Chikyu* IODP Board (CIB), and ECORD Facility Board (EFB). At the beginning of the new IODP, the three Facility Boards agreed to utilize Publication Services at the USIO and now the JRSO for production of all expedition *Proceedings* volumes and reports.

The new IODP differs from prior scientific ocean drilling programs in that it has neither a central management organization nor commingled funding for program-wide activities. Yet this phase of IODP retains a fundamental integrative structural element: a "bottom-up" evaluation of all proposals for drilling expeditions by a single advisory structure composed of scientists representing all international program partners. International scientists may submit drilling proposals to the Science Support Office; all submitted proposals are then evaluated by a Science Evaluation Panel in the context of the Science Plan.

The new IODP also has a second internationally integrative level for high-level discussion and consensus-building: the IODP Forum. The Forum is charged with assessing program-wide progress toward achieving the Science Plan. At present, IODP involves 26 international financial partners, including the United States, Japan, an Australia/New Zealand consortium (ANZIC), Brazil, China, India, South Korea, and the eighteen members of ECORD (Austria, Belgium, Canada, Denmark, Finland, France, Germany, Ireland, Israel, Italy, the Netherlands, Norway, Poland, Portugal, Spain, Sweden, Switzerland, and the United Kingdom). This enhanced membership in the new IODP represents a remarkable level of international collaboration that remains one of the greatest ongoing strengths of scientific ocean drilling.

James A. Austin Jr.  
Chair, IODP Forum



# International Ocean Discovery Program

## *JOIDES Resolution* Science Operator

Website: <http://iodp.tamu.edu>

### **IODP JRSO**

International Ocean Discovery Program  
Texas A&M University  
1000 Discovery Drive  
College Station TX 77845-9547  
USA  
Tel: (979) 845-2673; Fax: (979) 845-4857  
Email: [information@iodp.tamu.edu](mailto:information@iodp.tamu.edu)

### **IODP JRSO Curation and Laboratories**

IODP Gulf Coast Repository (GCR)  
Texas A&M University  
1000 Discovery Drive  
College Station TX 77845-9547  
USA  
Tel: (979) 845-8490; Fax: (979) 845-1303  
Email: [rumford@iodp.tamu.edu](mailto:rumford@iodp.tamu.edu)

## European Consortium for Ocean Research Drilling, Science Operator (ESO)

Website: <http://www.eso.ecord.org>

### **IODP ESO Coordinator: Science, Logistics, and Operations**

British Geological Survey  
The Lyell Centre  
Research Avenue South  
Edinburgh EH14 4AP  
United Kingdom  
Tel: (44) 131-667-1000; Fax: (44) 131-668-4140  
Email: [eso@bgs.ac.uk](mailto:eso@bgs.ac.uk)

### **IODP ESO Curation and Laboratories**

IODP Bremen Core Repository (BCR)  
Center for Marine Environmental Sciences (MARUM)  
University of Bremen  
Leobener Strasse  
28359 Bremen  
Germany  
Tel: (49) 421-218-65560; Fax: (49) 421-218-98-65560  
Email: [bcr@marum.de](mailto:bcr@marum.de)

### **IODP ESO Petrophysics**

European Petrophysics Consortium  
Department of Geology  
University of Leicester  
Leicester LE1 7RH  
United Kingdom  
Tel: (44) 116-252-3611; Fax: (44) 116-252-3918  
Email: [sjd27@leicester.ac.uk](mailto:sjd27@leicester.ac.uk)

## Japan Agency for Marine-Earth Science and Technology (JAMSTEC)

Website: <http://www.jamstec.go.jp/chikyuu/e>

### **IODP Japan Science Operator**

Center for Deep Earth Exploration (CDEX)  
Japan Agency for Marine-Earth Science and Technology  
Yokohama Institute for Earth Sciences  
3175-25 Showa-machi  
Kanazawa-ku, Yokohama  
Kanagawa 236-0001  
Japan  
Tel: (81) 45-778-5643; Fax: (81) 45-778-5704  
Email: [cdex@jamstec.go.jp](mailto:cdex@jamstec.go.jp)

### **IODP Japan Curation and Laboratories**

IODP Kochi Institute for Core Sample Research (KCC)  
Japan Agency for Marine-Earth Science and Technology  
200 Monobe Otsu  
3175-25 Showa-machi  
Nankoku City, Kochi 783-8502  
Japan  
Tel: (81) 88-864-6705; Fax: (81) 88-878-2192  
Email: [kcc.contact@jamstec.go.jp](mailto:kcc.contact@jamstec.go.jp)

## Expedition 359 participants\*

### Expedition 359 scientists

**Christian G. Betzler****Co-Chief Scientist**

Institute of Geology  
CEN, University of Hamburg  
Bundesstrasse 55  
Hamburg 20146  
Germany

[christian.betzler@uni-hamburg.de](mailto:christian.betzler@uni-hamburg.de)

**Gregor P. Eberli****Co-Chief Scientist**

Department of Marine Geosciences  
Rosenstiel School of Marine and Atmospheric Science  
University of Miami  
Miami FL 33149  
USA

[geberli@rsmas.miami.edu](mailto:geberli@rsmas.miami.edu)

**Carlos A. Alvarez Zarikian****Expedition Project Manager/Staff Scientist**

International Ocean Discovery Program  
Texas A&M University  
1000 Discovery Drive  
College Station TX 77845  
USA

[zarikian@iodp.tamu.edu](mailto:zarikian@iodp.tamu.edu)

**Montserrat Alonso-García****Paleontologist (foraminifers)**

Instituto Português do Mar e da Atmosfera (IPMA)  
Rua Alfredo Magalhães Ramalho, 6  
1495-006 Lisboa  
Portugal

[montserrat.alonso@ipma.pt](mailto:montserrat.alonso@ipma.pt)

Present address:

Centro de Ciências do Mar (CCMAR)  
Universidade do Algarve  
Campus de Gambelas  
8005-139 Faro  
Portugal

**Or M. Bialik****Sedimentologist**

Dr. Moses Strauss Department of Marine Geosciences  
The Leon H. Charney School of Marine Sciences  
University of Haifa  
Carmel 31905  
Israel

[obialik@campus.haifa.ac.il](mailto:obialik@campus.haifa.ac.il)

**Clara L. Blättler****Inorganic Geochemist**

Department of Geosciences  
Princeton University  
Guyot Hall  
Princeton NJ 08544  
USA

[blattler@princeton.edu](mailto:blattler@princeton.edu)

**Junhua Adam Guo****Physical Properties Specialist**

Department of Geological Sciences  
California State University Bakersfield  
9001 Stockdale Highway  
Bakersfield CA 93311  
USA

[jguo1@csub.edu](mailto:jguo1@csub.edu)

**Sébastien Haffen****Physical Properties Specialist**

Ecole Nationale Supérieure de Géologie  
Université de Lorraine  
2 rue du Doyen Marcel Roubault  
54501 Vandœuvre-les-Nancy  
France

[sebastien.haffen@gmail.com](mailto:sebastien.haffen@gmail.com)

**Senay Horozal****Physical Properties Specialist**

Petroleum and Marine Research Division  
Korea Institute of Geoscience and Mineral Resources (KIGAM)  
Gwahang-no 124, Yuseong-gu  
Daejeon 305-350  
Republic of Korea

[shorozal@kigam.re.kr](mailto:shorozal@kigam.re.kr)

**Mayuri Inoue****Inorganic Geochemist**

Okayama University  
Department of Earth Sciences  
3-1-1 Tsushima-naka 700-8530  
Japan

[inouem@cc.okayama-u.ac.jp](mailto:inouem@cc.okayama-u.ac.jp)

**Luigi Jovane****Paleomagnetist**

Instituto Oceanográfico da Universidade de São Paulo  
Praça do Oceanográfico 191  
São Paulo SP 05508-120  
Brazil

[jovane@usp.br](mailto:jovane@usp.br)

\*Addresses at time of expedition, except where updated by participants.



**Dick Kroon****Paleontologist (foraminifers)**

Department of Geology and Geophysics  
University of Edinburgh  
Grant Institute, The King's Buildings, James Hutton Road  
Edinburgh EH9 3FE  
United Kingdom  
[dick.kroon@ed.ac.uk](mailto:dick.kroon@ed.ac.uk)

**Luca Lanci****Paleomagnetist**

Istituto di Scienze della Terra  
Università di Urbino  
Via S. Chiara 27  
61029 Urbino  
Italy  
[luca.lanci@uniurb.it](mailto:luca.lanci@uniurb.it)

**Juan Carlos Laya****Sedimentologist**

Department of Geology and Geophysics and  
Berg-Hughes Center for Petroleum and Sedimentary  
Systems  
Texas A&M University  
Mail Stop 3115  
College Station TX 77843-3115  
USA  
[layajc@geos.tamu.edu](mailto:layajc@geos.tamu.edu)

**Anna Ling Hui Mee****Sedimentologist**

Department of Marine Geosciences  
University of Miami  
RSMAS MGG N260  
Key Biscayne FL 33149  
USA  
[a.ling@rsmas.miami.edu](mailto:a.ling@rsmas.miami.edu)

**Thomas Lüdmann****Downhole Measurements**

Institute of Geology  
CEN, University of Hamburg  
Bundesstrasse 55  
20146 Hamburg  
Germany  
[thomas.luedmann@uni-hamburg.de](mailto:thomas.luedmann@uni-hamburg.de)

**Masatoshi Nakakuni****Organic Geochemist**

Soka University  
Department of Environmental Engineering for Symbiosis  
1-236 Tangi-cyo  
Hachioji-shi  
Tokyo 192-0003  
Japan  
[e13d5702@soka-u.jp](mailto:e13d5702@soka-u.jp)

**Bejugam N. Nath****Sedimentologist**

Geological Oceanography Division  
CSIR—National Institute of Oceanography  
Dona Paula  
Goa 403004  
India  
[nagender@nio.org](mailto:nagender@nio.org)

**Kaoru Niino****Paleontologist (radiolarians)**

Yamagata University  
Graduate School of Science and Engineering  
1-4-12 Kojirakawa-machi  
Yamagata City 990-8560  
Japan  
[s14e510m@st.yamagata-u.ac.jp](mailto:s14e510m@st.yamagata-u.ac.jp)

**Loren M. Petruny****Paleontologist (benthic foraminifers)**

Environmental Science and Policy Department  
David King Hall Room 3005, MSN 5F2  
George Mason University  
4400 University Drive  
Fairfax VA 22030-4444  
USA  
[lpetruny@gmu.edu](mailto:lpetruny@gmu.edu)

**Santi D. Pratiwi****Paleontologist (nannofossils)**

Akita University  
Faculty of International Resource Science  
1-1 Teagata-Gakuencho  
Akita 010-8502  
Japan  
[rhabdosphaera@gmail.com](mailto:rhabdosphaera@gmail.com)

**John J.G. Reijmer****Sedimentologist**

Faculty of Earth and Life Sciences  
Vrije Universiteit Amsterdam  
De Boelelaan 1085  
1081 HV Amsterdam  
Netherlands  
[j.j.reijmer@vu.nl](mailto:j.j.reijmer@vu.nl)

**Jesús Reolid****Sedimentologist**

Institute of Geology  
CEN, University of Hamburg  
Bundesstrasse 55  
20146 Hamburg  
Germany  
[jesus.reolid@uni-hamburg.de](mailto:jesus.reolid@uni-hamburg.de)

**Angela L. Slagle****Downhole Measurements**

Lamont-Doherty Earth Observatory  
Columbia University  
Borehole Building 61 Route 9W  
Palisades NY 10964  
USA  
[aslagle@ldeo.columbia.edu](mailto:aslagle@ldeo.columbia.edu)

**Craig R. Sloss**  
**Sedimentologist**

School of Earth, Environment, and Biological Sciences  
Queensland University of Technology  
R-Block 317, 2 George Street  
Brisbane QLD 4001  
Australia  
[c.sloss@qut.edu.au](mailto:c.sloss@qut.edu.au)

**Xiang Su**  
**Paleontologist (nannofossils)**

Key Laboratory of Marginal Sea Geology  
South China Sea Institute of Oceanology  
Chinese Academy of Sciences  
164 West Xingang Road  
Guangzhou 510301  
China  
[suxiang@scsio.ac.cn](mailto:suxiang@scsio.ac.cn)

**Peter K. Swart**  
**Inorganic Geochemist**

Department of Marine Geosciences  
University of Miami  
4600 Rickenbacker Causeway  
Miami FL 33148  
USA  
[pswart@rsmas.miami.edu](mailto:pswart@rsmas.miami.edu)

**Education and outreach**

**Juliet M. Crowell**  
**Education/Outreach Officer**

1390 Bryant Street Northeast Apartment 304  
Washington DC 20018  
USA  
[belize67@aol.com](mailto:belize67@aol.com)  
[crowelljuliet@gmail.com](mailto:crowelljuliet@gmail.com)

**James D. Wright**  
**Stratigraphic Correlator**

Department of Earth and Planetary Sciences  
Rutgers, The State University of New Jersey  
610 Taylor Road  
Piscataway NJ 08854-8066  
USA  
[jdwright@rci.rutgers.edu](mailto:jdwright@rci.rutgers.edu)

**Zhengquan Yao**  
**Sedimentologist**

Department of Marine Geology  
First Institute of Oceanography (FIO) State Oceanic  
Administration (SOA)  
6 Xian Xia Ling Road  
Qingdao Shandong 266061  
China  
[yaozq@126.com](mailto:yaozq@126.com)

**Jeremy R. Young**  
**Paleontologist (nannofossils)**

Earth Sciences  
University College London  
Gower Street  
London WC1E 6BT  
United Kingdom  
[jeremy.young@ucl.ac.uk](mailto:jeremy.young@ucl.ac.uk)

**Michelle D. Darrieu**  
**Education/Outreach Officer**

Rue de la fauvette, 2  
1180 Bruxelles  
Belgium  
[michele\\_darrieu@hotmail.com](mailto:michele_darrieu@hotmail.com)

## **Operational and technical staff**

### **Siem Offshore AS officials**

**Steve Bradley**  
Master of the Drilling Vessel

**Wayne Malone**  
Offshore Installation Manager

### **JRSO shipboard personnel and technical representatives**

**Robert Aduddell**  
Engineer

**Lisa Crowder**  
Laboratory Officer

**Timothy Blaisdell**  
Applications Developer

**Douglas Cummings**  
Publications Specialist

**Courtney Bouchard**  
Marine Laboratory Specialist (temporary)

**Benjamin Daniel**  
Thin Section Laboratory

**Lisa Brandt**  
Chemistry Laboratory

**William Davidson**  
Marine Laboratory Specialist (temporary)

**Timothy Bronk**  
Assistant Laboratory Officer

**Daniel Fields**  
Marine Laboratory Specialist (temporary)

**Chad Broyles**  
Curatorial Specialist

**Seth Frank**  
X-Ray/Microbiology Laboratory

**Timothy Fulton**  
Imaging Specialist

**Clayton Furman**  
Logging Engineer

**Randy Gjesvold**  
Marine Instrumentation Specialist

**Rachael Gray**  
Chemistry Laboratory

**Margaret Hastedt**  
Core Laboratory

**Sandra Herrmann**  
Assistant Laboratory Officer

**Michael Hodge**  
Marine Computer Specialist

### IODP Publication Services staff\*

**Douglas Cummings**  
Graphics Specialist II

**Gudelia (“Gigi”) Delgado**  
Senior Publications Coordinator

**Ekanta Desai**  
Graphics Specialist II

**Patrick H. Edwards**  
Production Specialist IV

**Jaime A. Gracia**  
Supervisor of Production and Graphics

**Jenni Hesse**  
Editor III

**Rhonda Kappler**  
Graphics Specialist III

**Shana C. Lewis**  
Editor III

**Ginny Lowe**  
Reports Coordinator

**Minh Nhut Huynh**  
Marine Computer Specialist

**Mike Meiring**  
Electronics Specialist

**Shawn Miller**  
Marine Laboratory Specialist (temporary)

**Beth Novak**  
Paleomagnetism Laboratory

**Michael Storms**  
Operations Superintendent

**Garrick Van Rensburg**  
Marine Instrumentation Specialist

**Hai (James) Zhao**  
Applications Developer

**Amy McWilliams**  
Editor IV

**Lorri Peters**  
Manager of Publication Services

**Kenneth Sherar**  
Production Specialist III

**Alyssa Stephens**  
Graphics Specialist III

**Courtney Van Gemert**  
Production Specialist I

**Crystal Wolfe**  
Production Specialist III

**Jean Wulfson**  
Graphics Specialist III

**Ann Yeager**  
Distribution Specialist

\*At time of publication.

# Expedition-related bibliography\*

## IODP publications

### Scientific Prospectus

Betzler, C., Eberli, G.P., Giosan, L., and Alvarez Zarikian, C.A., 2014. *Expedition 359 Scientific Prospectus: Sea Level, Currents, and Monsoon Evolution in the Indian Ocean*. International Ocean Discovery Program.

<http://dx.doi.org/10.14379/iodp.sp.359.2014>

Betzler, C., Eberli, G.P., and Alvarez Zarikian, C.A., 2015. Sea level, currents, and monsoon evolution in the Indian Ocean. *International Ocean Discovery Program Scientific Prospectus Addendum*, 359.

<http://dx.doi.org/10.14379/iodp.sp.359add.2015>

### Preliminary Report

Betzler, C.G., Eberli, G.P., Alvarez Zarikian, C.A., and the Expedition 359 Scientists, 2016. *Expedition 359 Preliminary Report: Maldives Monsoon and Sea Level*. International Ocean Discovery Program.

<http://dx.doi.org/10.14379/iodp.pr.359.2016>

### Proceedings volume

Betzler, C., Eberli, G.P., Alvarez Zarikian, C.A., and the Expedition 359 Scientists, *Maldives Monsoon and Sea Level*. Proceedings of the International Ocean Discovery Program, 359: College Station, TX (International Ocean Discovery Program). <http://dx.doi.org/10.14379/iodp.proc.359.2017>

### Expedition reports

Betzler, C., Eberli, G.P., Alvarez Zarikian, C.A., Alonso-García, M., Bialik, O.M., Blättler, C.L., Guo, J.A., Haffen, S., Horozal, S., Inoue, M., Jovane, L., Kroon, D., Lanci, L., Laya, J.C., Ling Hui Mee, A., Lüdmann, T., Nakakuni, M., Nath, B.N., Niino, K., Petruny, L.M., Pratiwi, S.D., Reijmer, J.J.G., Reolid, J., Slagle, A.L., Sloss, C.R., Su, X., Swart, P.K., Wright, J.D., Yao, Z., and Young, J.R., 2017. Expedition 359 summary. *In* Betzler, C., Eberli, G.P., Alvarez Zarikian, C.A., and the Expedition 359 Scientists, *Maldives Monsoon and Sea Level*. Proceedings of the International Ocean Discovery Program, 359: College Station, TX (International Ocean Discovery Program). <http://dx.doi.org/10.14379/iodp.proc.359.101.2017>

Betzler, C., Eberli, G.P., Alvarez Zarikian, C.A., Alonso-García, M., Bialik, O.M., Blättler, C.L., Guo, J.A., Haffen, S., Horozal, S., Inoue, M., Jovane, L., Kroon, D., Lanci, L., Laya, J.C., Ling Hui Mee, A., Lüdmann, T., Nakakuni, M., Nath, B.N., Niino, K., Petruny, L.M., Pratiwi, S.D., Reijmer, J.J.G., Reolid, J., Slagle, A.L., Sloss, C.R., Su, X., Swart, P.K., Wright, J.D., Yao, Z., and Young, J.R., 2017. Expedition 359 methods. *In* Betzler, C., Eberli, G.P., Alvarez Zarikian, C.A., and the Expedition 359 Scientists, *Maldives Monsoon and Sea Level*. Proceedings of the International Ocean Discovery Program, 359: College Station, TX (International Ocean Discovery Program). <http://dx.doi.org/10.14379/iodp.proc.359.102.2017>

Betzler, C., Eberli, G.P., Alvarez Zarikian, C.A., Alonso-García, M., Bialik, O.M., Blättler, C.L., Guo, J.A., Haffen, S., Horozal, S., Inoue, M., Jovane, L., Kroon, D., Lanci, L., Laya, J.C., Ling Hui Mee, A., Lüdmann, T., Nakakuni, M., Nath, B.N., Niino, K., Petruny, L.M., Pratiwi, S.D., Reijmer, J.J.G., Reolid, J., Slagle, A.L., Sloss, C.R., Su, X., Swart, P.K., Wright, J.D., Yao, Z., and Young, J.R., 2017. Site U1465. *In* Betzler, C., Eberli, G.P., Alvarez Zarikian, C.A., and the Expedition 359 Scientists, *Maldives Monsoon and Sea Level*. Proceedings of the International Ocean Discovery Program, 359: College Station, TX (International Ocean Discovery Program). <http://dx.doi.org/10.14379/iodp.proc.359.103.2017>

Betzler, C., Eberli, G.P., Alvarez Zarikian, C.A., Alonso-García, M., Bialik, O.M., Blättler, C.L., Guo, J.A., Haffen, S., Horozal, S., Inoue, M., Jovane, L., Kroon, D., Lanci, L., Laya, J.C., Ling Hui Mee, A., Lüdmann, T., Nakakuni, M., Nath, B.N., Niino, K., Petruny, L.M., Pratiwi, S.D., Reijmer, J.J.G., Reolid, J., Slagle, A.L., Sloss, C.R., Su, X., Swart, P.K., Wright, J.D., Yao, Z., and Young, J.R., 2017. Site U1466. *In* Betzler, C., Eberli, G.P., Alvarez Zarikian, C.A., and the Expedition 359 Scientists, *Maldives Monsoon and Sea Level*. Proceedings of the International Ocean Discovery Program, 359: College Station, TX (International Ocean Discovery Program). <http://dx.doi.org/10.14379/iodp.proc.359.104.2017>

Reolid, J., Slagle, A.L., Sloss, C.R., Su, X., Swart, P.K., Wright, J.D., Yao, Z., and Young, J.R., 2017. Site U1467. *In* Betzler, C., Eberli, G.P., Alvarez Zarikian, C.A., and the Expedition 359 Scientists, *Maldives Monsoon and Sea Level*. Proceedings of the International Ocean Discovery Program, 359: College Station, TX (International Ocean Discovery Program). <http://dx.doi.org/10.14379/iodp.proc.359.105.2017>

Betzler, C., Eberli, G.P., Alvarez Zarikian, C.A., Alonso-García, M., Bialik, O.M., Blättler, C.L., Guo, J.A., Haffen, S., Horozal, S., Inoue, M., Jovane, L., Kroon, D., Lanci, L., Laya, J.C., Ling Hui Mee, A., Lüdmann, T., Nakakuni, M., Nath, B.N., Niino, K., Petruny, L.M., Pratiwi, S.D., Reijmer, J.J.G., Reolid, J., Slagle, A.L., Sloss, C.R., Su, X., Swart, P.K., Wright, J.D., Yao, Z., and Young, J.R., 2017. Site U1468. *In* Betzler, C., Eberli, G.P., Alvarez Zarikian, C.A., and the Expedition 359 Scientists, *Maldives Monsoon and Sea Level*. Proceedings of the International Ocean Discovery Program, 359: College Station, TX (International Ocean Discovery Program). <http://dx.doi.org/10.14379/iodp.proc.359.106.2017>

Betzler, C., Eberli, G.P., Alvarez Zarikian, C.A., Alonso-García, M., Bialik, O.M., Blättler, C.L., Guo, J.A., Haffen, S., Horozal, S., Inoue, M., Jovane, L., Kroon, D., Lanci, L., Laya, J.C., Ling Hui Mee, A., Lüdmann, T., Nakakuni, M., Nath, B.N., Niino, K., Petruny, L.M., Pratiwi, S.D., Reijmer, J.J.G., Reolid, J., Slagle, A.L., Sloss, C.R., Su, X., Swart, P.K., Wright, J.D., Yao, Z., and Young, J.R., 2017. Site U1469. *In* Betzler, C., Eberli, G.P., Alvarez Zarikian, C.A., and the Expedition 359 Scientists, *Maldives Monsoon and Sea Level*. Proceedings of the International Ocean Discovery Program, 359: College Station, TX (International Ocean Discovery Program). <http://dx.doi.org/10.14379/iodp.proc.359.107.2017>

Betzler, C., Eberli, G.P., Alvarez Zarikian, C.A., Alonso-García, M., Bialik, O.M., Blättler, C.L., Guo, J.A., Haffen, S., Horozal, S., Inoue, M., Jovane, L., Kroon, D., Lanci, L., Laya, J.C., Ling Hui Mee, A., Lüdmann, T., Nakakuni, M., Nath, B.N., Niino, K., Petruny, L.M., Pratiwi, S.D., Reijmer, J.J.G., Reolid, J., Slagle, A.L., Sloss, C.R., Su, X., Swart, P.K., Wright, J.D., Yao, Z., and Young, J.R., 2017. Site U1470. *In* Betzler, C., Eberli, G.P., Alvarez Zarikian, C.A., and the Expedition 359 Scientists, *Maldives Monsoon and Sea Level*. Proceedings of the International Ocean Discovery Program, 359: College Station, TX (International Ocean Discovery Program). <http://dx.doi.org/10.14379/iodp.proc.359.108.2017>

Betzler, C., Eberli, G.P., Alvarez Zarikian, C.A., Alonso-García, M., Bialik, O.M., Blättler, C.L., Guo, J.A., Haffen, S., Horozal, S., Inoue, M., Jovane, L., Kroon, D., Lanci, L., Laya, J.C., Ling Hui Mee, A., Lüdmann, T., Nakakuni, M., Nath, B.N., Niino, K., Petruny, L.M., Pratiwi, S.D., Reijmer, J.J.G., Reolid, J., Slagle, A.L., Sloss, C.R., Su, X., Swart, P.K., Wright, J.D., Yao, Z., and Young, J.R., 2017. Site U1471. *In* Betzler, C., Eberli, G.P., Alvarez Zarikian, C.A., and the Expedition 359 Scientists, *Maldives Monsoon and Sea Level*. Proceedings of the International Ocean Discovery Program, 359: College Station, TX (International Ocean Discovery Program). <http://dx.doi.org/10.14379/iodp.proc.359.109.2017>

Betzler, C., Eberli, G.P., Alvarez Zarikian, C.A., Alonso-García, M., Bialik, O.M., Blättler, C.L., Guo, J.A., Haffen, S., Horozal, S., Inoue, M., Jovane, L., Kroon, D., Lanci, L., Laya, J.C., Ling Hui Mee, A., Lüdmann, T., Nakakuni, M., Nath, B.N., Niino, K., Petruny, L.M., Pratiwi, S.D., Reijmer, J.J.G., Reolid, J., Slagle, A.L., Sloss, C.R., Su, X., Swart, P.K., Wright, J.D., Yao, Z., and Young, J.R., 2017. Site U1472. *In* Betzler, C., Eberli, G.P., Alvarez Zarikian, C.A., and the Expedition 359 Scientists, *Maldives Monsoon and Sea Level*. Proceedings of the International Ocean Discovery Program, 359: College Station, TX (International Ocean Discovery Program). <http://dx.doi.org/10.14379/iodp.proc.359.110.2017>

\*The Expedition-related bibliography is continually updated online (<http://publications.iodp.org/proceedings/359/359title.html#bib>). Please send updates to [PubCrd@iodp.tamu.edu](mailto:PubCrd@iodp.tamu.edu).

Betzler, C., Eberli, G.P., Alvarez Zarikian, C.A., Alonso-García, M., Bialik, O.M., Blättler, C.L., Guo, J.A., Haffen, S., Horozal, S., Inoue, M., Jovane, L., Kroon, D., Lanci, L., Laya, J.C., Ling Hui Mee, A., Lüdmann, T., Nakakuni, M., Nath, B.N., Niino, K., Petruny, L.M., Pratiwi, S.D., Reijmer, J.J.G., Reolid, J., Slagle, A.L., Sloss, C.R., Su, X., Swart, P.K., Wright, J.D., Yao, Z., and Young, J.R., 2017. Site U1472. *In* Betzler, C., Eberli, G.P., Alvarez Zarikian, C.A., and the Expedition 359 Scientists, *Maldives Monsoon and Sea Level*. Proceedings of the International Ocean Discovery Program, 359: College Station, TX (International Ocean Discovery Program).

<http://dx.doi.org/10.14379/iodp.proc.359.110.2017>

Young, J.R., Pratiwi, S., Su, X., and the Expedition 359 Scientists, 2017. Data report: surface seawater plankton sampling for coccolithophores undertaken during IODP Expedition 359. *In* Betzler, C., Eberli, G.P., Alvarez Zarikian, C.A., and the Expedition 359 Scientists, *Maldives Monsoon and*

*Sea Level*. Proceedings of the International Ocean Discovery Program, 359: College Station, TX (International Ocean Discovery Program).

<http://dx.doi.org/10.14379/iodp.proc.359.111.2017>

#### Supplementary material

Betzler, C., Eberli, G.P., Alvarez Zarikian, C.A., and the Expedition 359 Scientists, 2017. Supplementary material,

<http://dx.doi.org/10.14379/iodp.proc.359supp.2017>. *Supplement to*

Betzler, C., Eberli, G.P., Alvarez Zarikian, C.A., and the Expedition 359 Scientists, *Maldives Monsoon and Sea Level*. Proceedings of the International Ocean Discovery Program, 359: College Station, TX (International Ocean Discovery Program).

<http://dx.doi.org/10.14379/iodp.proc.359.2017>