



THE UNIVERSITY *of* EDINBURGH

## Edinburgh Research Explorer

### **Lack of AcrB Efflux Function Confers Loss of Virulence on *Salmonella enterica* Serovar Typhimurium**

**Citation for published version:**

Wang-Kan, X, Blair, JMA, Chirullo, B, Betts, J, La Ragione, RM, Ivens, A, Ricci, V, Opperman, TJ & Piddock, LJV 2017, 'Lack of AcrB Efflux Function Confers Loss of Virulence on *Salmonella enterica* Serovar Typhimurium' *mBio*, vol 8, no. 4. DOI: 10.1128/mBio.00968-17

**Digital Object Identifier (DOI):**

[10.1128/mBio.00968-17](https://doi.org/10.1128/mBio.00968-17)

**Link:**

[Link to publication record in Edinburgh Research Explorer](#)

**Document Version:**

Publisher's PDF, also known as Version of record

**Published In:**

*mBio*

**Publisher Rights Statement:**

Copyright © 2017 Wang-Kan et al. This is an open-access article distributed under the terms of the Creative Commons Attribution 4.0 International license.

**General rights**

Copyright for the publications made accessible via the Edinburgh Research Explorer is retained by the author(s) and / or other copyright owners and it is a condition of accessing these publications that users recognise and abide by the legal requirements associated with these rights.



**Take down policy**

The University of Edinburgh has made every reasonable effort to ensure that Edinburgh Research Explorer content complies with UK legislation. If you believe that the public display of this file breaches copyright please contact [openaccess@ed.ac.uk](mailto:openaccess@ed.ac.uk) providing details, and we will remove access to the work immediately and investigate your claim.





# Lack of AcrB Efflux Function Confers Loss of Virulence on *Salmonella enterica* Serovar Typhimurium

Xuan Wang-Kan,<sup>a</sup>  Jessica M. A. Blair,<sup>a</sup> Barbara Chirullo,<sup>b</sup> Jonathan Betts,<sup>c</sup> Roberto M. La Ragione,<sup>c</sup> Alasdair Ivens,<sup>d</sup> Vito Ricci,<sup>a</sup> Timothy J. Opperman,<sup>e</sup>  Laura J. V. Piddock<sup>a</sup>

Institute of Microbiology and Infection, College of Medical and Dental Sciences, The University of Birmingham, Birmingham, United Kingdom<sup>a</sup>; Unit of Prophylaxis and Control of Bacterial Zoonoses, Department of Veterinary Public Health and Food Safety, Istituto Superiore di Sanità, Rome, Italy<sup>b</sup>; School of Veterinary Medicine, Faculty of Health and Medical Sciences, University of Surrey, Guildford, United Kingdom<sup>c</sup>; Centre for Immunity, Infection and Evolution, University of Edinburgh, Edinburgh, United Kingdom<sup>d</sup>; Microbiotix, Inc., Anti-Infectives R&D, Worcester, Massachusetts, USA<sup>e</sup>

**ABSTRACT** AcrAB-TolC is the paradigm resistance-nodulation-division (RND) multi-drug resistance efflux system in Gram-negative bacteria, with AcrB being the pump protein in this complex. We constructed a nonfunctional AcrB mutant by replacing D408, a highly conserved residue essential for proton translocation. Western blotting confirmed that the AcrB D408A mutant had the same native level of expression of AcrB as the parental strain. The mutant had no growth deficiencies in rich or minimal medium. However, compared with wild-type SL1344, the mutant had increased accumulation of Hoechst 33342 dye and decreased efflux of ethidium bromide and was multidrug hypersusceptible. The D408A mutant was attenuated *in vivo* in mouse and *Galleria mellonella* models and showed significantly reduced invasion into intestinal epithelial cells and macrophages *in vitro*. A dose-dependent inhibition of invasion was also observed when two different efflux pump inhibitors were added to the wild-type strain during infection of epithelial cells. RNA sequencing (RNA-seq) revealed downregulation of bacterial factors necessary for infection, including those in the *Salmonella* pathogenicity islands 1, 2, and 4; quorum sensing genes; and *phoPQ*. Several general stress response genes were upregulated, probably due to retention of noxious molecules inside the bacterium. Unlike loss of AcrB protein, loss of efflux function did not induce overexpression of other RND efflux pumps. Our data suggest that gene deletion mutants are unsuitable for studying membrane transporters and, importantly, that inhibitors of AcrB efflux function will not induce expression of other RND pumps.

**IMPORTANCE** Antibiotic resistance is a major public health concern. In Gram-negative bacteria, overexpression of the AcrAB-TolC multidrug efflux system confers resistance to clinically useful drugs. Here, we show that loss of AcrB efflux function causes loss of virulence in *Salmonella enterica* serovar Typhimurium. This is due to the reduction of bacterial factors necessary for infection, which is likely to be caused by the retention of noxious molecules inside the bacterium. We also show that, in contrast to loss of AcrB protein, loss of efflux does not induce overexpression of other efflux pumps from the same family. This indicates that there are differences between loss of efflux protein and loss of efflux that make gene deletion mutants unsuitable for studying the biological function of membrane transporters. Understanding the biological role of AcrB will help to assess the risks of targeting efflux pumps as a strategy to combat antibiotic resistance.

**KEYWORDS** AcrB, SPI, *Salmonella*, *Salmonella* pathogenicity island, efflux, motility, transcriptome, virulence

Received 8 June 2017 Accepted 16 June 2017 Published 18 July 2017

**Citation** Wang-Kan X, Blair JMA, Chirullo B, Betts J, La Ragione RM, Ivens A, Ricci V, Opperman TJ, Piddock LJV. 2017. Lack of AcrB efflux function confers loss of virulence on *Salmonella enterica* serovar Typhimurium. mBio 8:e00968-17. <https://doi.org/10.1128/mBio.00968-17>.

**Editor** Julian E. Davies, University of British Columbia

**Copyright** © 2017 Wang-Kan et al. This is an open-access article distributed under the terms of the [Creative Commons Attribution 4.0 International license](https://creativecommons.org/licenses/by/4.0/).

Address correspondence to Laura J. V. Piddock, [l.j.v.piddock@bham.ac.uk](mailto:l.j.v.piddock@bham.ac.uk).

This article is a direct contribution from a Fellow of the American Academy of Microbiology. Solicited external reviewers: William Shafer, Emory University School of Medicine; Robert Bonomo, Louis Stokes Cleveland VA Medical Center.

Antimicrobial resistance (AMR) is a major public health concern (1). Infections caused by AMR microorganisms are more difficult to treat and have been associated with worse disease outcomes (2, 3). Recent studies also suggest that AMR bacteria can be more virulent than their antimicrobial-susceptible counterparts (3, 4). Overexpression of multidrug resistance (MDR) efflux pump genes is a common mechanism of intrinsic and evolved AMR in Gram-negative bacteria (5). We previously reported that a multidrug-resistant (MDR) *Salmonella enterica* serovar Typhimurium (*S. Typhimurium*) strain with a mutated AcrB MDR efflux pump was responsible for failure of treatment in a 52-year-old patient (6, 7). MDR efflux pumps are integral inner membrane transporters that confer resistance to multiple antibiotics and other chemicals (5). AcrB belongs to the resistance-nodulation-division (RND) family, members of which are the main MDR transporters in Gram-negative bacteria. RND pumps function as drug/proton antiporters. They associate with an outer membrane protein and a periplasmic adapter protein to form a tripartite MDR efflux system (8). The best-studied RND efflux system is AcrAB-TolC, formed by the AcrB RND efflux pump, the TolC outer membrane protein, and the AcrA periplasmic adapter protein. This system is the most abundant RND efflux complex in the *Enterobacteriaceae* family (9).

AcrAB-TolC of *Escherichia coli* has been the main focus of study for structural studies, giving important information about the stoichiometry of the system, assembly and disassembly, substrate (drug) binding pockets and molecular interactions, and the proton translocation pathway (8–12). However, to investigate the relationship between MDR efflux and virulence, tractable infection models are required. *Salmonella enterica* is an invasive human pathogen that has a high genetic similarity to *E. coli* and for which there are multiple infection models. The AcrB pump has 97% amino acid similarity between the two species; thus, *Salmonella* provides an ideal model to study the role of the pump in the overall biology of the bacterium. Furthermore, the enterobacterial AcrB is highly conserved with those of other bacterial species, such as *Pseudomonas* spp. and *Acinetobacter* spp.; thus, the results obtained from *Salmonella* can be translated to other bacteria. Previous studies have shown that AcrB-deficient mutants of *S. Typhimurium* exhibit impaired invasion of human intestinal epithelial cells and murine macrophages. The *acrB::aph* mutant did not induce membrane ruffles, as shown by electron microscopy, and could not colonize chick intestinal tracts (13). Further studies of the transcriptome indicated a large number of gene expression changes in the *acrB::aph* mutant, including the downregulation of *Salmonella* pathogenicity island (SPI) genes that are essential for invasion (14).

RND efflux systems are also required for virulence in many other species. In *Enterobacter cloacae* and *Klebsiella pneumoniae*, deletion of *acrAB* resulted in impaired ability of the mutants to cause systemic infection (15) and pneumonia in mice (16), respectively. Likewise, deletion of the *acrAB-oprM* system in *Moraxella catarrhalis* decreased invasion of the mutant into pharyngeal epithelial cells (17). In *Vibrio cholerae*, RND efflux systems are essential for the synthesis of toxins and colonization of the small intestine in mice (18). Similarly, CmeABC from *Campylobacter jejuni* is needed for gut colonization of 1-year-old chicks and has been recently associated with expression of a type 6 secretion system (T6SS) (19). In *Pseudomonas aeruginosa*, RND efflux pumps play a dual role in virulence as they export quorum sensing (QS) autoinducers (AIs). Thus, deletion of RND pumps causes loss of virulence due to the absence of AIs, but overexpression of them also causes loss of virulence, as AIs will not accumulate inside the cells to levels required to activate QS-controlled virulence genes (19). Furthermore, the MtrCDE RND efflux system in *Neisseria gonorrhoeae* is required for infection of the genitourinary system in female mice (20). The virulence-related function of RND efflux pumps has also been described in the phytopathogen *Erwinia amylovora*, which is less virulent when *acrAB* is deleted (21).

A criticism that has been raised against all the previous studies is that RND pump gene deletion mutants were used. RND efflux pumps are transmembrane proteins that span the inner membrane of Gram-negative bacteria up to 12 times. Therefore, it is not

**TABLE 1** MICs of AcrB substrates for SL1344 and *acrB* mutants

Strain	MIC ( $\mu\text{g/ml}$ ) of substrate <sup>a</sup> :													
	ACR	ETBR	CIP	NAL	CHL	TET	NOV	FUS	ATM	CAZ	CTX	ERY	OX	MIN
SL1344	512	>2,048	0.030	4	8	2	512	2,048	0.50	1	0.500	256	512	2
$\Delta\text{acrB}$ mutant	64	32	0.008	1	2	0.5	8	32	0.12	0.25	<0.008	8	16	0.25
AcrB D408A	32	32	0.008	1	2	0.5	8	16	0.12	0.25	<0.008	8	16	0.25

<sup>a</sup>Abbreviations: ACR, acriflavine; ETBR, ethidium bromide; CIP, ciprofloxacin; NAL, nalidixic acid; CHL, chloramphenicol; TET, tetracycline; NOV, novobiocin; FUS, fusidic acid; ATM, aztreonam; CAZ, ceftazidime; CTX, cefoxitin; ERY, erythromycin; OX, oxacillin; MIN, minocycline. Mode values from four experiments are shown.

clear whether the absence of a large integral membrane protein or the loss of efflux activity is responsible for the published phenotypes.

In the present study, a mutant incapable of efflux activity via AcrB was constructed by introducing a D408A substitution into the protein via a single nucleotide change in the chromosomal *acrB* gene of *S. Typhimurium* SL1344. The D408A substitution disrupted proton translocation in the pump and was confirmed to abolish efflux. The effect of loss of efflux on virulence in *S. Typhimurium* SL1344 was studied in mouse, *Galleria mellonella*, and tissue culture infection models, and the global effect of loss of efflux in the biology of *Salmonella* was determined by RNA sequencing (RNA-seq). Our data show that the loss of virulence in AcrB-defective mutants is due to loss of efflux pump activity and is not a secondary effect of the absence of an important integral protein. However, we also show that there are differences in transcription between an  $\Delta\text{acrB}$  mutant and the loss-of-function mutant. This suggests that gene deletion/inactivation mutants are unsuitable for studying the physiological role of efflux pumps.

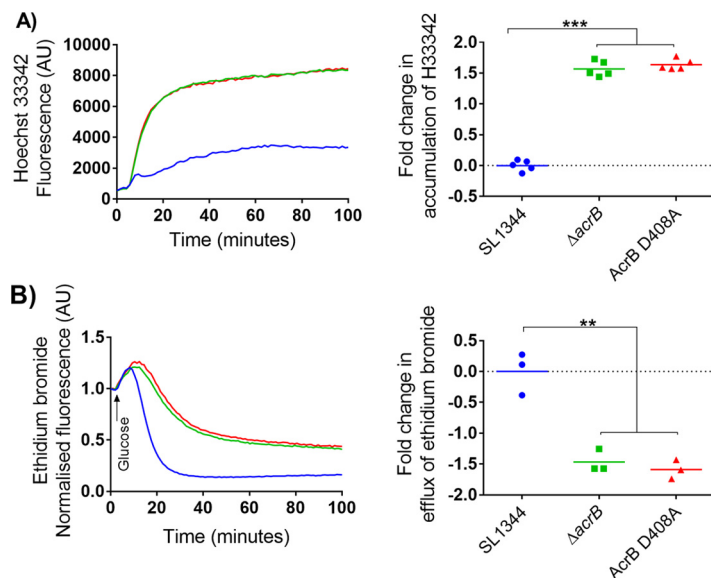
## RESULTS

**The AcrB D408A substitution does not affect bacterial growth and confers susceptibility to AcrB substrates by abolishing efflux.** The presence of a T→G substitution at position 530662 in the chromosome of the D408A mutant was confirmed by whole-genome sequencing (WGS). This translates into the D408A substitution in AcrB (see Fig. S1A in the supplemental material). The expression of AcrB in the D408A mutant was confirmed by Western blotting to be similar to that of the parental strain (100% versus 102%, respectively) (Fig. S1B).

The growth of the AcrB D408A mutant in rich and minimal medium was used to determine the effect of the amino acid substitution upon the fitness of the mutant. The AcrB D408A mutant and the  $\Delta\text{acrB}$  mutant had a similar generation time as the parental strain, SL1344 (Fig. S2). These data indicate that the mutation did not confer a detectable growth defect *in vitro*.

We next determined the susceptibility of the mutant to AcrB substrates. As shown previously, the SL1344  $\Delta\text{acrB}$  mutant was multidrug and dye hypersusceptible. Likewise, the D408A mutant was hypersusceptible to all the substrates tested, with at least a 2-fold dilution decrease in the MICs of all compounds compared to those for the parental strain (Table 1).

To confirm that the MIC results were a consequence of loss of efflux, the efflux activity of all strains was measured by determining the intracellular accumulation of Hoechst 33342 (H33342) and efflux of ethidium bromide (22). Both dyes are MDR efflux pump substrates that fluoresce when bound to double-stranded nucleic acids (23). A time-dependent increase in fluorescence was observed as the H33342 dye accumulated inside the bacterial cells until the system came to an equilibrium/steady state. The *acrB* mutants reached equilibrium faster than SL1344 and had a significantly higher accumulation rate of approximately 2-fold more dye than the parental strain (Fig. 1A). To measure efflux of ethidium bromide, bacteria were preloaded with the dye and subsequently energized with glucose to initiate efflux, which resulted in a decrease in fluorescence over time. The *acrB* mutants reached a steady state faster than SL1344, and efflux was approximately 2-fold lower than in the parental strain (Fig. 1B).



**FIG 1** Accumulation of H33342 and efflux of ethidium bromide in *S. Typhimurium* SL1344 and *acrB* mutants. (A) Accumulation kinetics and final fold change in accumulation of H33342. (B) Efflux kinetics and final fold change in efflux of ethidium bromide (ETBR). Double and triple asterisks denote a significant difference of  $P < 0.005$  and  $P < 0.0001$ , respectively. Data were analyzed with Student's *t* test with Welch's correction. Blue, green, and red curves in left panels correspond to SL1344,  $\Delta acrB$ , and AcrB D408A strains, respectively.

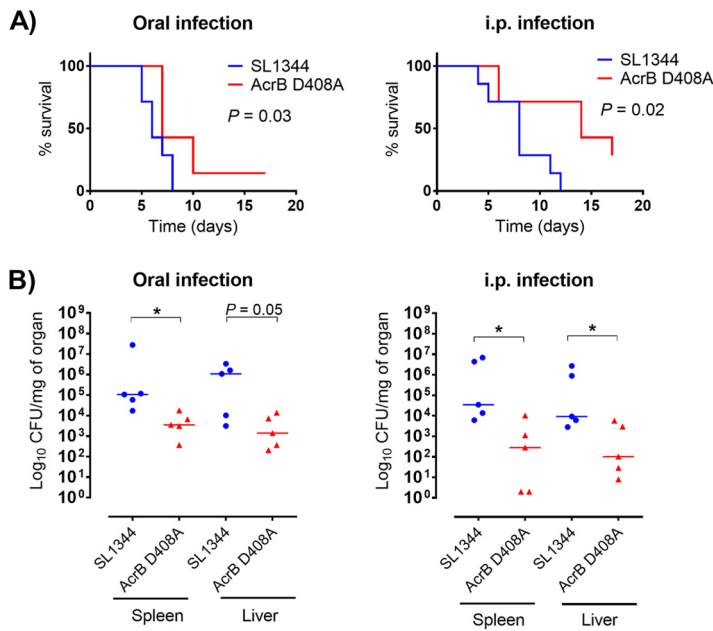
**The AcrB D408A mutant has decreased virulence.** As the mutant did not have growth defects *in vitro* and had a loss of efflux function, we determined the effect of the D408A mutation on virulence. This was assessed in three infection models: a BALB/c mouse model, a *Galleria mellonella* model, and the gentamicin protection tissue culture model.

To assess the overall virulence of the mutant compared with the wild type, survival curves and systemic dissemination by oral or intraperitoneal (i.p.) infection were determined. Oral infection was used to determine dissemination through the natural infection route, whereas i.p. infection was used to assess the ability of the mutant to colonize and persist in organs via direct invasion of the mononuclear phagocyte system (MPS) without going through the enteric barrier. Mice infected with the D408A mutant had a significantly better outcome than those infected with the wild type as shown by the survival curves (Fig. 2A). In the oral infection model, the CFU of mutant per milligram of organ was significantly lower in the spleen. The same trend was observed in the liver; however, there was no significant difference between mutant and wild type ( $P = 0.05$ ) (Fig. 2B). Mice infected via the i.p. route had a significantly lower bacterial load in spleen and liver than those infected with the wild type (Fig. 2B).

Wild-type SL1344 displayed significantly ( $P < 0.05$ ) greater virulence in *G. mellonella* than the AcrB D408A mutant, with 0% larval survival at 96 h compared to  $66\% \pm 14\%$  survival, respectively (Fig. 3A). Significant differences ( $P < 0.05$ ) in melanization between wild type and mutant were also observed over 96 h (Fig. 3B).

The mutant was also attenuated in tissue culture cells. Association and invasion of bacteria into intestinal epithelial cells and macrophages were measured by gentamicin protection assays at 2 and 4 h postinfection. Nonpolarized INT-407 and polarized Caco2 intestinal epithelial cells were used in the infection assays. The invasions of all cell lines by the D408A and the  $\Delta acrB$  mutants were similar. The *acrB* mutants invaded the intestinal epithelial cells significantly less than the parental strain (Fig. 4). The same was found with infection of J774 murine macrophages (Fig. 5).

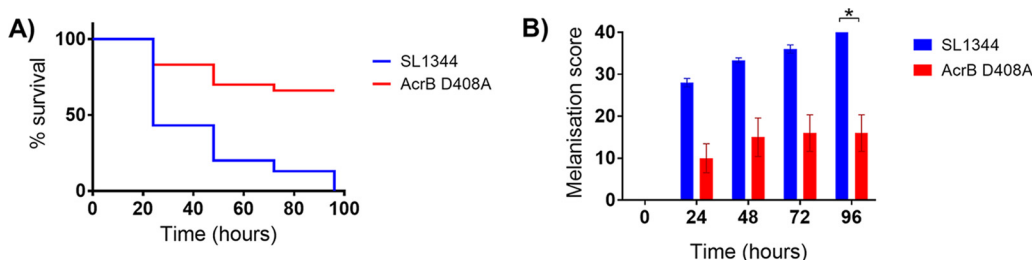
**Efflux pump inhibitors decrease association and invasion of *S. Typhimurium* SL1344 in a dose-dependent manner.** To further determine whether the observed decrease in virulence was due to loss of efflux function, tissue culture assays on INT-407



**FIG 2** Survival curves and CFU per organ of BALB/c mice infected via oral inoculation or intraperitoneal inoculation. (A) Kaplan-Meier survival curves of mice infected with SL1344 or its AcrB D408A mutant for 17 days.  $P$  values were determined by the log rank (Mantel-Cox) test. A  $P$  value of  $<0.05$  denotes a significant difference. (B) CFU per organ of bacteria recovered from spleen and liver at 5 days post-infection. The median is plotted. An asterisk denotes a significant difference of  $P < 0.05$  between two groups, compared by the Mann-Whitney U test.

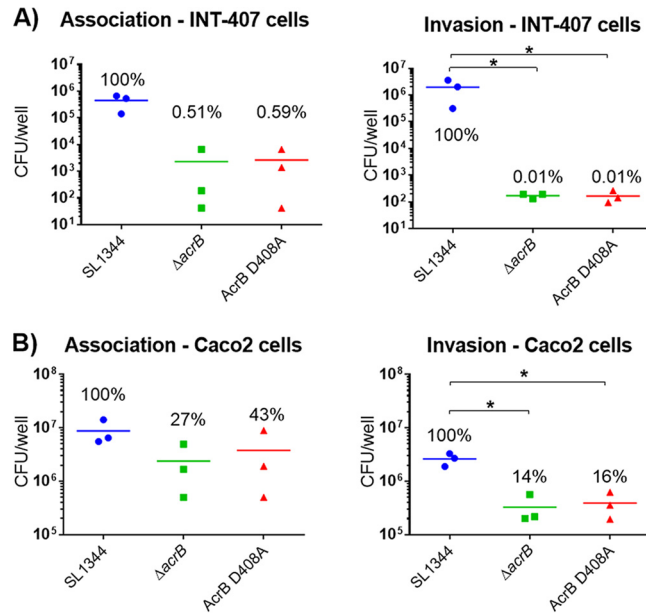
cells were carried out with the parental SL1344 strain and various concentrations of efflux pump inhibitors: phenylalanine-arginine  $\beta$ -naphthylamide (PA $\beta$ N) and MBX3132. PA $\beta$ N is a peptidomimetic compound and was the first efflux pump inhibitor (EPI) described, and recent studies have shown that it binds to the inner binding pocket of AcrB (12). MBX3132 is a new EPI; it is a pyranopyridine derivative that also binds to the inner binding pocket of AcrB but with much higher affinity than PA $\beta$ N (24). The ranges of concentrations tested were chosen from the literature based on their inhibitory effect on efflux of *P. aeruginosa* and *E. coli* (24, 25). The efflux-inhibitory effect of these EPIs was tested on SL1344 using the H33342 and ethidium bromide accumulation and efflux assays. The EPIs showed a dose-dependent inhibitory effect upon accumulation and efflux of the dyes (Fig. S3).

The effect of the EPIs on association and invasion of intestinal epithelial cells was determined. Concentrations of PA $\beta$ N ranging from 10 to 100  $\mu\text{g/ml}$  (34.4 to 344.4  $\mu\text{M}$ ) were used for the infection assays. These had no apparent effect on the viability of eukaryotic cells or bacteria (Fig. S4A) and no significant effect on association of SL1344 with the cells (Fig. 6A). However, PA $\beta$ N significantly affected invasion of SL1344 at concentrations of  $\geq 30$   $\mu\text{g/ml}$  (103.3  $\mu\text{M}$ ), in a dose-dependent manner (Fig. 6A).



**FIG 3** Survival curves and morbidity (melanization) in *Galleria mellonella*. Kaplan-Meier survival curves (A) and melanization (B) of *G. mellonella* infected with SL1344 or the AcrB D408A mutant are shown. An asterisk denotes a significant difference of  $P < 0.05$  between two groups. Analyses were done by Student's  $t$  test.

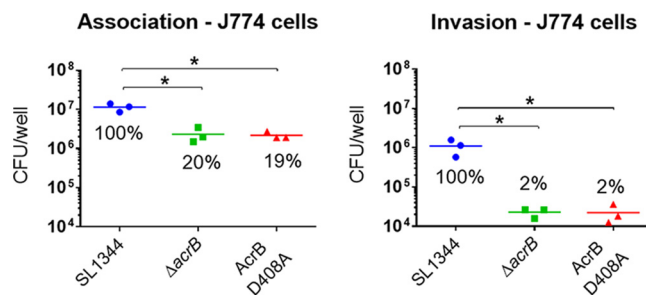




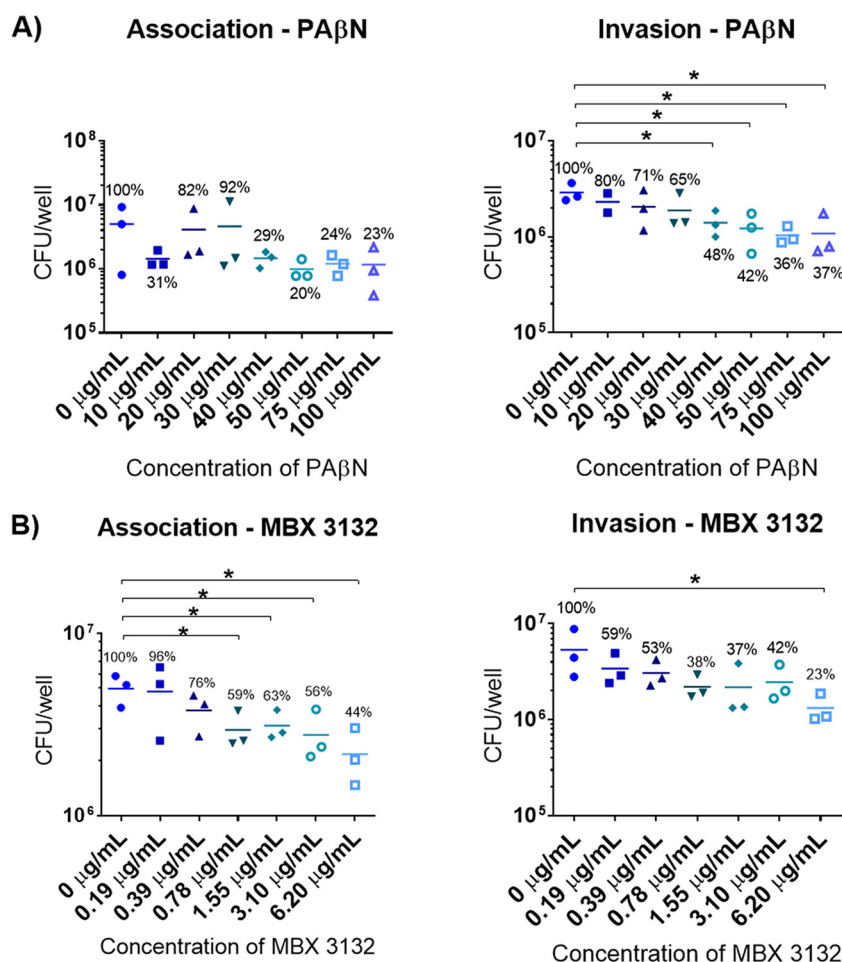
**FIG 4** Infection assays with SL1344 and its *acrB* mutants in INT-407 (A) and Caco2 (B) intestinal epithelial cells. Association (2 h postinfection) and invasion (4 h postinfection) of the  $\Delta acrB$  and the AcrB D408A mutants into INT-407 and Caco2 cells were compared to those of the parental wild-type strain. An asterisk denotes a significant difference of  $P < 0.05$  between two groups. Analyses were done by Student's *t* test with Welch's correction.

MBX3132 at concentrations of 0.19 to 6.2  $\mu\text{g/ml}$  (0.39 to 12.5  $\mu\text{M}$ ) did not affect the viability of eukaryotic cells or bacteria (Fig. S4B). Over this concentration range, MBX3132 decreased association and invasion in a dose-dependent manner. Association of SL1344 was significantly decreased by MBX3132 at concentrations as low as 0.78  $\mu\text{g/ml}$  (1.56  $\mu\text{M}$ ); however, invasion was not significantly decreased until 6.20  $\mu\text{g/ml}$  (12.5  $\mu\text{M}$ ) (Fig. 6B). These results confirmed that inhibition of efflux activity decreased the ability of SL1344 to infect human epithelial cells.

**RNA-seq reveals downregulation of SPI genes and upregulation of stress response and flagellar motility genes.** To understand the physiological changes underpinning the loss of virulence in the D408A mutant, changes in gene expression in the mutant compared with SL1344 were assessed by sequencing RNA isolated from each strain. This experiment was carried out in minimal medium as it simulates the nutrient availability conditions inside host cells (26). Quantitative reverse transcriptase PCR (qRT-PCR) confirmed the RNA-seq data (Fig. S5). Compared to the transcriptome of SL1344, 14% of the genome of the mutant was differentially transcribed; the majority of these genes were involved in metabolic processes (Fig. S6). Transcription of some of



**FIG 5** Infection assays with SL1344 and its *acrB* mutants in J774 murine macrophages. Association (2 h postinfection) and uptake (4 h postinfection) of  $\Delta acrB$  and AcrB D408A mutants into J774 murine macrophages were compared to those of the parental wild-type strain. An asterisk denotes a significant difference of  $P < 0.05$  between two groups, compared by Student's *t* test with Welch's correction.



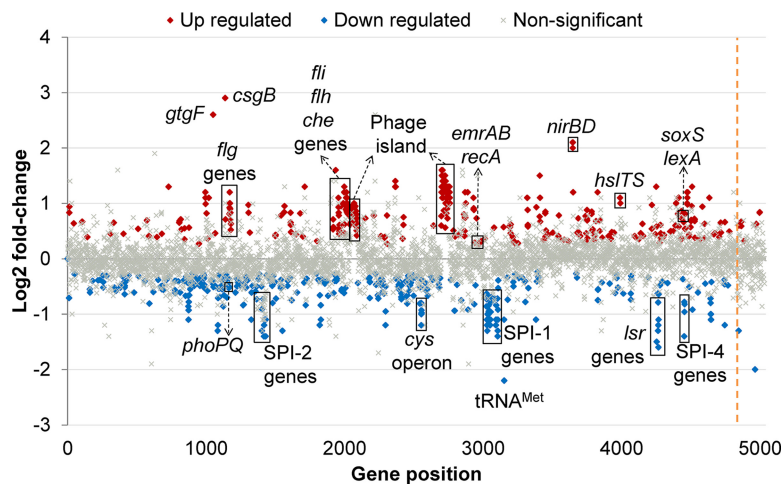
**FIG 6** Effect of PAβN (A) and MBX3132 (B) on association and invasion of *S. Typhimurium* SL1344 into INT-407 cells. PAβN and MBX3132 were dissolved in sterile distilled water and dimethyl sulfoxide, respectively. Final concentrations were adjusted in inoculation medium. The 0-μg/ml concentration of MBX3132 contains 1% dimethyl sulfoxide. Association and invasion were measured at 2 h and 4 h postinfection, respectively. Percentages relative to 0 μg/ml are indicated in the figure. An asterisk denotes a significant difference of  $P < 0.05$  between two groups, compared by Student's *t* test with Welch's correction.

the major outer membrane porins, such as those encoded by *ompA* and *ompF*, was downregulated. Interestingly, the transcription levels of other RND efflux pump genes were not significantly changed.

Levels of expression of several tRNAs were significantly different in the mutant from SL1344. The most downregulated gene was a methionine tRNA ( $\text{tRNA}^{\text{Met}}$ ) (log fold change of  $-2.2$  compared to wild type). There was also downregulation of the *lsr* quorum sensing transporter operon and the *phoPQ* two-component system. Upregulation of two entire phage islands and several phage-related genes was also observed. The *gtgF* phage gene and *csgB* curli gene were the most upregulated genes (log fold changes of 2.6 and 2.9, respectively) (Fig. 7).

Cluster of orthologous gene (COG) analysis revealed that most of the genes involved in carbohydrate, amino acid, lipid, and nucleotide transport and metabolism were downregulated (Fig. S7). The majority of the genes in the "intracellular trafficking, secretion and vesicular transport" class were also downregulated. This COG class includes SPI genes, which we previously reported as being downregulated in an *acrB::aph* mutant (14). All the differentially transcribed motility-related genes were upregulated, including the *fli* and *flh* operons and several *che* genes. In fact, cell motility was the only COG class for which all the genes were upregulated (Fig. S7).





**FIG 7** Transcriptional landscape of the SL1344 AcrB D408A mutant. The transcriptome of the mutant was compared to that of parental SL1344. Significantly upregulated genes in the mutant are marked in red, and significantly downregulated genes are marked in blue. Gray crosses denote genes with no significant changes between the two strains. The dashed orange line indicates the end of the chromosomal genes and the start of the plasmid genes.

Interestingly, the “posttranslational modification, protein turnover, chaperones” and “replication, recombination and repair” classes were mainly upregulated. These classes comprise genes encoding heat shock proteins (HSPs) and DNA polymerases and topoisomerases. Surprisingly, the SOS system regulators *lexA* and *recA* were also upregulated, but none of the SOS system effectors were significantly transcribed.

**The AcrB D408A substitution increases swimming motility in minimal medium.**

Our RNA-seq data suggested that the D408A mutant has increased motility. To test this hypothesis, motility assays in minimal medium supplemented with 0.3% agar were carried out. Swimming of an  $\Delta$ *acrB* mutant and the D408A mutant was compared against the parental SL1344 strain. The  $\Delta$ *acrB* and the D408A mutants swam significantly more than the parental strain (Fig. S8).

**Homologous RND efflux pumps are not upregulated in the D408A mutant.**

Previous studies have shown that *acrD* and *acrF* genes encoding homologous RND pumps in enterobacteria were significantly upregulated in an  $\Delta$ *acrB* mutant, by qRT-PCR. These genes were not significantly transcribed in the D408A mutant; therefore, qRT-PCR was carried out to confirm their transcript levels. Either *acrD* or *acrF* was significantly upregulated in the D408A mutant (Table 2).

**DISCUSSION**

We focused on investigating the biological function of the AcrB MDR efflux pump and the impact of loss of efflux function on the virulence of *Salmonella* Typhimurium. Previous studies have shown that *acrB* insertional inactivated/deleted mutants of *Salmonella* are less virulent than the wild-type strain (13, 14, 27). However, whether this

**TABLE 2** Transcription of *acrBDF* pumps and *ramA* in the D408A mutant compared with  $\Delta$ *acrB* mutant

Strain	Fold change in transcription of gene <sup>a</sup> :			
	<i>acrB</i> <sup>a</sup>	<i>acrD</i> <sup>a</sup>	<i>acrF</i> <sup>a</sup>	<i>ramA</i> <sup>b</sup>
Wild type	1.0	1.0	1.0	1.0
$\Delta$ <i>acrB</i> mutant <sup>a</sup>	— <sup>c</sup>	13.4 <sup>c*</sup>	16.0 <sup>c*</sup>	5.2 <sup>*</sup>
AcrB D408A	1.3	1.2	1.0	1.0

<sup>a</sup>Data from qRT-PCR.

<sup>b</sup>Data from *gfp* promoter fusion reporter.

<sup>c</sup>Data taken from reference 54.

<sup>d</sup>An asterisk denotes significantly increased transcription ( $P < 0.05$ ).

phenotype was due to loss of a large integral membrane protein or to loss of efflux function has remained an ongoing debate. Several other authors have also observed loss of virulence in RND efflux pump deletion mutants across a range of bacterial species, but none have shown evidence of the phenotype being a consequence of loss of efflux function (13, 15–18, 20, 28, 29). Thus, we constructed an AcrB D408A loss-of-efflux-function mutant with the gene *in situ* in the chromosome and which expressed AcrB at native levels. Five residues are essential for proton translocation by the AcrB transporter, including D408 (30). D408 is crucial for proton translocation as intrinsic resistance to AcrB substrates is lost when this residue is replaced by alanine or asparagine but not by glutamine (31). The D408A substitution locks AcrB in one conformation, rendering it incapable of efflux (30).

The *Salmonella* AcrB D408A mutant was less virulent in a mouse model, where mice infected with the mutant had a better disease outcome than those infected with the wild type (which correlated with data for a deletion mutant [32]) and had lower bacterial loads in spleen and liver. The loss of virulence was also observed in a *G. mellonella* model and in cultured intestinal epithelial cells and macrophages, a finding which has been previously reported for the deletion mutant (13). It was also shown that SL1344 lost its ability to associate with and invade intestinal epithelial cells as the concentration of each of two EPIs increased, further indicating that loss of virulence was due to loss of AcrB efflux function.

To investigate the role that AcrB plays in virulence, we compared the transcriptome of the mutant with that of the wild-type strain. Results identified two possible mechanisms (not mutually exclusive): (i) decreased production of virulence effectors and (ii) increased stress responses.

SPI-1, -2, and -4 (type 3 secretion system virulence effectors and apparatus genes) were significantly downregulated in the D408A mutant. These are required by *S. Typhimurium* to invade and survive in the host cells, which will result in a systemic infection in mice. Infection in mice starts when *S. Typhimurium* crosses the enteric barrier by invading M cells and intestinal epithelial cells, followed by invasion of macrophages and dissemination via the MPS. *S. Typhimurium* requires SPI-1 and SPI-4 to invade polarized epithelial cells and only SPI-1 to invade nonpolarized cells (33). Therefore, the downregulation of SPI-1 and SPI-4 in the D408A mutant could account for the low levels of invasion into intestinal epithelial cells. In contrast, invasion of macrophages occurs primarily by phagocytosis (34). Survival inside macrophages depends largely on expression of SPI-2 effectors, which are regulated by the PhoPQ two-component system (35). The downregulation of *phoPQ* and SPI-2 genes leads to decreased survival inside macrophages and neutrophils (36). In the D408A mutant, *phoPQ* and SPI-2 were significantly downregulated, which is likely to be the cause of the decreased virulence of the mutant in macrophages. The accrued downregulation of all these virulence factors is likely to be the cause of attenuation of virulence observed in the mouse model.

Alongside SPI genes and *phoPQ*, we also observed decreased transcription of quorum sensing (QS) transporter genes *IsrACDBK* and the operon repressor *IsrR* in the D408A mutant. QS is used by multiple bacterial species to coordinate the expression of virulence factors. The relationship between QS and virulence in *Salmonella* has not been completely elucidated (37, 38); however, it has been suggested that *IsrR* controls expression of SPI-related genes (38). Therefore, it is possible that the downregulation of SPI genes is related to the downregulation of *Isr* genes.

All flagellar synthesis genes in the D408A mutant were significantly upregulated. Flagella play a role in motility and early stages of invasion (39–41). The upregulation of flagellar genes in the D408A mutant translated into a hypermotile phenotype in the D408A mutant, which may be to compensate for the downregulation of SPI genes in the initial association phase of the infection.

While virulence-related genes were downregulated in the D408A mutant, general stress response mechanisms were upregulated, including phage islands, the SOS response modulators *recA* and *lexA*, and heat shock proteins (HSPs). Phage islands

remain as prophages but become active when the bacterium experiences stress (42). *gtgF*, the second most highly upregulated gene in the D408A mutant, encodes the Gifsy-2 prophage DNA-damage-inducible-protein-I-like (DinI-like) protein (43). The function of prophage DinI-like proteins is still unclear (44, 45), but it has been suggested that they have a role in activation of the prophage under stress conditions (45, 46).

The SOS system is induced when damage to DNA occurs, producing single-stranded DNA. This attracts RecA, and the DNA-RecA complex facilitates expression of the SOS system by exposing the cleavage site of LexA, the main SOS system inhibitor (47). The upregulation of *recA* and *lexA* in the D408A mutant suggests DNA damage. Compounds and environmental conditions known to induce formation of single-stranded DNA include reactive oxygen species and metabolic by-products (48). These are often proteotoxic, causing proteins to unfold, which signals the overexpression of HSP (49). We speculate that the loss of function of AcrB leads to accumulation of toxic metabolites in the cytoplasm and periplasm, which results in DNA damage and protein unfolding. Consequently, this leads to upregulation of the SOS regulators and HSP. Nonetheless, it is important to note that transcription levels of the SOS effectors were not significantly changed; this suggests that the DNA damage in the D408A mutant was not sufficiently extensive to activate their transcription. Furthermore, since the total RNA samples of the wild-type strain and the D408A mutant were prepared at the same time and under the same conditions, it is unlikely that the upregulation of HSP and of DNA repair mechanisms in the mutant is an artifact of the experimental conditions. Therefore, it is most likely due to changes in the physiological state of the mutant.

We also observed upregulation of the *soxS* transcriptional regulator; this has been reported previously in an *E. coli*  $\Delta$ *acrB* mutant. This was shown to be a response to intracellular accumulation of metabolites in the mutant (50). Therefore, the upregulation of *soxS* in the D408A mutant is likely to be a response to accumulation of metabolites in the bacterial cell. The accumulation of toxic metabolites in the D408A mutant is further supported by the upregulation of the *emrAB* MDR efflux pump. Similarly to AcrAB, EmrAB associates with TolC to export a variety of antibiotics and other compounds such as novobiocin, nalidixic acid, and free fatty acids, which are normally effluxed by AcrAB (51, 52). This suggests that the upregulation of *emrAB* is in response to the accumulation of toxic metabolites normally effluxed via AcrB in the D408A mutant.

We have previously reported that *ramA* and homologous RND genes *acrD* and *acrF* were significantly upregulated in an  $\Delta$ *acrB* mutant (53–55). However, we did not observe upregulation of these genes in the D408A mutant. Therefore, we hypothesize that the upregulation of *ramA* and homologous RND efflux pump genes in the deletion mutant was a result of loss of the AcrB protein. The differences between the transcriptome of the D408A mutant and that of the  $\Delta$ *acrB* mutant are important and lead us to propose that deletion mutants are unsuitable for studying the physiological role of membrane transporters.

We further speculate that the purpose of the downregulation of outer membrane porins in the D408A mutant is to prevent potential noxious compounds from entering the bacterium. Following this, the downregulation of tRNAs and general metabolic processes could be a defense mechanism to avoid further damage to the cells, as cells with high metabolic activity are more likely to be damaged. We propose that *Salmonella* sacrifices its virulence, a nonessential function, in order to relocate energy to essential functions such as replication, in response to the stress caused by the intracellular accumulation of toxic metabolites.

In conclusion, we present compelling evidence that the loss of efflux function of AcrB causes loss of virulence in *S. Typhimurium*. We also present evidence suggesting that the downregulation of virulence factors is an adaptation mechanism to cope with stress, which is caused by accumulation of toxic metabolites.

## MATERIALS AND METHODS

**Bacterial strains, plasmids, and construction of the *S. Typhimurium* AcrB D408A chromosomal mutant.** All *Salmonella* mutants used were derived from *S. Typhimurium* SL1344, a well-characterized representative of this serovar. Further information about the strains and plasmids can be found in Text S1 in the supplemental material. A modified version of the method described by Kim et al. (56) was used for the construction of the chromosomal mutant. Primers are listed in Table S1. The kanamycin selection marker was amplified from plasmid pT2SK, with primers MR and MF. The fragments containing the D408A mutation in AcrB were amplified from a previously constructed plasmid. The mutation cassette was assembled as previously described (56). The mutation cassette was inserted into the chromosome of *S. Typhimurium* SL1344 using pSIM18 hygromycin selection (57). Recombinants were selected by plating onto LB agar with 50  $\mu$ g/ml of kanamycin. Excision of the kanamycin selection cassette from the chromosome was carried out with pACBSCE (58). Mutant candidates were screened by PCR for loss of the selection marker, and PCR amplimers were sequenced to confirm correct insertion of the mutation.

The mutant strain was sent to Microbes NG for WGS. Paired-end sequencing was carried out on the Illumina HiSeq platform. The reads were mapped to the *S. Typhimurium* SL1344 reference genome from EnsemblBacteria (assembly GCA\_00210855.2) using Bowtie2. Single nucleotide polymorphism (SNP) analysis was carried out with Mpileup, and candidate SNPs were verified using Artemis (Sanger Institute, United Kingdom).

**Western blot analysis.** Protein samples from *S. Typhimurium* SL1344, its  $\Delta$ acrB mutant, and the AcrB D408A mutant were prepared by sonication of whole cells. Protein concentration was quantified by Qubit protein assay. Ten micrograms of protein sample was used for blotting as described in reference 59.

**Growth kinetics and susceptibility of strains to AcrB substrates.** Growth kinetics were measured using a FLUOstar Optima microplate reader. The optical density at 600 nm ( $OD_{600}$ ) was measured every 5 min for 18 h. The MICs of AcrB substrates were determined as recommended by the European Committee on Antimicrobial Susceptibility Testing (EUCAST) (60). *Escherichia coli* ATCC 25922 was used as the control strain.

**H33342 accumulation and ethidium bromide efflux assay.** The H33342 accumulation and ethidium bromide efflux assays were carried out as previously described (61). Cultures grown to an  $OD_{600}$  of 0.6 were aliquoted into a black 96-well plate. Fluorescence was measured every minute for 100 min in a FLUOstar Optima microplate reader. Initial fluorescence of the cultures was measured for 5 min before the injection of H33342 (2.5  $\mu$ M) or glucose (25 mM), respectively. For the ethidium bromide efflux assay, cultures were preloaded with 50  $\mu$ g/ml of ethidium bromide and 100  $\mu$ M carbonyl cyanide *m*-chlorophenylhydrazone (CCCP).

**Tissue culture.** INT-407 embryonic intestinal epithelial cells were cultured under the same conditions as in reference 62. Caco2 intestinal epithelial cells and J774 murine macrophages were cultured in Dulbecco's modified Eagle's medium (DMEM) with the same supplements used for INT-407 cells. Infection assays were carried out as described previously (13, 62, 63). For INT-407 and J774 cells,  $2 \times 10^5$  cells/ml were seeded in duplicate into 24-well plates (Costar, USA) 48 h prior to an infection assay. For assays with polarized Caco2 cells,  $1.8 \times 10^5$  cells/ml were polarized by growth for 14 days, with medium changed every 48 h.

**Galleria mellonella experiments.** A virulence comparison was performed between isolates L354 and L1804. In brief, overnight (18-h) LB broth cultures of each strain were washed in phosphate-buffered saline (PBS) before being serially diluted in PBS. CFU were determined by plating the dilutions on nutrient agar and incubating them at 37°C for 24 h. Ten *G. mellonella* larvae were infected as previously described (64). Larvae were incubated at 37°C and scored for survival (live/dead) at 0, 24, 48, 72, and 96 h postinfection. Larvae were also scored for melanization over 96 h, based on a reversed scoring of that by Tsai et al. (65), whereby a score of 4 indicated total melanization of the larvae, 2 equaled melanin spots over the larvae, 1 equaled discoloration of the tail, and a score of 0 equaled no melanization. Assays were performed in triplicate.

**Mouse experiments.** Six- to 8-week-old BALB/c mice were used to assess the virulence of the D408A mutant. Four groups of five or seven mice each were used for survival or systemic dissemination studies, respectively. *S. Typhimurium* SL1344 or its AcrB D408A mutant was inoculated orally or intraperitoneally. The oral infection was carried out with  $5 \times 10^7$  CFU/ml as described in reference 66, whereas the intraperitoneal inoculation was carried out with  $3 \times 10^3$  CFU/ml as described in reference 67. Mice were sacrificed 5 days postinfection, and spleen and liver were harvested to assess bacterial load by viable count. Survival experiments were carried out for 17 days. The research protocols, approved by the Service for Biotechnology and Animal Welfare of the Istituto Superiore di Sanità and authorized by the Italian Ministry of Health, adhered to the guidelines contained in Italian Legislative Decree 116/92, based on European Directive 86/609/EEC on Laboratory Animal Protection (decree numbers 84/12.B and 255/2012.B).

**RNA extraction, sequencing, and bioinformatics analyses.** Three biological replicates per strain were grown to an  $OD_{600}$  of 0.6 in morpholinepropanesulfonic acid (MOPS) minimal medium supplemented with 2.6 mM histidine. Total RNA was extracted using the SV total RNA isolation system (Promega, USA). The concentration of RNA and DNA in the samples was quantified by the Qubit fluorometric quantitation system. Where required, further DNase treatment was carried out using the Turbo DNA-free kit (Thermo Fisher Scientific, United Kingdom). A NanoDrop spectrophotometer and a Bioanalyzer instrument assessed purity and integrity of RNA samples, respectively. Samples were sent for RNA sequencing to the Beijing Genomics Institute (BGI; Hong Kong). Paired-end sequencing was carried

out by the Illumina HiSeq 4000 system. Bioinformatics analyses were carried out exactly as described previously (68). The reference genomes were obtained from EBI (accession numbers [FQ312003](#), [HE654724](#), [HE654725](#), and [HE654726](#)).

**Swimming motility assays.** Semisolid agar motility assays were carried out as described in reference 63. The inoculum was adjusted to an OD<sub>600</sub> of 0.5 and stabbed into MOPS with 0.3% agar. Plates were incubated for 24 h at 37°C. The area of motility was measured with ImageJ.

**qRT-PCR and *gfp* reporter assays.** cDNA was synthesized from RNA samples, using Superscript II. cDNA was aliquoted and stored at −20°C until use. qRT-PCR was carried out with IQ SYBR green Supermix (Bio-Rad, United Kingdom) according to the instructions from the manufacturer. Differences in expression were calculated by the threshold cycle ( $\Delta\Delta C_T$ ) method as described previously (54). 16S rRNA and *gyrB* were used as housekeeping genes for data normalization. The *ramA-gfp* reporter plasmid was obtained from reference 53. Plasmid was inserted into the AcrB D408A mutant by electroporation. Reporter induction assays were carried out as previously described (53).

**Statistical analyses.** All experiments were repeated at least three times. Where data were represented graphically, the mean from all the experiments was plotted, except for mouse experiments, where the median was plotted. To calculate statistical significance of survival curves, a two-tailed log rank (Mantel-Cox) test was used. A two-tailed Mann-Whitney U test was used for mouse experiments, and a Student *t* test was used for all other experiments. Welch's correction was applied to *t* tests when data sets had unequal variances. A *P* value of <0.05 was used to indicate statistical significance. This is indicated in the text as "significant."

**Accession number(s).** The paired-end sequencing data are available in ArrayExpress (accession no. E-MTAB-5573).

## SUPPLEMENTAL MATERIAL

Supplemental material for this article may be found at <https://doi.org/10.1128/mBio.00968-17>.

**TEXT S1**, DOCX file, 0.02 MB.

**FIG S1**, TIF file, 3.4 MB.

**FIG S2**, TIF file, 0.5 MB.

**FIG S3**, TIF file, 0.4 MB.

**FIG S4**, TIF file, 0.4 MB.

**FIG S5**, TIF file, 0.3 MB.

**FIG S6**, TIF file, 2.9 MB.

**FIG S7**, TIF file, 1.9 MB.

**FIG S8**, TIF file, 0.3 MB.

**TABLE S1**, DOCX file, 0.01 MB.

## ACKNOWLEDGMENTS

We thank Georgina Lloyd and Michelle Buckner for reading and providing comments on an early version of the manuscript and Helen Zgurskaya for donating the anti-AcrB antibody used in Western blot analysis.

Xuan Wang-Kan was supported by Consejo Nacional de Ciencia y Tecnología (CONACyT), Mexico. Genome sequencing was provided by Microbes NG (<http://www.microbesng.uk>), which is supported by the BBSRC (grant number BB/L024209/1). The funders had no role in study design, data collection and interpretation, or the decision to submit the work for publication.

## REFERENCES

- World Health Organization. September 2016. Antimicrobial resistance. World Health Organization, Geneva, Switzerland. <http://www.who.int/mediacentre/factsheets/fs194/en/>.
- Cosgrove SE. 2006. The relationship between antimicrobial resistance and patient outcomes: mortality, length of hospital stay, and health care costs. *Clin Infect Dis* 42:S82–S89. <https://doi.org/10.1086/499406>.
- Beceiro A, Tomás M, Bou G. 2013. Antimicrobial resistance and virulence: a successful or deleterious association in the bacterial world? *Clin Microbiol Rev* 26:185–230. <https://doi.org/10.1128/CMR.00059-12>.
- Guillard T, Pons S, Roux D, Pier GB, Skurnik D. 2016. Antibiotic resistance and virulence: understanding the link and its consequences for prophylaxis and therapy. *Bioessays* 38:682–693. <https://doi.org/10.1002/bies.201500180>.
- Blair JM, Webber MA, Baylay AJ, Ogbolu DO, Piddock LJ. 2015. Molecular mechanisms of antibiotic resistance. *Nat Rev Microbiol* 13:42–51. <https://doi.org/10.1038/nrmicro3380>.
- Piddock LJ, Whale K, Wise R. 1990. Quinolone resistance in *Salmonella*: clinical experience. *Lancet* 335:1459. [https://doi.org/10.1016/0140-6736\(90\)91484-R](https://doi.org/10.1016/0140-6736(90)91484-R).
- Blair JM, Bavro VN, Ricci V, Modi N, Cacciottolo P, Kleinekathöfer U, Ruggerone P, Vargiu AV, Baylay AJ, Smith HE, Brandon Y, Galloway D, Piddock LJ. 2015. AcrB drug-binding pocket substitution confers clinically relevant resistance and altered substrate specificity. *Proc Natl Acad Sci U S A* 112:3511–3516. <https://doi.org/10.1073/pnas.1419939112>.
- Du D, van Veen HW, Luisi BF. 2015. Assembly and operation of bacterial tripartite multidrug efflux pumps. *Trends Microbiol* 23:311–319. <https://doi.org/10.1016/j.tim.2015.01.010>.
- Du D, Voss J, Wang Z, Chiu W, Luisi BF. 2015. The pseudo-atomic structure of an RND-type tripartite multidrug efflux pump. *Biol Chem* 396:1073–1082. <https://doi.org/10.1515/hsz-2015-0118>.
- Seeger MA, Diederichs K, Eicher T, Brandstätter L, Schiefner A, Verrey F, Pos KM. 2008. The AcrB efflux pump: conformational cycling and peri-



- stalsis lead to multidrug resistance. *Curr Drug Targets* 9:729–749. <https://doi.org/10.2174/138945008785747789>.
11. Eicher T, Seeger MA, Anselmi C, Zhou W, Brandstätter L, Verrey F, Diederichs K, Faraldo-Gómez JD, Pos KM. 2014. Coupling of remote alternating-access transport mechanisms for protons and substrates in the multidrug efflux pump AcrB. *Elife* 3:e03145. <https://doi.org/10.7554/eLife.03145>.
  12. Kinana AD, Vargiu AV, Nikaido H. 2016. Effect of site-directed mutations in multidrug efflux pump AcrB examined by quantitative efflux assays. *Biochem Biophys Res Commun* 480:552–557. <https://doi.org/10.1016/j.bbrc.2016.10.083>.
  13. Buckley AM, Webber MA, Cooles S, Randall LP, La Ragione RM, Woodward MJ, Piddock LJ. 2006. The AcrAB-TolC efflux system of *Salmonella enterica* serovar Typhimurium plays a role in pathogenesis. *Cell Microbiol* 8:847–856. <https://doi.org/10.1111/j.1462-5822.2005.00671.x>.
  14. Webber MA, Bailey AM, Blair JM, Morgan E, Stevens MP, Hinton JC, Ivens A, Wain J, Piddock LJ. 2009. The global consequence of disruption of the AcrAB-TolC efflux pump in *Salmonella enterica* includes reduced expression of SPI-1 and other attributes required to infect the host. *J Bacteriol* 191:4276–4285. <https://doi.org/10.1128/JB.00363-09>.
  15. Pérez A, Poza M, Fernández A, Fernández MDC, Mallo S, Merino M, Rumbó-Feal S, Cabral MP, Bou G. 2012. Involvement of the AcrAB-TolC efflux pump in the resistance, fitness, and virulence of *Enterobacter cloacae*. *Antimicrob Agents Chemother* 56:2084–2090. <https://doi.org/10.1128/AAC.05509-11>.
  16. Padilla E, Llobet E, Doménech-Sánchez A, Martínez-Martínez L, Bengoechea JA, Alberti S. 2010. *Klebsiella pneumoniae* AcrAB efflux pump contributes to antimicrobial resistance and virulence. *Antimicrob Agents Chemother* 54:177–183. <https://doi.org/10.1128/AAC.00715-09>.
  17. Spaniol V, Bernhard S, Aebi C. 2015. *Moraxella catarrhalis* AcrAB-OprM efflux pump contributes to antimicrobial resistance and is enhanced during cold shock response. *Antimicrob Agents Chemother* 59:1886–1894. <https://doi.org/10.1128/AAC.03727-14>.
  18. Bina XR, Provenzano D, Nguyen N, Bina JE. 2008. *Vibrio cholerae* RND family efflux systems are required for antimicrobial resistance, optimal virulence factor production, and colonization of the infant mouse small intestine. *Infect Immun* 76:3595–3605. <https://doi.org/10.1128/IAI.01620-07>.
  19. Alcalde-Rico M, Hernando-Amado S, Blanco P, Martínez JL. 2016. Multidrug efflux pumps at the crossroad between antibiotic resistance and bacterial virulence. *Front Microbiol* 7:1483. <https://doi.org/10.3389/fmicb.2016.01483>.
  20. Jerse AE, Sharma ND, Simms AN, Crow ET, Snyder LA, Shafer WM. 2003. A gonococcal efflux pump system enhances bacterial survival in a female mouse model of genital tract infection. *Infect Immun* 71:5576–5582. <https://doi.org/10.1128/IAI.71.10.5576-5582.2003>.
  21. Burse A, Weingart H, Ullrich MS. 2004. The phytoalexin-inducible multidrug efflux pump AcrAB contributes to virulence in the fire blight pathogen, *Erwinia amylovora*. *Mol Plant Microbe Interact* 17:43–54. <https://doi.org/10.1094/MPMI.2004.17.1.43>.
  22. Blair JM, Piddock LJ. 2016. How to measure export via bacterial multidrug resistance efflux pumps. *mBio* 7:e00840-16. <https://doi.org/10.1128/mBio.00840-16>.
  23. Olmsted J, III, Kearns DR. 1977. Mechanism of ethidium bromide fluorescence enhancement on binding to nucleic acids. *Biochemistry* 16:3647–3654. <https://doi.org/10.1021/bi00635a022>.
  24. Sjuts H, Vargiu AV, Kwasny SM, Nguyen ST, Kim HS, Ding X, Ornik AR, Ruggerone P, Bowlin TL, Nikaido H, Pos KM, Opperman TJ. 2016. Molecular basis for inhibition of AcrB multidrug efflux pump by novel and powerful pyranopyridine derivatives. *Proc Natl Acad Sci U S A* 113:3509–3514. <https://doi.org/10.1073/pnas.1602472113>.
  25. Lomovskaya O, Warren MS, Lee A, Galazzo J, Fronko R, Lee M, Blais J, Cho D, Chamberland S, Renau T, Leger R, Hecker S, Watkins W, Hoshino K, Ishida H, Lee VJ. 2001. Identification and characterization of inhibitors of multidrug resistance efflux pumps in *Pseudomonas aeruginosa*: novel agents for combination therapy. *Antimicrob Agents Chemother* 45:105–116. <https://doi.org/10.1128/AAC.45.1.105-116.2001>.
  26. Blair JM, Richmond GE, Bailey AM, Ivens A, Piddock LJ. 2013. Choice of bacterial growth medium alters the transcriptome and phenotype of *Salmonella enterica* serovar Typhimurium. *PLoS One* 8:e63912. <https://doi.org/10.1371/journal.pone.0063912>.
  27. Piddock LJ. 2006. Multidrug-resistance efflux pumps—not just for resistance. *Nat Rev Microbiol* 4:629–636. <https://doi.org/10.1038/nrmicro1464>.
  28. Veal WL, Nicholas RA, Shafer WM. 2002. Overexpression of the MtrC-MtrD-MtrE efflux pump due to an *mtrR* mutation is required for chromosomally mediated penicillin resistance in *Neisseria gonorrhoeae*. *J Bacteriol* 184:5619–5624. <https://doi.org/10.1128/JB.184.20.5619-5624.2002>.
  29. Wieczorek P, Sacha P, Hauschild T, Zórawski M, Krawczyk M, Tryniszewska E. 2008. Multidrug resistant *Acinetobacter baumannii*—the role of AdeABC (RND family) efflux pump in resistance to antibiotics. *Folia Histochem Cytobiol* 46:257–267. <https://doi.org/10.2478/v10042-008-0056-x>.
  30. Su CC, Li M, Gu R, Takatsuka Y, McDermott G, Nikaido H, Yu EW. 2006. Conformation of the AcrB multidrug efflux pump in mutants of the putative proton relay pathway. *J Bacteriol* 188:7290–7296. <https://doi.org/10.1128/JB.00684-06>.
  31. Seeger MA, von Ballmoos C, Verrey F, Pos KM. 2009. Crucial role of Asp408 in the proton translocation pathway of multidrug transporter AcrB: evidence from site-directed mutagenesis and carbodiimide labeling. *Biochemistry* 48:5801–5812. <https://doi.org/10.1021/bi900446j>.
  32. Nishino K, Latifi T, Groisman EA. 2006. Virulence and drug resistance roles of multidrug efflux systems of *Salmonella enterica* serovar Typhimurium. *Mol Microbiol* 59:126–141. <https://doi.org/10.1111/j.1365-2958.2005.04940.x>.
  33. Lorkowski M, Felipe-López A, Danzer CA, Hansmeier N, Hensel M. 2014. *Salmonella enterica* invasion of polarized epithelial cells is a highly cooperative effort. *Infect Immun* 82:2657–2667. <https://doi.org/10.1128/IAI.00023-14>.
  34. Gog JR, Murcia A, Osterman N, Restif O, McKinley TJ, Sheppard M, Achouri S, Wei B, Mastroeni P, Wood JLN, Maskell DJ, Cicuta P, Bryant CE. 2012. Dynamics of *Salmonella* infection of macrophages at the single cell level. *J R Soc Interface* 9:2696–2707. <https://doi.org/10.1098/rsif.2012.0163>.
  35. Xu X, Hensel M. 2010. Systematic analysis of the SsrAB virulon of *Salmonella enterica*. *Infect Immun* 78:49–58. <https://doi.org/10.1128/IAI.00931-09>.
  36. Porcheron G, Schouler C, Dozois CM. 2016. Survival games at the dinner table: regulation of enterobacterial virulence through nutrient sensing and acquisition. *Curr Opin Microbiol* 30:98–106. <https://doi.org/10.1016/j.mib.2016.01.008>.
  37. Perrett CA, Karavolos MH, Humphrey S, Mastroeni P, Martínez-Argudo I, Spencer H, Bulmer D, Winzer K, McGhie E, Koronakis V, Williams P, Khan CM, Jepson MA. 2009. LuxS-based quorum sensing does not affect the ability of *Salmonella enterica* serovar Typhimurium to express the SPI-1 type 3 secretion system, induce membrane ruffles, or invade epithelial cells. *J Bacteriol* 191:7253–7259. <https://doi.org/10.1128/JB.00727-09>.
  38. Choi J, Shin D, Kim M, Park J, Lim S, Ryu S. 2012. LsrR-mediated quorum sensing controls invasiveness of *Salmonella typhimurium* by regulating SPI-1 and flagella genes. *PLoS One* 7:e37059. <https://doi.org/10.1371/journal.pone.0037059>.
  39. Friedlander RS, Vlamakis H, Kim P, Khan M, Kolter R, Aizenberg J. 2013. Bacterial flagella explore microscale hummocks and hollows to increase adhesion. *Proc Natl Acad Sci U S A* 110:5624–5629. <https://doi.org/10.1073/pnas.1219662110>.
  40. Jones BD, Lee CA, Falkow S. 1992. Invasion by *Salmonella typhimurium* is affected by the direction of flagellar rotation. *Infect Immun* 60:2475–2480.
  41. Misselwitz B, Barrett N, Kreibich S, Vonaesch P, Andrichschke D, Rout S, Weidner K, Sormaz M, Songhet P, Horvath P, Chabria M, Vogel V, Spori DM, Jenny P, Hardt WD. 2012. Near surface swimming of *Salmonella typhimurium* explains target-site selection and cooperative invasion. *PLoS Pathog* 8:e1002810. <https://doi.org/10.1371/journal.ppat.1002810>.
  42. Kelley WL. 2006. Lex marks the spot: the virulent side of SOS and a closer look at the LexA regulon. *Mol Microbiol* 62:1228–1238. <https://doi.org/10.1111/j.1365-2958.2006.05444.x>.
  43. UniProt Consortium. 2015. UniProt: a hub for protein information. *Nucleic Acids Res* 43:D204–D212. <https://doi.org/10.1093/nar/gku989>.
  44. Casjens SR, Gilcrease EB, Huang WM, Bunney KL, Pedulla ML, Ford ME, Houtz JM, Hatfull GF, Hendrix RW. 2004. The pKO2 linear plasmid prophage of *Klebsiella oxytoca*. *J Bacteriol* 186:1818–1832. <https://doi.org/10.1128/JB.186.6.1818-1832.2004>.
  45. Lemire S, Figueroa-Bossi N, Bossi L. 2011. Bacteriophage crosstalk: coordination of prophage induction by *trans*-acting antirepressors. *PLoS Genet* 7:e1002149. <https://doi.org/10.1371/journal.pgen.1002149>.
  46. Mardanov AV, Ravin NV. 2007. The antirepressor needed for induction of linear plasmid-prophage N15 belongs to the SOS regulon. *J Bacteriol* 189:6333–6338. <https://doi.org/10.1128/JB.00599-07>.
  47. Baharoglu Z, Mazel D. 2014. SOS, the formidable strategy of bacteria



- against aggressions. *FEMS Microbiol Rev* 38:1126–1145. <https://doi.org/10.1111/1574-6976.12077>.
48. Žgur-Bertok D. 2013. DNA damage repair and bacterial pathogens. *PLoS Pathog* 9:e1003711. <https://doi.org/10.1371/journal.ppat.1003711>.
  49. Gophna U, Ron EZ. 2003. Virulence and the heat shock response. *Int J Med Microbiol* 292:453–461. <https://doi.org/10.1078/1438-4221-00230>.
  50. Ruiz C, Levy SB. 2014. Regulation of *acrAB* expression by cellular metabolites in *Escherichia coli*. *J Antimicrob Chemother* 69:390–399. <https://doi.org/10.1093/jac/dkt352>.
  51. Li XZ, Nikaido H. 2009. Efflux-mediated drug resistance in bacteria: an update. *Drugs* 69:1555–1623.
  52. Lennen RM, Politz MG, Kruziki MA, Pfleger BF. 2013. Identification of transport proteins involved in free fatty acid efflux in *Escherichia coli*. *J Bacteriol* 195:135–144. <https://doi.org/10.1128/JB.01477-12>.
  53. Lawler AJ, Ricci V, Busby SJ, Piddock LJ. 2013. Genetic inactivation of *acrAB* or inhibition of efflux induces expression of *ramA*. *J Antimicrob Chemother* 68:1551–1557. <https://doi.org/10.1093/jac/dkt069>.
  54. Blair JM, Smith HE, Ricci V, Lawler AJ, Thompson LJ, Piddock LJ. 2015. Expression of homologous RND efflux pump genes is dependent upon *AcrB* expression: implications for efflux and virulence inhibitor design. *J Antimicrob Chemother* 70:424–431. <https://doi.org/10.1093/jac/dku380>.
  55. Eaves DJ, Ricci V, Piddock LJ. 2004. Expression of *acrB*, *acrF*, *acrD*, *marA*, and *soxS* in *Salmonella enterica* serovar Typhimurium: role in multiple antibiotic resistance. *Antimicrob Agents Chemother* 48:1145–1150. <https://doi.org/10.1128/AAC.48.4.1145-1150.2004>.
  56. Kim J, Webb AM, Kershner JP, Blaskowski S, Copley SD. 2014. A versatile and highly efficient method for scarless genome editing in *Escherichia coli* and *Salmonella enterica*. *BMC Biotechnol* 14:84. <https://doi.org/10.1186/1472-6750-14-84>.
  57. Lee SC, Wang W, Liu P. 2009. Construction of gene-targeting vectors by recombineering. *Methods Mol Biol* 530:15–27. [https://doi.org/10.1007/978-1-59745-471-1\\_2](https://doi.org/10.1007/978-1-59745-471-1_2).
  58. Lee DJ, Bingle LE, Heurlier K, Pallen MJ, Penn CW, Busby SJ, Hobman JL. 2009. Gene doctoring: a method for recombineering in laboratory and pathogenic *Escherichia coli* strains. *BMC Microbiol* 9:252. <https://doi.org/10.1186/1471-2180-9-252>.
  59. Zampieri M, Enke T, Chubukov V, Ricci V, Piddock L, Sauer U. 2017. Metabolic constraints on the evolution of antibiotic resistance. *Mol Syst Biol* 13:917. <https://doi.org/10.15252/msb.20167028>.
  60. EUCAST. 2000. EUCAST definitive document E.DEF 3.1, June 2000: de-termination of minimum inhibitory concentrations (MICs) of antibacterial agents by agar dilution. *Clin Microbiol Infect* 6:509–515.
  61. Coldham NG, Webber M, Woodward MJ, Piddock LJ. 2010. A 96-well plate fluorescence assay for assessment of cellular permeability and active efflux in *Salmonella enterica* serovar Typhimurium and *Escherichia coli*. *J Antimicrob Chemother* 65:1655–1663. <https://doi.org/10.1093/jac/dkq169>.
  62. Blair JM, La Ragione RM, Woodward MJ, Piddock LJ. 2009. Periplasmic adaptor protein *AcrA* has a distinct role in the antibiotic resistance and virulence of *Salmonella enterica* serovar Typhimurium. *J Antimicrob Chemother* 64:965–972. <https://doi.org/10.1093/jac/dkp311>.
  63. Buckner MM, Blair JM, La Ragione RM, Newcombe J, Dwyer DJ, Ivens A, Piddock LJ. 2016. Beyond antimicrobial resistance: evidence for a distinct role of the *AcrD* efflux pump in *salmonella* biology. *mBio* 7:e01916-16. <https://doi.org/10.1128/mBio.01916-16>.
  64. Hornsey M, Wareham DW. 2011. *In vivo* efficacy of glycopeptide-colistin combination therapies in a *Galleria mellonella* model of *Acinetobacter baumannii* infection. *Antimicrob Agents Chemother* 55:3534–3537. <https://doi.org/10.1128/AAC.00230-11>.
  65. Tsai CJ, Loh JM, Proft T. 2016. *Galleria mellonella* infection models for the study of bacterial diseases and for antimicrobial drug testing. *Virulence* 7:214–229. <https://doi.org/10.1080/21505594.2015.1135289>.
  66. Kingsley RA, Humphries AD, Weening EH, De Zoete MR, Winter S, Papaconstantinopoulou A, Dougan G, Bäumlér AJ. 2003. Molecular and phenotypic analysis of the CS54 island of *Salmonella enterica* serotype Typhimurium: identification of intestinal colonization and persistence determinants. *Infect Immun* 71:629–640. <https://doi.org/10.1128/IAI.71.2.629-640.2003>.
  67. Gil-Cruz C, Bobat S, Marshall JL, Kingsley RA, Ross EA, Henderson IR, Leyton DL, Coughlan RE, Khan M, Jensen KT, Buckley CD, Dougan G, MacLennan IC, López-Macías C, Cunningham AF. 2009. The porin *OmpD* from nontyphoidal *Salmonella* is a key target for a protective  $\beta$ 1b cell antibody response. *Proc Natl Acad Sci U S A* 106:9803–9808. <https://doi.org/10.1073/pnas.0812431106>.
  68. Richmond GE, Evans LP, Anderson MJ, Wand ME, Bonney LC, Ivens A, Chua KL, Webber MA, Sutton JM, Peterson ML, Piddock LJ. 2016. The *Acinetobacter baumannii* two-component system *AdeRS* regulates genes required for multidrug efflux, biofilm formation, and virulence in a strain-specific manner. *mBio* 7:e00430-16. <https://doi.org/10.1128/mBio.00430-16>.