



THE UNIVERSITY *of* EDINBURGH

Edinburgh Research Explorer

## Data for analysis of catechol estrogen metabolites in human plasma by liquid chromatography tandem mass spectrometry

### Citation for published version:

Andrew, R, Khan, S, Stasinopoulos, I, Church, C, Homer, N & McLean, M 2019, 'Data for analysis of catechol estrogen metabolites in human plasma by liquid chromatography tandem mass spectrometry' Data in brief. DOI: 10.1016/j.dib.2019.103740

### Digital Object Identifier (DOI):

[10.1016/j.dib.2019.103740](https://doi.org/10.1016/j.dib.2019.103740)

### Link:

[Link to publication record in Edinburgh Research Explorer](#)

### Document Version:

Version created as part of publication process; publisher's layout; not normally made publicly available

### Published In:

Data in brief

### General rights

Copyright for the publications made accessible via the Edinburgh Research Explorer is retained by the author(s) and / or other copyright owners and it is a condition of accessing these publications that users recognise and abide by the legal requirements associated with these rights.

### Take down policy

The University of Edinburgh has made every reasonable effort to ensure that Edinburgh Research Explorer content complies with UK legislation. If you believe that the public display of this file breaches copyright please contact [openaccess@ed.ac.uk](mailto:openaccess@ed.ac.uk) providing details, and we will remove access to the work immediately and investigate your claim.



Data in brief xxx (xxxx) xxx



ELSEVIER

Contents lists available at ScienceDirect

## Data in brief

journal homepage: [www.elsevier.com/locate/dib](http://www.elsevier.com/locate/dib)

## Data Article

# Data for analysis of catechol estrogen metabolites in human plasma by liquid chromatography tandem mass spectrometry

Nina Denver<sup>a, b</sup>, Shazia Khan<sup>a</sup>, Ioannis Stasinopoulos<sup>a</sup>,  
Colin Church<sup>c</sup>, Natalie Z.M. Homer<sup>a</sup>, Margaret R. MacLean<sup>b</sup>,  
Ruth Andrew<sup>a, \*</sup>

<sup>a</sup> Mass Spectrometry Core, Edinburgh Clinical Research Facility, Queen's Medical Research Institute, 47 Little France Crescent, Edinburgh, EH16 4TJ, United Kingdom

<sup>b</sup> Institute of Cardiovascular and Medical Sciences, College of Medical, Veterinary and Life Sciences, University of Glasgow, University Avenue, Glasgow, G12 8QQ, United Kingdom

<sup>c</sup> Scottish Pulmonary Vascular Unit, Golden Jubilee National Hospital, Agamemnon St, Clydebank, G81 4DY, United Kingdom

## ARTICLE INFO

## Article history:

Received 20 December 2018

Received in revised form 31 January 2019

Accepted 1 February 2019

Available online xxx

## ABSTRACT

Analysis of catechol estrogens (2 & 4 hydroxy-estrone and estradiol) has proven troublesome by liquid chromatography tandem mass spectrometry due to their low concentrations, short half-lives and temperature-labile nature. Derivatization to methyl piperazine analogues has been reported for a panel of 9 estrogens in, "Derivatization enhances analysis of estrogens and their bioactive metabolites in human plasma by liquid chromatography tandem mass spectrometry" [1]. Data show alteration of the base catalyst in this method was required to allow detection of catechol estrogens to low levels. Data also highlight the challenges faced in chromatographic separation of isomers and isotopologues, which were overcome by employing an extended column length and reduced oven temperature. In addition, data analysis displayed significant matrix effects during quantitation in plasma, following solid-phase extraction, despite efficient recoveries.

© 2019 The Author(s). Published by Elsevier Inc. This is an open access article under the CC BY license (<http://creativecommons.org/licenses/by/4.0/>).

\* Corresponding author.

E-mail addresses: [n.denver.1@research.gla.ac.uk](mailto:n.denver.1@research.gla.ac.uk) (N. Denver), [Shazia.Khan@ed.ac.uk](mailto:Shazia.Khan@ed.ac.uk) (S. Khan), [s1474874@sms.ed.ac.uk](mailto:s1474874@sms.ed.ac.uk) (I. Stasinopoulos), [colinchurch@nhs.net](mailto:colinchurch@nhs.net) (C. Church), [n.z.m.homer@ed.ac.uk](mailto:n.z.m.homer@ed.ac.uk) (N.Z.M. Homer), [Mandy.MacLean@glasgow.ac.uk](mailto:Mandy.MacLean@glasgow.ac.uk) (M.R. MacLean), [ruth.andrew@ed.ac.uk](mailto:ruth.andrew@ed.ac.uk) (R. Andrew).

<https://doi.org/10.1016/j.dib.2019.103740>

2352-3409/© 2019 The Author(s). Published by Elsevier Inc. This is an open access article under the CC BY license (<http://creativecommons.org/licenses/by/4.0/>).

Please cite this article as: N. Denver et al., Data for analysis of catechol estrogen metabolites in human plasma by liquid chromatography tandem mass spectrometry, Data in brief, <https://doi.org/10.1016/j.dib.2019.103740>

## Specifications table

Subject area	Chemistry
More specific subject area	Analytical, Bioanalytical and Clinical Chemistry
Type of data	Tables, figure
How data was acquired	Liquid Chromatography, Mass Spectrometry (LC-MS/MS)
Data format	Analyzed Data
Experimental factors	Experiments for extraction of catechol estrogens from plasma for LC-MS/MS analysis
Experimental features	Development of quantitative approach for catechol estrogens (2OHE1, 4OHE1, 2OHE2 and 4OHE2).
Data source location	Scottish Pulmonary Vascular unit, Golden Jubilee National Hospital, Agamemnon St, Clydebank, Glasgow, G814DY
Data accessibility	Data in the article
Related research article	N. Denver, S. Khan, I. Stasinopoulos, C. Church, N.Z. Homer, M.R. MacLean, R. Andrew, Derivatization enhances analysis of estrogens and their bioactive metabolites in human plasma by liquid chromatography tandem mass spectrometry, <i>Anal. Chim. Acta.</i> 1054 (2019) 84–94.

**Value of the data**

- Illustrates a common problem faced in quantitative estrogen metabolite assays for catechol estrogens
- LC-MS/MS parameters are reported for identification and resolution of catechol metabolites
- The derivatization method allows analyte detection to 20 pg mL<sup>-1</sup> in aqueous solutions
- Recovery and ion suppression data for researchers considering solid phase extraction of these analytes

**1. Data**

Here we display data in Table 1, which illustrates the mass spectrometry tuning parameters of MPPZ-derivatives of catechol estrogens, showing by their exact theoretical and observed masses. In Table 2, data demonstrating the limit of detection that can be achieved for analytes following derivatization efficiency are given for unextracted standards, alongside observed retention times from chromatographic interpretation, Fig. 1. Finally, the recoveries of catechol estrogens from plasma following solid-phase extraction are displayed in Table 2, with associated data describing matrix effect.

Catechol estrogens (2 and 4-hydroxy-estrogens) are challenging metabolites to analyze by LC-MS/MS [2,3]. Common analytical challenges arise due to their unstable nature and short half-lives [4]. Derivatization with 1-(5-fluoro-2, 4-dinitrophenyl)-4,4-dimethylpiperazine (MPPZ) has been successfully applied for analysis of estradiol, estrone, 16-hydroxy and 2 and 4 methoxyestrogens [1]. Here the successes and pitfalls of applying this approach to analyse catechol estrogens are described. For 2 & 4-hydroxyestrogens, MPPZ derivatives were generated with the original protocol [1] but with poor yield, with insufficient detection upon lowering the concentrations (<500 pg mL<sup>-1</sup>). Comparison of various derivatization base catalysts (sodium bicarbonate, trimethylamine, pyridine, ammonium hydroxide and *N*-diethylaniline) was key in achieving efficient derivatization. Modification of the base catalyst to *N*-diethylaniline enhanced PPZ derivatization with catechol estrogens, showing ×500 increase in peak area response, but this approach caused reduction of signals of the 9 other estrogens (E1, E2, 16OHE and MeOE) within this sex steroid pathway. Combinations of base catalysts were also tested to create a holistic approach. However, derivatization of the catechol metabolites and additional 9 estrogens were only successful in separate reactions.

Structural identification of precursor and product ions for the catechol derivatives were achieved by high resolution MS and multiple reaction monitoring for quantitation established by triple quadrupole MS, Table 1.

Double derivatives of these compounds were not seen, but isomeric mono-derivatives were observed, believed due to the possibility of either of the A-ring hydroxyl groups reacting. To achieve the highest degree of chromatographic resolution of isomers and isotopologues, a C18\_PFP (2.1 × 150mm)

**Table 1****Q3** Mass spectrometric analysis of MPPZ derivatized catechol estrogens.

Analyte-MPPZ	Accurate mass precursor ion $m/z$	Theoretical product ion mass	Observed product ion mass $m/z$	Product ion $\Delta$ ppm	Collision energy (V)	Collision exit cell potential (V)	De-clustering potential (V)
2OHE1	565.2662	a251.1269	a251.1276	2.78	59.0	10.0	130.0
		b58.0656	b58.0651	8.61	129.0	10.0	130.0
4OHE1	565.2662	a251.1269	a251.1274	0.39	59.0	10.0	130.0
		b58.0656	b58.0673	29.27 <sup>a</sup>	129.0	10.0	130.0
2OHE2	567.2819	a251.1269	a251.1274	1.99	61.0	22.0	166.0
		b281.1249	b281.1252	1.06	61.0	22.0	166.0
4OHE2	567.2819	a251.1269	a251.1265	1.59	61.0	22.0	166.0
		b281.1249	b281.1251	0.71	61.0	22.0	166.0
<sup>13</sup> C <sub>6</sub> -4OHE1	571.2864	a251.1269	a251.1268	0.39	50.0	15.0	136.0
		b58.0656	b58.0661	1.72	100.0	15.0	136.0
<sup>13</sup> C <sub>6</sub> -2OHE2	573.3020	a251.1269	a251.1269	0.00	50.0	15.0	136.0
		b281.1249	b281.1251	0.71	50.0	15.0	136.0

<sup>a</sup> Fragments with low signal intensity following infusion generated higher ppm values; Entrance potential = 10V; mass to charge ( $m/z$ ); Mass error ( $\Delta$ ppm); Voltage (V); 2-hydroxyestrone (2 OHE1); 4-hydroxyestrone (4 OHE1); 2-hydroxyestradiol (2 OHE2); 4-hydroxyestradiol (4 OHE2); 13,14,15,16,17,18-<sup>13</sup>C<sub>6</sub>-4-hydroxyestrone (<sup>13</sup>C<sub>6</sub>-4OHE1); 13,14,15,16,17,18-<sup>13</sup>C<sub>6</sub>-2-hydroxyestradiol (<sup>13</sup>C<sub>6</sub>-2OHE2); MPPZ, 1-(2, 4-dinitrophenyl)-4,4-dimethylpiperazine.

was coupled to a C18\_PFP (2.1 × 20mm). The reduction of oven temperature from 25 to 20 °C also aided in resolving the catechol estrogen derivative peaks (Fig. 1).

Data illustrated that recovery of catechol estrogens (pre vs post-spiked PA) from Oasis MCX cartridges, Table 2 was acceptable (2OHE1 73%, 4OHE1 66%, 2OHE2 68% & 4OHE 64%). However, unfortunately significant ion suppression (unextracted peak area vs extract + derivatized estrogen peak area) was present for all catechol metabolites recovered from plasma (2OHE1 by 94%, 4OHE1 96.1%, 2OHE2 94.7% & 4OHE2 96.5%), Table 2. Additional clean up steps utilizing aqueous methanol or acetonitrile (0–70% v/v) improved ion suppression but not to an acceptable degree; the least ion suppression was observed with washes of 60%v/v MeOH (ion suppression: 2OHE1 by 80.5%, 4OHE1 78.9%, 2OHE2 79.9% & 4OHE2 79.7%) and 30% ACN (2OHE1 by 80%, 4OHE1 88%, 2OHE2 77% & 4OHE2 86%). Further modification of elution solvent (70–100% v/v MeOH) did not decrease ion suppression sufficiently with the optimal wash of 95% v/v MeOH still showing suppression of ~80% (2OHE1 85%, 4OHE1 95%, 2OHE2 78% & 4OHE2 71%). Thus, an alternative extraction protocol for use alongside the modified MPPZ derivatization protocol for 2, 4 hydroxy estrogens is required.

## 2. Experimental design, materials, and methods

### 2.1. Materials

2-Hydroxyestrone (2OHE1), 4-hydroxyestrone (4OHE1), 2-hydroxyestradiol (2OHE2), 4-hydroxyestradiol (4OHE2) were from Steraloids, Inc (Newport, USA). 13,14,15,16,17,18-<sup>13</sup>C<sub>6</sub>-4-

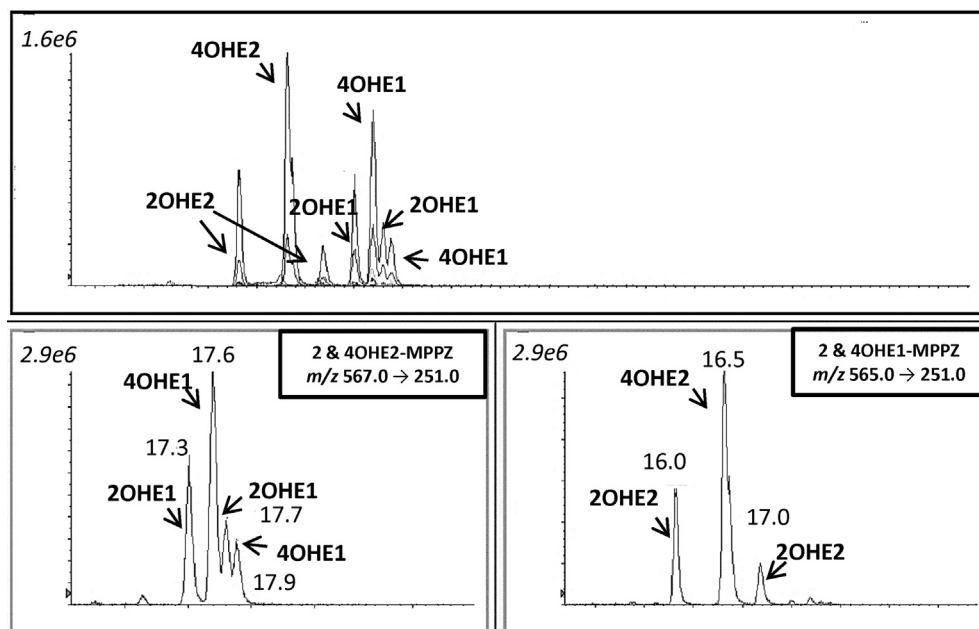
**Table 2**

Indices of extraction performance.

Analyte-MPPZ	Internal standard	Unextracted LOD (pg mL <sup>-1</sup> )	Retention time (s) (min)	MCX <sup>®</sup> recovery (%)	Generic IonSup (%)	Optimized IonSup (%)
2OHE1	<sup>13</sup> C <sub>6</sub> 4OHE1	20	17.38/17.75	72 ± 3	-94 ± 6	-72 ± 2
4OHE1	<sup>13</sup> C <sub>6</sub> 4OHE1	20	17.62/17.90	68 ± 2	-94 ± 2	-73 ± 4
2OHE2	<sup>13</sup> C <sub>6</sub> 2OHE2	20	16.03/17.00	69 ± 2	-93 ± 8	-69 ± 8
4OHE2	<sup>13</sup> C <sub>6</sub> 2OHE2	20	16.58	62 ± 4	-95 ± 9	-71 ± 6

2-hydroxyestrone (2 OHE1); 4-hydroxyestrone (4 OHE1); 2-hydroxyestradiol (2 OHE2); 4-hydroxyestradiol (4 OHE2); 13,14,15,16,17,18-<sup>13</sup>C<sub>6</sub>-4-hydroxyestrone (<sup>13</sup>C<sub>6</sub>-4OHE1); 13,14,15,16,17,18-<sup>13</sup>C<sub>6</sub>-2-hydroxyestradiol (<sup>13</sup>C<sub>6</sub>-2OHE2); MPPZ, 1-(2, 4-dinitrophenyl)-4,4-dimethylpiperazine; LOD, Limit of detection; min, minutes; MCX, Mixed Cation Exchange; IonSup, Ion Suppression.

Please cite this article as: N. Denver et al., Data for analysis of catechol estrogen metabolites in human plasma by liquid chromatography tandem mass spectrometry, Data in brief, <https://doi.org/10.1016/j.dib.2019.103740>



**Fig. 1.** Total and extracted ion chromatograms of methylpiperazine (MPPZ) derivatives of catechol estrogens, 2-Hydroxyestrone (2OHE1), 4-Hydroxyestrone (4OHE1), 2-Hydroxyestradiol (2OHE2) and 4-Hydroxyestradiol (4OHE2) at 1000  $\mu\text{g mL}^{-1}$ . Figure illustrating challenges in separating catechol metabolites by mass transitions and retention time (min).

Hydroxyestrone ( $^{13}\text{C}_6$ -4OHE1) and 13,14,15,16,17,18- $^{13}\text{C}_6$ -2-hydroxyestradiol ( $^{13}\text{C}_6$ -2OHE2) were from CK Isotopes Limited (Leicestershire, UK). *N*-diethylaniline was from Acros Organics (Geel, Belgium). All additional reagents were sourced as specified in Denver et al. [1].

## 2.2. Methods

Analysis, including assessment of extraction efficiency and ion suppression, was performed according to the approach described in Denver et al. [1] and modifications for catechol estrogens reported below.

### 2.2.1. Instrumentation

Structures of fragment ions formed from estrogen derivatives were determined by high resolution MS using a SYNAPT G2Si instrument (Waters Corp, Manchester, UK) fitted with an ESI source in positive mode [1]. Method development was performed using a Shimadzu Nexera X2 LC (Shimadzu, Kyoto, Japan) coupled to a Sciex 6500 + Mass Spectrometer (Sciex, Warrington, UK) operated in positive electrospray (ESI).

### 2.2.2. Chromatographic conditions

Estrogen metabolites were analyzed both individually and in a mixed solution to confirm separation. Two Ace Excel 2 C18-PFP column ( $150 \times 2.1 \text{ mm } 2 \mu\text{m} + 20 \times 2.1 \text{ mm } 2 \mu\text{m}$ ; HiChrom, Reading, England) were coupled at an oven temperature of  $20 \text{ }^\circ\text{C}$ . A gradient solvent system of water: acetonitrile (90:10), containing FA (0.1%, 0.5 mL/min) was diverted to waste for the initial 9 minutes followed by elution for a further 4 minutes at 90:10, then with a gradient over 3 minutes until final conditions of water: acetonitrile (90:10) containing FA (0.1%, 0.5 mL/min) were achieved. Injection volume was  $30 \mu\text{L}$ .

### 2.2.3. Derivatization and optimization

The following protocol was applied for derivatization PPZ stock (10  $\mu$ L; 1 mg mL<sup>-1</sup>), *N*-diethylaniline (10  $\mu$ L) and acetone (70  $\mu$ L) were added to the catechol estrogen standards and was capped and incubated (60 °C, 1 h). Reagents were reduced to dryness at 40 °C under oxygen free nitrogen (OFN). The dried residue was incubated (40 °C, 2 h) with CH<sub>3</sub>I (100  $\mu$ L). The mixture was reduced to dryness under OFN and dissolved in H<sub>2</sub>O/CH<sub>3</sub>CN (70:30; 70  $\mu$ L).

### 2.2.4. Extraction and optimization

Solid phase extraction (SPE) using Oasis<sup>®</sup> MCX (3 cc/60 mg, Waters, Wilmslow, UK) cartridges was applied under gravity. Prior to loading the sample, cartridges were conditioned and equilibrated with methanol (2 mL), followed by water (2 mL). The diluted sample (0.5 mL plasma + 0.5 mL water (or 1 mL water for standards) + 200 pg mL<sup>-1</sup> Internal Standard) was loaded and allowed to pass through the cartridges and the eluate discarded. The cartridges were washed with aqueous FA (2% v/v, 2 mL). A second wash of MeOH (60% v/v, 2 mL) was applied with the eluate discarded. Steroids were eluted in MeOH (95%; 2 mL). Extracts were reduced to dryness under OFN (40 °C) and the residues were derivatized as above.

## Acknowledgments

We would like to thank the BBSRC iCASE award (BB/N503691/1) for PhD funding and to the Graham Wilson Travel Scholarship for their award to fund commuting costs for two years of the project. We would also like to thank the Wellcome Trust (202794/Z/16/Z) and The BHF (PG/15/63/31659) for funding. We are also grateful to the staff of the Mass Spectrometry Core, Edinburgh Clinical Research Facility for expert scientific help.

## Transparency document

Transparency document associated with this article can be found in the online version at <https://doi.org/10.1016/j.dib.2019.103740>.

## References

- [1] N. Denver, S. Khan, I. Stasinopoulos, C. Church, N.Z. Homer, M.R. MacLean, R. Andrew, Derivatization enhances analysis of estrogens and their bioactive metabolites in human plasma by liquid chromatography tandem mass spectrometry, *Anal. Chim. Acta* 1054 (2019) 84–94.
- [2] N.J. Maclusky, F. Naftolin, L.C. Krey, S. Franks, The catechol estrogens, *J. Steroid Biochem.* 15 (1981) 111–124.
- [3] C. Mesaros, Q. Wang, I.A. Blair, What are the main considerations for bioanalysis of estrogens and androgens in plasma and serum samples from postmenopausal women? *Bioanalysis* 6 (2014) 3073–3075.
- [4] A.A. Franke, L.J. Custer, Y. Morimoto, F.J. Nordt, G. Maskarinec, Analysis of urinary estrogens, their oxidized metabolites, and other endogenous steroids by benchtop orbitrap LCMS versus traditional quadrupole GCMS, *Anal. Bioanal. Chem.* 401 (2011) 1319–1330.